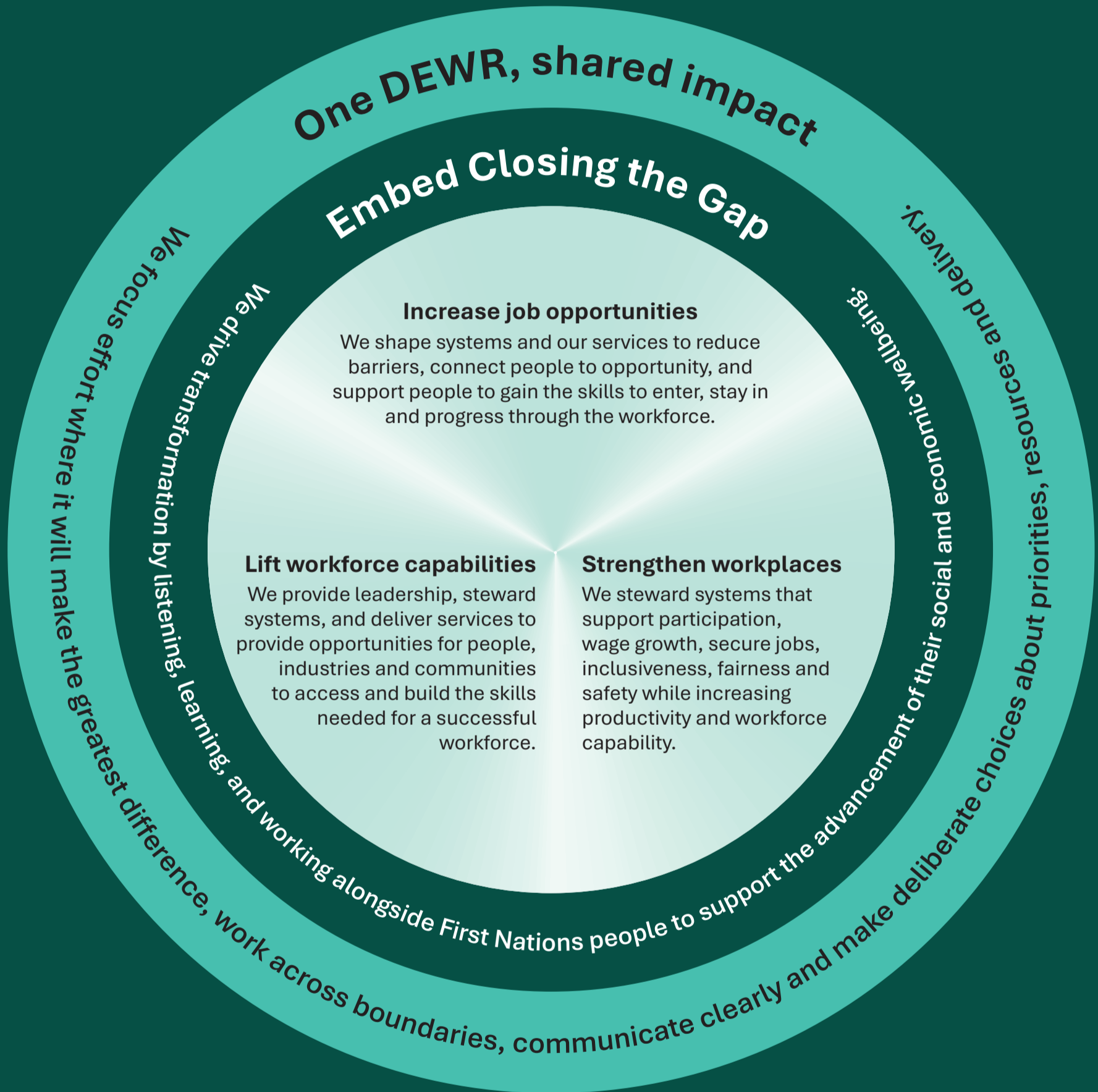




Supporting job opportunities. Strengthening workplaces.



Impactful

We focus effort on work that matters, make evidence-informed choices and follow through on outcomes.



Courageous

We speak up with honesty and respect, challenge constructively and make clear decisions when they are needed.



Collaborative

We work as one DEWR and with others, sharing expertise, listening early and taking responsibility for shared outcomes.



Curious

We stay open, ask questions, listen to different perspectives and use evidence to innovate.



Inclusive

We create space for different voices, value lived experience and ensure decisions are informed by the people they affect.