



Australian Government

# VET **Student** Loans

## Six-monthly report

1 July 2017 to 31 December 2017

## Introduction

This report is provided in accordance with section 103A of the *VET Student Loans Act 2016* (Act), which requires that:

*The Secretary must publish the following information within 42 days after the end of the period of 6 months beginning on 1 January and 1 July in each year (the reporting period):*

- a) the number of approved course providers who operated during the reporting period;*
- b) for each of those providers:*
  - i) the name of the provider; and*
  - ii) the value of VET student loans approved by the Secretary for approved courses offered by the provider during the reporting period; and*
  - iii) the number of students who undertook approved courses offered by the provider during the reporting period and whose tuition fees for the courses were paid (whether in whole or in part) using VET student loans; and*
  - iv) the number of such students who completed approved courses during the reporting period; and*
  - v) the amount of tuition fees charged to such students by the provider during the reporting period;*
- c) any other information in relation to VET student loans prescribed under the rules.*

This report covers the period from 1 July 2017 to 31 December 2017 (the “reporting period”).

Consistent with section 103A, the report focuses on students whose tuition fees were paid (whether in whole or in part) using a VET Student Loan (VSL) within the reporting period. This report refers to these students as **VSL-assisted students**.

Information relating to students who have not accessed a VET Student Loan (or non-VSL-assisted students) is not included in this report.

Note that, as this report only focusses on students who have accessed a VET Student Loan during the period 1 July 2017 to 31 December 2017, the results cannot be combined with the VET Student Loans Six-monthly report 1 January 2017 to 31 December 2017 to give annual results. Annual results for 2017 will be presented in another publication.

## Background: The VET Student Loans program

The VET Student Loans program commenced on 1 January 2017, replacing the VET FEE-HELP scheme which closed to new students on 31 December 2016.

This delivered on the Government's commitment to redesign the VET income contingent loans program so that it is student centred, delivers high quality training, is fiscally sustainable, and holds providers to account. The new program focuses on program integrity, manages risk and promotes confidence in the regulated VET market by ensuring students are both academically suited to their course and are studying under a quality provider.

VET Student Loans offers income contingent loan support to eligible students studying approved Diploma level and above vocational education and training qualifications. Eligible students are entitled to access loans up to a capped amount of either \$5,000, \$10,000 or \$15,000 based on cost of delivery, though the Minister has the power to provide different (and higher) caps for particular courses (for example, aviation related courses).

The list of current VET Student Loans approved courses and maximum loan amount by course is available in the *VET Student Loans (Courses and Loan Caps) Determination 2016*<sup>1</sup>.

## Context: Commencement of the full VET Student Loans program

The six-month period covered in this report represents the first six months during which approved course providers operated with full approval under the VET Students Loans program.

Under the transitional arrangements that applied during the previous six months approved course providers had been given approval only until 30 June 2017.

To be fully approved, registered training organisations had to submit an application, with successful applicants being given full approval for periods of between two and a half and seven years (the maximum allowed<sup>2</sup>) commencing on 1 July 2017.

During the period from 1 July 2017 to 31 December 2017, 144 providers operated as approved course providers under the VET Student Loans program. This is down from the 167 providers under the transitional arrangements in the first half of 2017 (as detailed in the *VET Student Loans Six-monthly report 1 January 2017 to 30 June 2017*<sup>3</sup>).

The small decrease in the number of providers reflects the outcome of the first application round for full approval, during which applicants were comprehensively assessed against the course provider requirements in the *VET Student Loans Act 2016* and *VET Student Loans Rules 2016*.

---

<sup>1</sup> <https://www.legislation.gov.au/Details/F2017C00493>

<sup>2</sup> Section 29, *VET Student Loans Act 2016*, <https://www.legislation.gov.au/Series/C2016A00098>

<sup>3</sup> <https://www.education.gov.au/vet-student-loans-statistics>

## Information required under section 103A of the *VET Student Loans Act 2016*

During the period 1 July 2017 to 31 December 2017 a total of 144 registered training organisations (RTOs) operated as approved course providers for VET Student Loans (section 103A(a)). Table 1 in the Appendix to this report sets out all of the information required by section 103A(b) for each provider.

In addition, this report sets out information and commentary on highlights for each of the matters specified in section 103A(b) for the six-month period, namely:

- Approved course providers
- The value of VET Student Loans
- VSL-assisted students
- Completions
- Tuition fees.

### Approved course providers (sections 103A(a) and (b)(i))

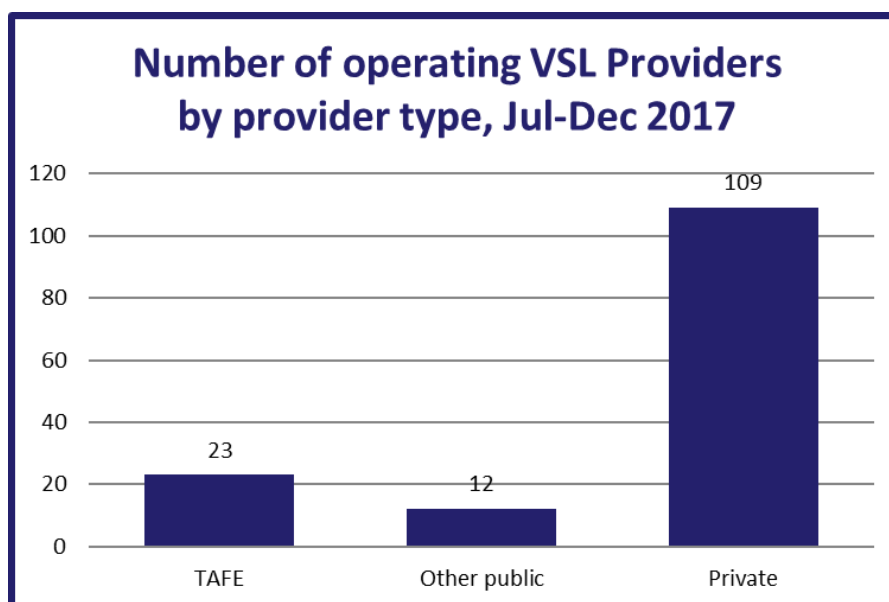
Of the 144 approved course providers that operated during the 1 July 2017 to 31 December 2017 reporting period, 123 were previously approved as VET FEE-HELP providers.

The 144 approved course providers comprised:

- 23 TAFEs
- 12 other public organisations (including Table A providers), and
- 109 private providers.

The numbers of providers in these different categories is shown in Figure 1.

**Figure 1: Approved course providers by type, 1 July 2017 to 31 December 2017**



The names of each of the 144 approved course providers that operated during the reporting period are provided in Table 1.

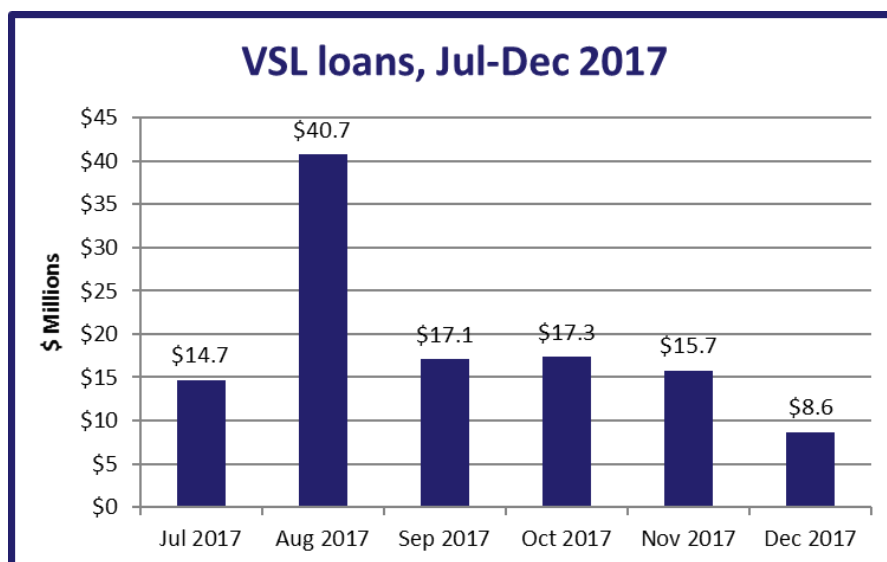
Of the 144 approved course providers that operated during the reporting period, 119 had students who accessed a VET Student Loan during that period.

## Value of VET Student Loans (section 103A(b)(ii))

The amount paid to approved course providers in respect of VET Student Loans approved for students studying eligible courses, for the reporting period, was \$114,147,477. A breakdown by approved course provider is provided in Table 1.

Figure 2 shows the value of VET Student Loans paid for study undertaken during each month<sup>4</sup>.

**Figure 2: Value of VET Student Loans paid for study undertaken in each month, 1 July 2017 to 31 December 2017**

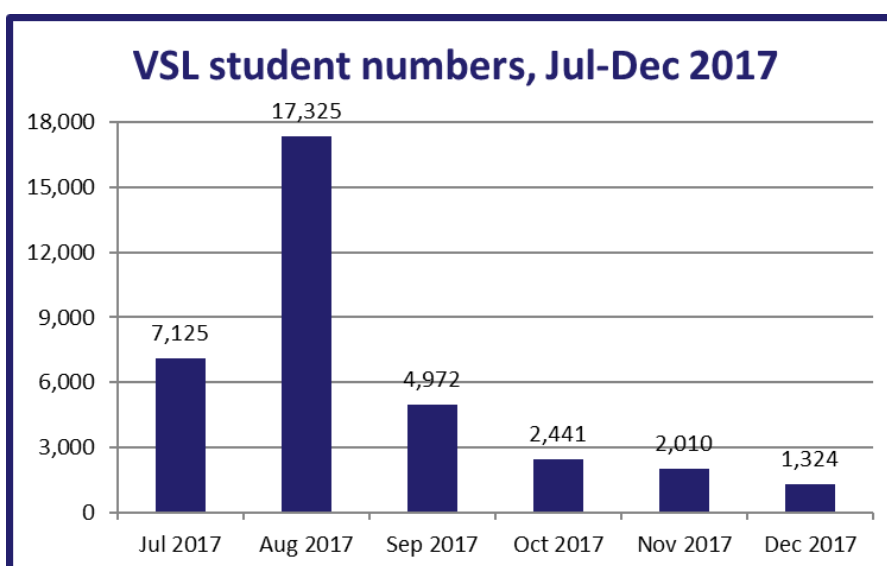


## VSL-assisted students (section 103A(b)(iii))

A total of 35,197 students undertook a part of a course with a census day during the reporting period, where the part of the course being studied was VSL-assisted (Table 1).

Figure 3 shows, by month, when these 35,197 students had their first part of the course that was VSL-assisted *in the reporting period*.

**Figure 3: VSL-assisted student numbers, first time VSL-assisted during the period 1 July 2017 to 31 December 2017**



<sup>4</sup> Study undertaken during each month is defined as a part of the course where the census day is in that month, regardless of when payment was made.

Monthly student numbers peaked in August 2017, commensurate with the peak in VSL payments. It should be noted that some students may have had a VSL-assisted unit of study in more than one month. This would occur, for example, if they accessed a VET Student Loan for more than one part of a course, or for more than one course. These students are represented only the first time they accessed a VET Student Loan.

A breakdown of students by provider is shown in Table 1. However, the total of 35,197 only counts each student once, regardless of how many providers they were studying at.

## Completions (section 103A(b)(iv))

A relatively small number of students (6,302) are recorded as having completed a course based on data reported for the six months to 31 December 2017, as shown in Table 1. This is due to the following factors:

- this report only covers students who have paid for study reported within the six-month reporting period with a VET Student Loan
- 360 (94 per cent) of the 384 courses on the VET Student Loans (Courses and Loan Caps) Determination 2016, for the reporting period, were at either the Diploma or Advanced Diploma level, which typically have lengths of one to two years<sup>5</sup>
- 34 per cent of courses undertaken during the reporting period were studied on a part-time basis.

Thus, most VSL-assisted students reported as having studied in the reporting period, would not have had time to complete their course by 31 December 2017. For this reason, this report also includes information on unit of study completion rates in Table 1.

A course consists of a number of units of study (referred to as “parts of the course” in the *VET Student Loans Rules 2016*). Thus, reporting on unit of study completion rates provides an alternative way of presenting information on students’ progression through their courses at this early stage of the program.

The unit of study completion rate is the proportion of units of study that were passed, of the total units of study undertaken, with units of study measured in Equivalent Full Time Student Load (EFTSL) rather than student numbers. Units of study undertaken are units that providers have reported as being withdrawn from, failed or successfully completed, as well as units for which providers have failed to report a completion status.

The overall unit of study completion rate for VSL-assisted students is 81.4 per cent for the July to December reporting period. This represents an increase from the unit of study completion rate of 75.2 per cent reported in the *VET Student Loans Six-monthly report 1 January 2017 to 30 June 2017*. Given that at the time this report was produced, many units of study were still in progress, a recalculation of the VSL-assisted unit of study completion rate at a later point in time may provide results different from those provided in Table 1<sup>6</sup>.

Figure 4 shows a histogram of unit of study completion rates for the reporting period. Of the 119 VSL providers that had students who accessed a VET Student Loan in the reporting period, 9 (8 per cent) had a unit of study completion rate of zero, with 68 (57 per cent) having unit of study completion

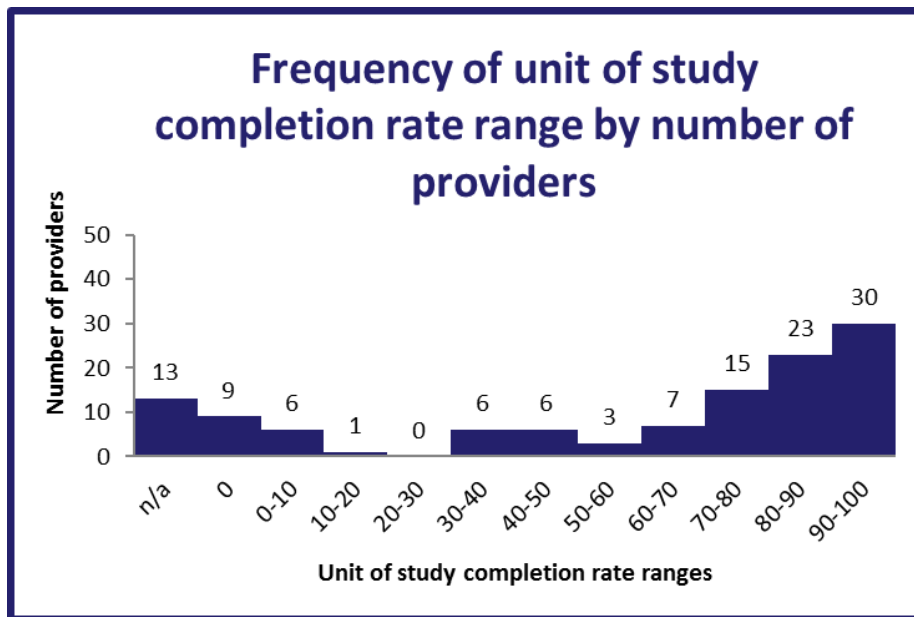
---

<sup>5</sup> Australian Qualifications Framework Second Edition January 2013, <https://www.aqf.edu.au/sites/aqf/files/aqf-2nd-edition-january-2013.pdf>

<sup>6</sup> Units reported as still in progress are excluded from the unit of study completion rate calculation. Providers report the final completion status of such units once completed (successfully or otherwise). A unit of study will generally include multiple units of competency (subjects). Unit of study completion rates therefore cannot be compared to subject load pass rates published by the National Centre for Vocational Education Research.

rates above 70 per cent. A unit of study completion rate could not be calculated for 13 providers (11 per cent) that reported all of their students' units of study as being still in progress.

**Figure 4: Histogram of VSL-assisted student unit of study completion rates, 1 July 2017 to 31 December 2017**



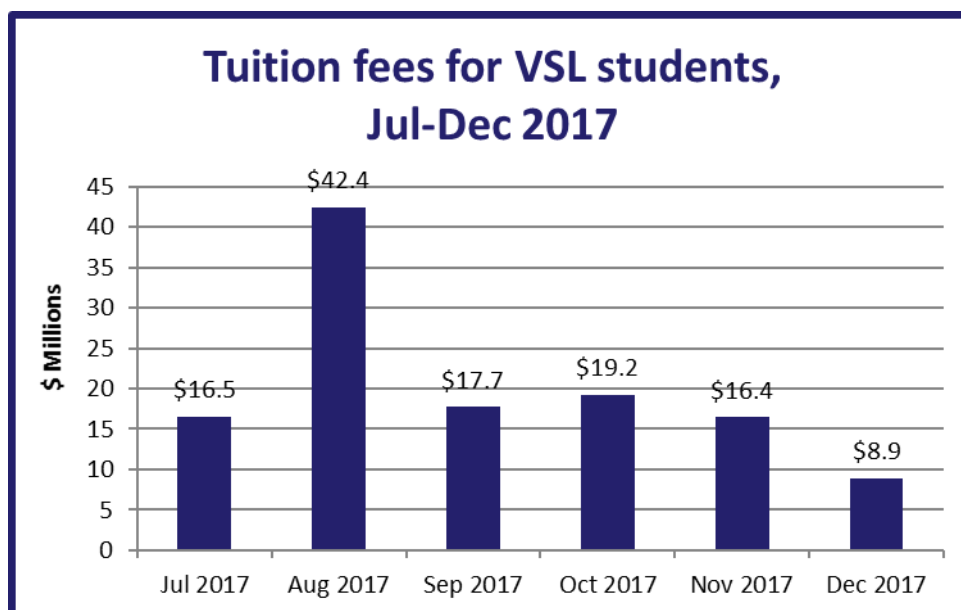
### Tuition fees (section 103A(b)(v))

During the reporting period, VSL-assisted students were charged a total of \$121,216,416 in course tuition fees. VSL-assisted students paid \$7,037,531 of their tuition fees up front in addition to the amounts paid in VET Student Loans.

Figure 5 provides a breakdown of tuition fees charged to VSL-assisted students in the reporting period, by month.

Tuition fees charged peaked in August 2017, commensurate with the peaks in value of loans paid for study undertaken and student numbers.

**Figure 5: Tuition fees charged to VSL-assisted students by month, 1 July 2017 to 31 December 2017**



## Additional VET student loan provider and course information

Tables 2 to 5 in the Appendix, and Table 6, an additional table provided as a separate Excel spreadsheet, provide additional information on approved course providers and the eligible courses they offered during the reporting period.

In particular, these tables rank providers in order of VSL-assisted students (Table 2), value of VET Student Loans paid (Table 3), and rank courses in order of VSL-assisted students (Table 4) and in order of value of VET Student Loans paid (Table 5).

These tables also provide the following:

- VSL-assisted student numbers (Table 2 and 3)
- course enrolment numbers<sup>7</sup> (Tables 4 and 5)
- Equivalent Full-Time Student Load (EFTSL) by provider and by course
- tuition fees charged
- the amount of the tuition fees paid up-front (paid directly to the provider by the student, rather than deferred through a VSL loan)
- the value of VSL loans
- tuition fees per student (Tables 2 and 3)
- tuition fees per course enrolment (Tables 4 and 5)
- tuition fees per EFTSL
- loan amount per student (Tables 2 and 3)
- loan amount per course enrolment (Tables 4 and 5)
- loan amount per EFTSL
- enrolments, loans, tuition fees, students completing courses and unit of study completion rates by provider and course (Table 6).

Nine of the top 10 providers ranked by value of loans paid in Table 3 were public providers (TAFEs/Table A universities). Nine of the top 10 are the same providers as those reported in the VET Student Loans Six-monthly report 1 January 2017 to 30 June 2017, with Holmesglen Institute of TAFE and TAFE SA swapping 9<sup>th</sup> and 11<sup>th</sup> positions.

In terms of student numbers, all of the top ten providers were public providers (Table 2). This is the same 10 providers as those reported in the VET Student Loans Six-monthly report 1 January 2017 to 30 June 2017, with a slight change in rankings, though the top three providers are consistent.

Nine of the top 10 courses, in terms of student numbers from the first half of 2017 remain in the top ten, with the Diploma of Visual Arts dropping to 12<sup>th</sup> position and the Diploma of Accounting moving up from 11<sup>th</sup> to 8<sup>th</sup> place. The Diploma of Nursing is the highest ranking course both in terms of course enrolments and value of loans paid, as shown in Tables 4 and 5, respectively. Nursing and community services qualifications are popular with VSL-assisted students, as they were under VET FEE-HELP.

Consistent with the first half of 2017, the Diploma of Business (now 7<sup>th</sup> in terms of course enrolment numbers) is no longer the most popular course as it was under VET FEE-HELP.

The Diploma of Leadership and Management's relative popularity has also fallen from the 4<sup>th</sup> most popular course under VET FEE-HELP in 2016 to 18<sup>th</sup> under VSL in 2017.

Moving up the ladder is the Diploma of Screen and Media, which did not rank in the top ten courses in 2016 under VET FEE-HELP, but is now ranked 4<sup>th</sup> in terms of student numbers and 3<sup>rd</sup> in value of loans paid.

---

<sup>7</sup> Students can enrol in more than one course, so enrolment numbers will always be greater than or equal to student numbers.



## Appendix: List of Tables

- **Table 1:** VET Student Loans information relating to operation of the VET Student Loans program for the period 1 July 2017 to 31 December 2017 - Section 103A of VET Student Loans Act 2016
- **Table 2:** VSL providers ordered by VSL-assisted student numbers for the period 1 July 2017 to 31 December 2017
- **Table 3:** VSL providers ordered by value of VSL loans paid for the period 1 July 2017 to 31 December 2017
- **Table 4:** VSL courses ordered by VSL-assisted enrolments for the period 1 July 2017 to 31 December 2017
- **Table 5:** VSL courses ordered by VSL loans paid for the period 1 July 2017 to 31 December 2017
- **Table 6:** VSL provider course details for the period 1 July 2017 to 31 December 2017 (separate table in excel spreadsheet)

**Table 1: VET Student Loans information relating to operation of the VET Student Loans program for the period 1 July 2017 to 31 December 2017 - Section 103A of VET Student Loans Act 2016**

	Provider ID	Provider name 103A (b)(i)	Provider type	Students undertaking approved courses 103A (b)(iii)	Loans paid 103A (b)(ii)	Tuition fees charged 103A (b)(v)	Students completing approved courses 103A (b)(iv)	Unit of study completion rate (%)
1	7725	Aboriginal Centre for the Performing Arts Pty Ltd	Private	0	\$0	\$0	0	n/a
2	7583	Absorb Training Pty Ltd	Private	0	\$0	\$0	0	n/a
3	7124	Academy of Information Technology Pty Ltd	Private	109	\$263,220	\$402,490	0	100.0
4	4411	Acknowledge Education Pty Ltd	Private	0	\$0	\$0	0	n/a
5	7407	Air Gold Coast Pty. Ltd.	Private	25	\$544,361	\$544,361	2	97.7
6	4407	Alphacrucis College Limited	Private	25	\$99,115	\$99,115	7	100.0
7	7819	Atkinson Training and Development Pty Limited	Private	10	\$19,966	\$19,966	0	n/a
8	7701	Aurora Training Institute Pty Ltd as trustee for the Aurora Trust	Private	30	\$65,539	\$65,539	8	87.0
9	7541	Australasian Beauty Therapy Academy Pty Ltd	Private	47	\$172,800	\$172,800	0	96.3
10	7345	Australia Moreton Education Group Pty Ltd	Private	0	\$0	\$0	0	n/a
11	7108	Australian Academy of Vocational Education and Trades Pty Ltd	Private	6	\$25,284	\$25,284	0	63.6
12	7092	Australian Careers Business College Pty Ltd	Private	154	\$415,323	\$416,548	102	71.2
13	3006	Australian Catholic University Limited	Private	211	\$628,020	\$634,200	0	12.7
14	7363	Australian College of Event Management Pty Ltd	Private	33	\$67,000	\$153,250	7	65.9
15	7756	Australian College of Fitness and Bodywork Pty Ltd	Private	82	\$297,422	\$306,427	3	6.2
16	7189	Australian College of Health & Fitness Pty Ltd	Private	129	\$536,211	\$536,211	0	4.9
17	7012	Australian Education Group Pty Ltd	Private	59	\$326,667	\$719,033	5	5.3
18	7155	Australian Institute of Family Counselling Ltd	Private	159	\$410,724	\$410,724	10	95.7
19	7321	Australian Institute of Fashion Design Pty Ltd	Private	137	\$615,275	\$694,370	59	85.2
20	7685	Australian Institute of Higher and Further Education Pty Ltd	Private	0	\$0	\$0	0	n/a
21	7163	Australian National Memorial Theatre Limited	Private	13	\$57,164	\$57,164	0	100.0
22	7646	Australian Skills Group Pty Ltd	Private	11	\$53,750	\$53,750	0	63.6
23	7143	Australian Wings Academy Pty Ltd	Private	29	\$501,745	\$520,753	3	100.0
24	7396	Australis College Pty Ltd	Private	386	\$986,136	\$988,745	14	39.7

	Provider ID	Provider name 103A (b)(i)	Provider type	Students undertaking approved courses 103A (b)(iii)	Loans paid 103A (b)(ii)	Tuition fees charged 103A (b)(v)	Students completing approved courses 103A (b)(iv)	Unit of study completion rate (%)
25	7009	Baptist Business College Ltd	Private	59	\$302,982	\$464,779	39	95.4
26	7094	Basair Australia Pty Ltd	Private	158	\$3,303,817	\$3,332,595	26	73.9
27	2246	Batchelor Institute of Indigenous Tertiary Education	Other Public	0	\$0	\$0	0	n/a
28	7203	BCA National Training Group Pty Ltd	Private	339	\$1,197,684	\$1,503,351	1	31.0
29	7144	Benchmark Resources Pty Ltd	Private	0	\$0	\$0	0	n/a
30	7082	Bendigo Kangan Institute	TAFE	443	\$1,567,747	\$1,571,153	1	64.7
31	4366	Box Hill Institute	TAFE	754	\$5,573,802	\$5,581,500	4	79.1
32	7810	BSI Learning Institute Pty Limited	Private	0	\$0	\$0	0	n/a
33	7518	C3 Church Sydney Ltd	Private	0	\$0	\$0	0	n/a
34	4406	Canberra Institute of Technology	TAFE	196	\$509,716	\$520,634	21	72.4
35	7666	Care Training Institute Pty Ltd	Private	0	\$0	\$0	0	n/a
36	7629	Central Australian Institute of Technology Pty Ltd	Private	0	\$0	\$0	0	n/a
37	2200	Central Queensland University	Other Public	395	\$1,086,252	\$1,086,487	23	74.1
38	8073	Central Regional TAFE	TAFE	100	\$255,601	\$255,601	9	45.2
39	3001	Charles Darwin University	Other Public	26	\$25,729	\$25,784	0	30.3
40	7086	Charlton Brown Pty Ltd	Private	0	\$0	\$0	0	n/a
41	7073	Chisholm Institute of Technical and Further Education	TAFE	1,491	\$4,506,015	\$4,512,967	230	48.9
42	7387	Cinimod Enterprises Pty Ltd	Private	61	\$250,555	\$250,555	47	82.2
43	7429	CMA Training Group Pty Ltd	Private	91	\$303,730	\$303,730	36	100.0
44	7276	Contour Systems Pty Ltd	Private	6	\$26,668	\$33,443	0	100.0
45	7742	Demi International Beauty Academy Pty Ltd	Private	171	\$801,034	\$873,334	75	93.2
46	7535	Department of Training and Workforce Development	TAFE	<5	\$849	\$849	0	0.0
47	7347	Design Schools Australia Pty Ltd	Private	42	\$157,041	\$286,745	8	92.9
48	2235	Edith Cowan University	Other Public	169	\$316,929	\$316,929	151	93.7
49	7451	Education IT Solutions Pty Ltd	Private	0	\$0	\$0	0	n/a
50	7020	Ella Bache College Pty Ltd	Private	82	\$275,755	\$336,000	0	0.0
51	7159	Emma's Secret Investments Pty Ltd	Private	233	\$1,461,875	\$1,461,875	64	90.5
52	8034	Envirotech Education Pty Ltd	Private	<5	\$7,150	\$7,150	0	n/a
53	7262	EQUALS International (Aust) Pty Ltd	Private	22	\$93,613	\$95,032	0	0.0
54	7068	Federation Training	TAFE	301	\$923,703	\$925,404	13	82.1
55	2154	Federation University Australia	Other Public	249	\$763,504	\$764,798	35	83.8
56	7172	Flight Training Adelaide Pty Ltd	Private	73	\$1,883,888	\$1,956,723	18	97.7
57	7767	Forsythes Training Pty Limited	Private	0	\$0	\$0	0	n/a
58	7230	Foundation for Education & Training Ltd	Private	6	\$9,428	\$11,848	0	0.0
59	7729	Global Training Institute Pty Ltd	Private	<5	\$7,926	\$7,926	0	n/a
60	4372	Gordon Institute of TAFE	TAFE	313	\$613,419	\$614,271	93	83.2
61	7145	Goulburn Ovens Institute of TAFE	TAFE	215	\$673,062	\$673,262	3	74.6
62	7651	HCR Constructions Pty Ltd	Private	<5	\$1,250	\$1,250	0	0.0
63	7050	Headmasters Academy Pty Ltd	Private	5	\$12,500	\$22,500	5	100.0
64	7306	Health Careers International Pty Ltd	Private	149	\$325,049	\$729,761	0	74.6
65	7251	Health Skills Australia Pty Ltd	Private	194	\$659,936	\$1,070,297	0	38.7
66	4383	Holmesglen Institute of TAFE	TAFE	972	\$2,364,139	\$2,365,680	239	84.8
67	7585	House of Learning Pty Ltd	Private	<5	\$3,333	\$4,227	0	n/a
68	7023	International Film School Sydney Pty Ltd	Private	82	\$393,337	\$393,337	42	31.6

	Provider ID	Provider name 103A (b)(i)	Provider type	Students undertaking approved courses 103A (b)(iii)	Loans paid 103A (b)(ii)	Tuition fees charged 103A (b)(v)	Students completing approved courses 103A (b)(iv)	Unit of study completion rate (%)
69	7280	Job Training Institute Pty Ltd	Private	<5	\$18,333	\$18,333	0	n/a
70	7485	Just Careers Training Pty Ltd	Private	<5	\$3,847	\$3,847	0	n/a
71	7661	Kiama Community College Incorporated	Private	10	\$16,601	\$16,601	5	88.8
72	7380	Kreate Pty Ltd	Private	55	\$95,875	\$95,875	1	95.8
73	7325	LaTrobe International Galleries Pty. Ltd.	Private	24	\$61,996	\$80,503	10	91.4
74	7473	LTT Group Pty Ltd	Private	5	\$16,728	\$16,728	0	100.0
75	7235	Mater Education Limited	Private	168	\$733,750	\$1,098,125	0	94.2
76	7784	Media Make Up Academy & Agency Pty Ltd	Private	7	\$32,500	\$42,185	0	92.3
77	7590	Melbourne College of Hairdressing Beauty Therapy & Natural Medicine Pty Ltd as Trustee for The Melbourne College Trust	Private	20	\$68,123	\$68,123	0	0.0
78	7524	Melbourne Institute of Nails & Beauty Pty Ltd	Private	0	\$0	\$0	0	n/a
79	4363	Melbourne Polytechnic	TAFE	712	\$1,876,153	\$1,876,153	149	78.6
80	7052	Melbourne Rudolf Steiner Seminar Ltd	Private	20	\$50,832	\$94,000	0	47.5
81	7135	Milneworth Pty Ltd	Private	10	\$26,000	\$27,146	6	90.0
82	7878	Milson College Pty Ltd	Private	0	\$0	\$0	0	n/a
83	8092	Monarch Institute Pty Ltd	Private	0	\$0	\$0	0	n/a
84	7944	Monash Student Association (Clayton) Inc	Private	0	\$0	\$0	0	n/a
85	7437	MVJ Enterprises Pty Ltd	Private	93	\$381,214	\$413,714	50	95.2
86	7905	N.S.E. RTO Pty Ltd	Private	0	\$0	\$0	0	n/a
87	4336	Navitas Professional Institute Pty Ltd	Private	209	\$584,758	\$822,224	0	0.0
88	7461	New England Institute of Technology Pty Ltd	Private	14	\$36,667	\$36,667	0	0.0
89	7900	New Horizons Learning Centres Holdings Pty Ltd	Private	0	\$0	\$0	0	n/a
90	7336	New York Film Academy Australia Pty Ltd	Private	194	\$1,088,560	\$1,089,245	5	77.4
91	7301	Niche Education Group Pty Ltd	Private	187	\$862,680	\$1,151,660	42	88.0
92	8071	North Metropolitan TAFE	TAFE	1,172	\$3,230,397	\$3,230,397	205	80.8
93	8060	North Regional TAFE	TAFE	19	\$63,104	\$63,104	1	95.7
94	7080	Pharmaceutical Society of Australia Limited	Private	<5	\$2,250	\$2,250	0	n/a
95	7427	Pragmatic Training Pty. Ltd.	Private	565	\$2,198,057	\$2,327,206	24	87.1
96	7197	Proteus Technologies Pty Ltd	Private	25	\$102,950	\$102,950	0	65.9
97	7787	QIHE Pty Ltd	Private	29	\$100,358	\$100,358	0	83.3
98	7479	Queensland Agricultural Training Colleges	Other Public	6	\$12,444	\$12,444	0	100.0
99	7569	QUEENSLAND MASTER BUILDERS ASSOCIATION INDUSTRIAL ORGANISATION OF EMPLOYERS	Private	0	\$0	\$0	0	n/a
100	3034	Royal Melbourne Institute of Technology	Other Public	2,649	\$8,111,507	\$8,243,944	918	78.7
101	7278	Royal Victorian Aero Club	Private	13	\$306,832	\$306,832	2	93.9
102	4371	SAE Institute Pty Limited	Private	152	\$398,749	\$717,117	74	87.5
103	4397	Sarina Russo Schools Australia Pty Ltd	Private	15	\$37,350	\$37,350	0	75.0
104	7648	SCA Hair & Beauty Academy Pty Ltd	Private	0	\$0	\$0	0	n/a
105	7054	Scripture Union Queensland	Private	<5	\$7,800	\$7,800	0	n/a
106	7570	SEDA Group Pty Ltd	Private	74	\$331,275	\$331,403	61	90.4
107	7700	Selmar Holdings Pty Ltd	Private	6	\$14,067	\$20,924	0	n/a
108	7309	SMR Learning Services Pty Ltd	Private	366	\$973,076	\$1,003,229	3	52.1
109	4468	South Metropolitan TAFE	TAFE	487	\$1,408,980	\$1,408,980	113	80.8
110	8072	South Regional TAFE	TAFE	97	\$285,732	\$285,732	17	85.8
111	7142	South West Institute of TAFE	TAFE	196	\$625,922	\$628,492	12	75.4

	Provider ID	Provider name 103A (b)(i)	Provider type	Students undertaking approved courses 103A (b)(iii)	Loans paid 103A (b)(ii)	Tuition fees charged 103A (b)(v)	Students completing approved courses 103A (b)(iv)	Unit of study completion rate (%)
112	7239	Southern Cross Education Institute Pty Ltd	Private	0	\$0	\$0	0	n/a
113	7037	St Patrick's Business College Limited	Private	18	\$45,750	\$145,938	17	n/a
114	7382	Strategix Training Group Pty Ltd	Private	155	\$653,653	\$657,721	0	43.1
115	7102	Sunraysia Institute of TAFE	TAFE	91	\$134,250	\$134,649	26	84.8
116	2177	Swinburne University of Technology	Other Public	1,053	\$3,787,269	\$3,881,484	334	87.9
117	7041	Sydney Institute of Health Sciences Pty. Limited	Private	34	\$163,230	\$163,230	0	99.3
118	4450	TAFE Queensland	TAFE	6,121	\$21,611,789	\$22,517,963	1,145	79.5
119	7338	TAFE SA	TAFE	1,437	\$2,805,569	\$2,828,415	6	76.0
120	7826	Tandem College Pty Ltd	Private	204	\$640,553	\$640,553	0	4.5
121	7460	TasTAFE	TAFE	296	\$567,127	\$570,966	36	89.9
122	7075	Technical and Further Education Commission of NSW	TAFE	6,779	\$14,237,119	\$14,454,563	1,271	94.8
123	7028	The Academy of Interactive Entertainment Ltd	Private	188	\$771,952	\$1,839,718	16	76.3
124	7329	The French Beauty Academy Pty Ltd	Private	169	\$1,564,731	\$1,605,832	9	44.9
125	7091	The Health Arts College Pty Ltd	Private	34	\$132,600	\$132,600	0	n/a
126	7261	The International Golf Institute Pty Ltd	Private	<5	\$1,250	\$1,250	0	n/a
127	7697	The Lady Gowrie Child Centre Melbourne Inc	Private	14	\$48,182	\$48,182	0	58.1
128	7056	The Malka Group Pty. Ltd.	Private	13	\$26,643	\$26,643	1	9.9
129	7465	The Mask Academy Pty Ltd	Private	48	\$142,500	\$142,500	0	3.0
130	2148	The National Institute of Dramatic Art	Other Public	35	\$289,500	\$447,000	27	80.7
131	7273	The Quality Training and Hospitality College Pty Ltd	Private	0	\$0	\$0	0	n/a
132	7683	The Redcliffe Aero Club	Private	5	\$80,831	\$92,439	1	69.4
133	3044	The University of Notre Dame Australia	Private	<5	\$1,236	\$1,236	0	42.9
134	3019	The University of Queensland	Other Public	9	\$17,500	\$20,438	4	0.0
135	4375	Think: Colleges Pty Ltd	Private	91	\$312,357	\$513,477	4	36.3
136	4449	Torrens University Australia Limited	Other Public	0	\$0	\$0	0	n/a
137	7131	Transformations - Pathways to Competence & Developing Excellence Pty Ltd	Private	140	\$328,713	\$328,713	0	62.5
138	7372	Unity College Australia Incorporated	Private	67	\$179,167	\$179,167	1	n/a
139	4377	UOWC Ltd	Private	87	\$413,174	\$589,354	10	55.9
140	3007	Victoria University	Other Public	935	\$2,614,086	\$2,618,261	151	82.5
141	7349	Victorian Fitness Academy Pty Ltd	Private	197	\$923,178	\$923,178	86	95.1
142	7478	Virtu Design Institute Pty Limited	Private	12	\$35,502	\$35,502	0	100.0
143	4394	William Angliss Institute of TAFE	TAFE	130	\$269,191	\$271,040	32	89.2
144	7118	Wodonga Institute of TAFE	TAFE	195	\$438,672	\$440,261	24	87.5
		<b>Total:</b>		<b>35,197</b>	<b>\$114,147,477</b>	<b>\$121,216,416</b>	<b>6,302</b>	<b>81.4</b>

**Table 2: VSL providers ordered by VSL-assisted student numbers for the period 1 July 2017 to 31 December 2017**

Rank	Provider ID	Provider name	Students	EFTSL	Tuition fees	Paid upfront	Loans paid	Tuition fees per student	Tuition fees per EFTSL	Loans per student	Loans per EFTSL
1	7075	Technical and Further Education Commission of NSW	6,779	3320.9	\$14,454,562.96	\$217,444.05	\$14,237,118.91	\$2,132.26	\$4,352.64	\$2,100.18	\$4,287.17
2	4450	TAFE Queensland	6,121	2119.5	\$22,517,963.26	\$906,174.70	\$21,611,788.56	\$3,678.80	\$10,623.97	\$3,530.76	\$10,196.44
3	3034	Royal Melbourne Institute of Technology	2,649	1369.8	\$8,243,944.42	\$131,219.85	\$8,111,506.97	\$3,112.10	\$6,018.48	\$3,062.10	\$5,921.79
4	7073	Chisholm Institute of Technical and Further Education	1,491	623.1	\$4,512,967.36	\$6,952.80	\$4,506,014.56	\$3,026.81	\$7,243.13	\$3,022.14	\$7,231.97
5	7338	TAFE SA	1,437	450.4	\$2,828,414.99	\$22,845.90	\$2,805,569.09	\$1,968.28	\$6,280.16	\$1,952.38	\$6,229.43
6	8071	North Metropolitan TAFE	1,172	509.0	\$3,230,396.89	\$0.00	\$3,230,396.89	\$2,756.31	\$6,347.01	\$2,756.31	\$6,347.01
7	2177	Swinburne University of Technology	1,053	461.6	\$3,881,483.99	\$94,214.81	\$3,787,269.18	\$3,686.12	\$8,408.09	\$3,596.65	\$8,204.00
8	4383	Holmesglen Institute of TAFE	972	534.5	\$2,365,680.37	\$1,541.26	\$2,364,139.11	\$2,433.83	\$4,425.72	\$2,432.24	\$4,422.84
9	3007	Victoria University	935	320.3	\$2,618,260.80	\$4,174.56	\$2,614,086.24	\$2,800.28	\$8,174.86	\$2,795.81	\$8,161.83
10	4366	Box Hill Institute	754	404.4	\$5,581,499.78	\$7,698.09	\$5,573,801.69	\$7,402.52	\$13,802.53	\$7,392.31	\$13,783.50
11	4363	Melbourne Polytechnic	712	310.9	\$1,876,152.99	\$0.00	\$1,876,152.99	\$2,635.05	\$6,034.12	\$2,635.05	\$6,034.12
12	7427	Pragmatic Training Pty. Ltd.	565	222.8	\$2,327,206.41	\$129,149.76	\$2,198,056.65	\$4,118.95	\$10,443.40	\$3,890.37	\$9,863.83
13	4468	South Metropolitan TAFE	487	216.9	\$1,408,979.76	\$0.00	\$1,408,979.76	\$2,893.18	\$6,495.25	\$2,893.18	\$6,495.25
14	7082	Bendigo Kangan Institute	443	253.8	\$1,571,152.50	\$3,405.90	\$1,567,746.60	\$3,546.62	\$6,189.56	\$3,538.93	\$6,176.15
15	2200	Central Queensland University	395	169.3	\$1,086,487.00	\$234.60	\$1,086,252.40	\$2,750.60	\$6,417.51	\$2,750.01	\$6,416.12
16	7396	Australis College Pty Ltd	386	190.7	\$988,745.43	\$2,608.98	\$986,136.45	\$2,561.52	\$5,184.82	\$2,554.76	\$5,171.14
17	7309	SMR Learning Services Pty Ltd	366	114.5	\$1,003,228.60	\$30,153.00	\$973,075.60	\$2,741.06	\$8,763.35	\$2,658.68	\$8,499.96
18	7203	BCA National Training Group Pty Ltd	339	135.7	\$1,503,351.10	\$305,667.18	\$1,197,683.92	\$4,434.66	\$11,078.49	\$3,532.99	\$8,825.97
19	4372	Gordon Institute of TAFE	313	166.5	\$614,270.80	\$852.25	\$613,418.55	\$1,962.53	\$3,690.09	\$1,959.80	\$3,684.97
20	7068	Federation Training	301	208.8	\$925,403.85	\$1,292.81	\$923,702.94	\$3,074.43	\$4,433.02	\$3,068.78	\$4,424.87
21	7460	TasTAFE	296	158.0	\$570,966.19	\$3,839.36	\$567,126.83	\$1,928.94	\$3,613.99	\$1,915.97	\$3,589.69
22	2154	Federation University Australia	249	98.0	\$764,798.00	\$1,294.00	\$763,504.00	\$3,071.48	\$7,800.54	\$3,066.28	\$7,787.34
23	7159	Emma's Secret Investments Pty Ltd	233	213.1	\$1,461,875.00	\$0.00	\$1,461,875.00	\$6,274.14	\$6,859.24	\$6,274.14	\$6,859.24
24	7145	Goulburn Ovens Institute of TAFE	215	56.9	\$673,261.60	\$200.00	\$673,061.60	\$3,131.45	\$11,828.00	\$3,130.52	\$11,824.49
25	3006	Australian Catholic University Limited	211	119.1	\$634,200.00	\$6,179.94	\$628,020.06	\$3,005.69	\$5,324.94	\$2,976.40	\$5,273.05
26	4336	Navitas Professional Institute Pty Ltd	209	57.3	\$822,224.00	\$237,466.14	\$584,757.86	\$3,934.09	\$14,352.09	\$2,797.88	\$10,207.07
27	7826	Tandem College Pty Ltd	204	74.9	\$640,552.74	\$0.00	\$640,552.74	\$3,139.96	\$8,550.96	\$3,139.96	\$8,550.96
28	7349	Victorian Fitness Academy Pty Ltd	197	94.5	\$923,177.94	\$0.00	\$923,177.94	\$4,686.18	\$9,769.08	\$4,686.18	\$9,769.08
29	7142	South West Institute of TAFE	196	102.0	\$628,491.75	\$2,569.40	\$625,922.35	\$3,206.59	\$6,160.10	\$3,193.48	\$6,134.92
30	4406	Canberra Institute of Technology	196	89.6	\$520,634.00	\$10,917.56	\$509,716.44	\$2,656.30	\$5,813.18	\$2,600.59	\$5,691.28
31	7118	Wodonga Institute of TAFE	195	93.2	\$440,260.50	\$1,589.00	\$438,671.50	\$2,257.75	\$4,723.39	\$2,249.60	\$4,706.35
32	7336	New York Film Academy Australia Pty Ltd	194	108.5	\$1,089,244.63	\$0.00	\$1,088,559.63	\$5,614.66	\$10,038.47	\$5,611.13	\$10,032.16
33	7251	Health Skills Australia Pty Ltd	194	64.7	\$1,070,296.73	\$410,360.28	\$659,936.45	\$5,516.99	\$16,530.57	\$3,401.73	\$10,192.62
34	7028	The Academy of Interactive Entertainment Ltd	188	105.6	\$1,839,718.00	\$1,067,765.71	\$771,952.29	\$9,785.73	\$17,415.80	\$4,106.13	\$7,307.73
35	7301	Niche Education Group Pty Ltd	187	82.6	\$1,151,660.30	\$288,980.78	\$862,679.52	\$6,158.61	\$13,946.00	\$4,613.26	\$10,446.59
36	7742	Demi International Beauty Academy Pty Ltd	171	80.5	\$873,333.98	\$72,299.62	\$801,034.36	\$5,107.22	\$10,848.87	\$4,684.41	\$9,950.74
37	7329	The French Beauty Academy Pty Ltd	169	159.1	\$1,605,831.83	\$41,100.81	\$1,564,731.02	\$9,501.96	\$10,094.49	\$9,258.76	\$9,836.13
38	2235	Edith Cowan University	169	52.9	\$316,929.10	\$0.00	\$316,929.10	\$1,875.32	\$5,996.43	\$1,875.32	\$5,996.43
39	7235	Mater Education Limited	168	73.2	\$1,098,125.00	\$364,375.00	\$733,750.00	\$6,536.46	\$14,998.63	\$4,367.56	\$10,021.85
40	7155	Australian Institute of Family Counselling Ltd	159	40.9	\$410,724.00	\$0.00	\$410,724.00	\$2,583.17	\$10,050.46	\$2,583.17	\$10,050.46
41	7094	Basair Australia Pty Ltd	158	55.4	\$3,332,594.50	\$0.00	\$3,303,817.00	\$21,092.37	\$60,198.60	\$20,910.23	\$59,678.78
42	7382	Strategix Training Group Pty Ltd	155	72.3	\$657,720.75	\$4,067.33	\$653,653.42	\$4,243.36	\$9,094.59	\$4,217.12	\$9,038.35
43	7092	Australian Careers Business College Pty Ltd	154	55.0	\$416,547.85	\$1,225.00	\$415,322.85	\$2,704.86	\$7,576.35	\$2,696.90	\$7,554.07
44	4371	SAE Institute Pty Limited	152	39.9	\$717,117.00	\$318,367.55	\$398,749.45	\$4,717.88	\$17,986.61	\$2,623.35	\$10,001.37

Rank	Provider ID	Provider name	Students	EFTSL	Tuition fees	Paid upfront	Loans paid	Tuition fees per student	Tuition fees per EFTSL	Loans per student	Loans per EFTSL
45	7306	Health Careers International Pty Ltd	149	62.7	\$729,760.62	\$404,712.05	\$325,048.57	\$4,897.72	\$11,635.51	\$2,181.53	\$5,182.67
46	7131	Transformations - Pathways to Competence & Developing Excellence Pty Ltd	140	63.0	\$328,712.66	\$0.00	\$328,712.66	\$2,347.95	\$5,217.66	\$2,347.95	\$5,217.66
47	7321	Australian Institute of Fashion Design Pty Ltd	137	63.2	\$694,370.06	\$79,095.08	\$615,274.98	\$5,068.39	\$10,992.19	\$4,491.06	\$9,740.08
48	4394	William Angliss Institute of TAFE	130	44.2	\$271,039.85	\$1,848.37	\$269,191.48	\$2,084.92	\$6,137.65	\$2,070.70	\$6,095.79
49	7189	Australian College of Health & Fitness Pty Ltd	129	58.3	\$536,210.81	\$0.00	\$536,210.81	\$4,156.67	\$9,192.62	\$4,156.67	\$9,192.62
50	7124	Academy of Information Technology Pty Ltd	109	30.0	\$402,489.50	\$139,269.38	\$263,220.12	\$3,692.56	\$13,417.21	\$2,414.86	\$8,774.59
51	8073	Central Regional TAFE	100	48.5	\$255,600.78	\$0.00	\$255,600.78	\$2,556.01	\$5,265.85	\$2,556.01	\$5,265.85
52	8072	South Regional TAFE	97	43.8	\$285,732.35	\$0.00	\$285,732.35	\$2,945.69	\$6,517.51	\$2,945.69	\$6,517.51
53	7437	MVJ Enterprises Pty Ltd	93	38.0	\$413,714.00	\$32,500.00	\$381,214.00	\$4,448.54	\$10,887.21	\$4,099.08	\$10,031.95
54	7102	Sunraysia Institute of TAFE	91	46.5	\$134,649.20	\$399.30	\$134,249.90	\$1,479.66	\$2,894.13	\$1,475.27	\$2,885.55
55	7429	CMA Training Group Pty Ltd	91	39.6	\$303,729.67	\$0.00	\$303,729.67	\$3,337.69	\$7,679.64	\$3,337.69	\$7,679.64
56	4375	Think: Colleges Pty Ltd	91	31.3	\$513,477.17	\$201,120.53	\$312,356.64	\$5,642.61	\$16,410.53	\$3,432.49	\$9,982.79
57	4377	UOWC Ltd	87	44.7	\$589,353.94	\$176,180.06	\$413,173.88	\$6,774.18	\$13,197.20	\$4,749.13	\$9,252.06
58	7023	International Film School Sydney Pty Ltd	82	59.0	\$393,337.00	\$0.00	\$393,337.00	\$4,796.79	\$6,666.73	\$4,796.79	\$6,666.73
59	7756	Australian College of Fitness and Bodywork Pty Ltd	82	45.0	\$306,427.11	\$9,005.00	\$297,422.11	\$3,736.92	\$6,814.76	\$3,627.10	\$6,614.50
60	7020	Ella Bache College Pty Ltd	82	29.0	\$335,999.94	\$60,244.71	\$275,755.23	\$4,097.56	\$11,583.01	\$3,362.87	\$9,506.18
61	7570	SEDA Group Pty Ltd	74	27.7	\$331,403.30	\$128.34	\$331,274.96	\$4,478.42	\$11,977.08	\$4,476.69	\$11,972.44
62	7172	Flight Training Adelaide Pty Ltd	73	44.0	\$1,956,723.40	\$72,515.79	\$1,883,887.95	\$26,804.43	\$44,440.69	\$25,806.68	\$42,786.46
63	7372	Unity College Australia Incorporated	67	29.8	\$179,167.00	\$0.00	\$179,167.00	\$2,674.13	\$6,010.70	\$2,674.13	\$6,010.70
64	7387	Cinimod Enterprises Pty Ltd	61	23.5	\$250,555.42	\$0.00	\$250,555.42	\$4,107.47	\$10,652.87	\$4,107.47	\$10,652.87
65	7009	Baptist Business College Ltd	59	42.8	\$464,778.50	\$161,796.18	\$302,982.32	\$7,877.60	\$10,872.01	\$5,135.29	\$7,087.31
66	7012	Australian Education Group Pty Ltd	59	32.7	\$719,033.27	\$392,366.63	\$326,666.64	\$12,187.00	\$22,013.42	\$5,536.72	\$10,001.00
67	7380	Kreate Pty Ltd	55	16.3	\$95,875.30	\$0.00	\$95,875.30	\$1,743.19	\$5,900.02	\$1,743.19	\$5,900.02
68	7465	The Mask Academy Pty Ltd	48	14.2	\$142,500.00	\$0.00	\$142,500.00	\$2,968.75	\$10,050.85	\$2,968.75	\$10,050.85
69	7541	Australasian Beauty Therapy Academy Pty Ltd	47	17.9	\$172,800.00	\$0.00	\$172,800.00	\$3,676.60	\$9,648.24	\$3,676.60	\$9,648.24
70	7347	Design Schools Australia Pty Ltd	42	20.9	\$286,745.00	\$129,704.00	\$157,041.00	\$6,827.26	\$13,715.53	\$3,739.07	\$7,511.55
71	2148	The National Institute of Dramatic Art	35	28.1	\$447,000.00	\$157,500.00	\$289,500.00	\$12,771.43	\$15,935.83	\$8,271.43	\$10,320.86
72	7041	Sydney Institute of Health Sciences Pty. Limited	34	12.6	\$163,230.00	\$0.00	\$163,230.00	\$4,800.88	\$12,971.54	\$4,800.88	\$12,971.54
73	7091	The Health Arts College Pty Ltd	34	12.2	\$132,600.00	\$0.00	\$132,600.00	\$3,900.00	\$10,833.33	\$3,900.00	\$10,833.33
74	7363	Australian College of Event Management Pty Ltd	33	7.5	\$153,250.00	\$86,250.00	\$67,000.00	\$4,643.94	\$20,501.67	\$2,030.30	\$8,963.21
75	7701	Aurora Training Institute Pty Ltd as trustee for the Aurora Trust	30	15.5	\$65,539.41	\$0.00	\$65,539.41	\$2,184.65	\$4,225.62	\$2,184.65	\$4,225.62
76	7143	Australian Wings Academy Pty Ltd	29	11.8	\$520,753.00	\$19,008.00	\$501,745.00	\$17,957.00	\$44,056.94	\$17,301.55	\$42,448.82
77	7787	QIHE Pty Ltd	29	11.5	\$100,358.10	\$0.00	\$100,358.10	\$3,460.62	\$8,716.33	\$3,460.62	\$8,716.33
78	3001	Charles Darwin University	26	6.7	\$25,783.80	\$55.00	\$25,728.80	\$991.68	\$3,832.88	\$989.57	\$3,824.71
79	7197	Proteus Technologies Pty Ltd	25	18.3	\$102,950.00	\$0.00	\$102,950.00	\$4,118.00	\$5,621.38	\$4,118.00	\$5,621.38
80	7407	Air Gold Coast Pty. Ltd.	25	10.6	\$544,361.00	\$0.00	\$544,361.00	\$21,774.44	\$51,549.34	\$21,774.44	\$51,549.34
81	4407	Alphacrucis College Limited	25	1.3	\$99,115.00	\$0.00	\$99,115.00	\$3,964.60	\$75,516.19	\$3,964.60	\$75,516.19
82	7325	LaTrobe International Galleries Pty. Ltd.	24	6.2	\$80,503.00	\$18,507.00	\$61,996.00	\$3,354.29	\$12,977.87	\$2,583.17	\$9,994.36
83	7262	EQUALS International (Aust) Pty Ltd	22	8.0	\$95,031.52	\$1,418.57	\$93,612.95	\$4,319.61	\$11,927.99	\$4,255.13	\$11,749.94
84	7590	Melbourne College of Hairdressing Beauty Therapy & Natural Medicine Pty Ltd as Trustee for The Melbourne College Trust	20	10.3	\$68,123.00	\$0.00	\$68,123.00	\$3,406.15	\$6,637.40	\$3,406.15	\$6,637.40
85	7052	Melbourne Rudolf Steiner Seminar Ltd	20	10.0	\$94,000.00	\$43,168.00	\$50,832.00	\$4,700.00	\$9,400.00	\$2,541.60	\$5,083.20
86	8060	North Regional TAFE	19	9.6	\$63,104.10	\$0.00	\$63,104.10	\$3,321.27	\$6,545.93	\$3,321.27	\$6,545.93
87	7037	St Patrick's Business College Limited	18	9.0	\$145,938.00	\$100,188.00	\$45,750.00	\$8,107.67	\$16,215.33	\$2,541.67	\$5,083.33



Rank	Provider ID	Provider name	Students	EFTSL	Tuition fees	Paid upfront	Loans paid	Tuition fees per student	Tuition fees per EFTSL	Loans per student	Loans per EFTSL
88	4397	Sarina Russo Schools Australia Pty Ltd	15	3.8	\$37,350.00	\$0.00	\$37,350.00	\$2,490.00	\$9,960.00	\$2,490.00	\$9,960.00
89	7697	The Lady Gowrie Child Centre Melbourne Inc	14	10.0	\$48,181.65	\$0.00	\$48,181.65	\$3,441.55	\$4,804.47	\$3,441.55	\$4,804.47
90	7461	New England Institute of Technology Pty Ltd	14	6.0	\$36,666.57	\$0.00	\$36,666.57	\$2,619.04	\$6,100.93	\$2,619.04	\$6,100.93
91	7163	Australian National Memorial Theatre Limited	13	7.1	\$57,164.00	\$0.00	\$57,164.00	\$4,397.23	\$8,108.37	\$4,397.23	\$8,108.37
92	7278	Royal Victorian Aero Club	13	6.8	\$306,831.66	\$0.00	\$306,831.66	\$23,602.44	\$45,456.54	\$23,602.44	\$45,456.54
93	7056	The Malka Group Pty. Ltd.	13	4.2	\$26,643.00	\$0.00	\$26,643.00	\$2,049.46	\$6,313.51	\$2,049.46	\$6,313.51
94	7478	Virtu Design Institute Pty Limited	12	3.6	\$35,502.00	\$0.00	\$35,502.00	\$2,958.50	\$9,997.75	\$2,958.50	\$9,997.75
95	7646	Australian Skills Group Pty Ltd	11	3.7	\$53,750.00	\$0.00	\$53,750.00	\$4,886.36	\$14,673.76	\$4,886.36	\$14,673.76
96	7661	Kiama Community College Incorporated	10	4.4	\$16,600.80	\$0.00	\$16,600.80	\$1,660.08	\$3,772.91	\$1,660.08	\$3,772.91
97	7819	Atkinson Training and Development Pty Limited	10	3.9	\$19,966.10	\$0.00	\$19,966.10	\$1,996.61	\$5,132.67	\$1,996.61	\$5,132.67
98	7135	Milneworth Pty Ltd	10	3.3	\$27,146.00	\$1,146.00	\$26,000.00	\$2,714.60	\$8,137.78	\$2,600.00	\$7,794.23
99	3019	The University of Queensland	9	4.5	\$20,437.50	\$2,937.50	\$17,500.00	\$2,270.83	\$4,541.67	\$1,944.44	\$3,888.89
100	7784	Media Make Up Academy & Agency Pty Ltd	7	3.3	\$42,185.00	\$9,685.00	\$32,500.00	\$6,026.43	\$12,980.00	\$4,642.86	\$10,000.00
101	7108	Australian Academy of Vocational Education and Trades Pty Ltd	6	2.8	\$25,283.75	\$0.00	\$25,283.75	\$4,213.96	\$9,194.09	\$4,213.96	\$9,194.09
102	7276	Contour Systems Pty Ltd	6	2.7	\$33,443.00	\$6,775.00	\$26,668.00	\$5,573.83	\$12,553.68	\$4,444.67	\$10,010.51
103	7700	Selmar Holdings Pty Ltd	6	2.3	\$20,924.00	\$6,857.45	\$14,066.55	\$3,487.33	\$8,980.26	\$2,344.43	\$6,037.15
104	7479	Queensland Agricultural Training Colleges	6	1.8	\$12,444.00	\$0.00	\$12,444.00	\$2,074.00	\$6,913.33	\$2,074.00	\$6,913.33
105	7230	Foundation for Education & Training Ltd	6	1.2	\$11,848.00	\$2,420.50	\$9,427.50	\$1,974.67	\$10,005.07	\$1,571.25	\$7,961.07
106	7473	LTT Group Pty Ltd	5	2.9	\$16,728.00	\$0.00	\$16,728.00	\$3,345.60	\$5,854.89	\$3,345.60	\$5,854.89
107	7683	The Redcliffe Aero Club	5	1.3	\$92,438.76	\$11,608.10	\$80,830.66	\$18,487.75	\$70,499.36	\$16,166.13	\$61,646.32
108	7050	Headmasters Academy Pty Ltd	5	0.8	\$22,500.00	\$10,000.00	\$12,500.00	\$4,500.00	\$27,108.43	\$2,500.00	\$15,060.24
109	7280	Job Training Institute Pty Ltd	<5	2.0	\$18,333.12	\$0.00	\$18,333.12	n.p.	\$9,166.56	n.p.	\$9,166.56
110	8034	Envirotech Education Pty Ltd	<5	1.3	\$7,150.02	\$0.00	\$7,150.02	n.p.	\$5,363.86	n.p.	\$5,363.86
111	7485	Just Careers Training Pty Ltd	<5	1.0	\$3,846.90	\$0.00	\$3,846.90	n.p.	\$3,885.76	n.p.	\$3,885.76
112	7729	Global Training Institute Pty Ltd	<5	1.6	\$7,926.00	\$0.00	\$7,926.00	n.p.	\$5,006.00	n.p.	\$5,006.00
113	7054	Scripture Union Queensland	<5	1.0	\$7,800.00	\$0.00	\$7,800.00	n.p.	\$7,803.12	n.p.	\$7,803.12
114	3044	The University of Notre Dame Australia	<5	0.3	\$1,236.15	\$0.00	\$1,236.15	n.p.	\$4,808.05	n.p.	\$4,808.05
115	7080	Pharmaceutical Society of Australia Limited	<5	0.8	\$2,250.00	\$0.00	\$2,250.00	n.p.	\$3,000.00	n.p.	\$3,000.00
116	7585	House of Learning Pty Ltd	<5	0.3	\$4,226.66	\$893.33	\$3,333.33	n.p.	\$12,681.25	n.p.	\$10,000.99
117	7651	HCR Constructions Pty Ltd	<5	0.2	\$1,249.98	\$0.00	\$1,249.98	n.p.	\$5,506.52	n.p.	\$5,506.52
118	7535	Department of Training and Workforce Development	<5	0.1	\$849.05	\$0.00	\$849.05	n.p.	\$8,032.64	n.p.	\$8,032.64
119	7261	The International Golf Institute Pty Ltd	<5	0.0	\$1,250.00	\$0.00	\$1,250.00	n.p.	\$500,000.00	n.p.	\$500,000.00
		<b>Total:</b>	<b>35,197</b>	<b>15544.9</b>	<b>\$121,216,416.10</b>	<b>\$7,037,530.85</b>	<b>\$114,147,477.39</b>	<b>\$3,443.94</b>	<b>\$7,797.85</b>	<b>\$3,243.10</b>	<b>\$7,343.10</b>

**Table 3: VSL providers ordered by VSL loans paid for the period 1 July 2017 to 31 December 2017**

Rank	Provider ID	Provider name	Students	EFTSL	Tuition fees	Paid upfront	Loans paid	Tuition fees per student	Tuition fees per EFTSL	Loans per student	Loans per EFTSL
1	4450	TAFE Queensland	6,121	2119.5	\$22,517,963.26	\$906,174.70	\$21,611,788.56	\$3,678.80	\$10,623.97	\$3,530.76	\$10,196.44
2	7075	Technical and Further Education Commission of NSW	6,779	3320.9	\$14,454,562.96	\$217,444.05	\$14,237,118.91	\$2,132.26	\$4,352.64	\$2,100.18	\$4,287.17
3	3034	Royal Melbourne Institute of Technology	2,649	1369.8	\$8,243,944.42	\$131,219.85	\$8,111,506.97	\$3,112.10	\$6,018.48	\$3,062.10	\$5,921.79
4	4366	Box Hill Institute	754	404.4	\$5,581,499.78	\$7,698.09	\$5,573,801.69	\$7,402.52	\$13,802.53	\$7,392.31	\$13,783.50
5	7073	Chisholm Institute of Technical and Further Education	1,491	623.1	\$4,512,967.36	\$6,952.80	\$4,506,014.56	\$3,026.81	\$7,243.13	\$3,022.14	\$7,231.97
6	2177	Swinburne University of Technology	1,053	461.6	\$3,881,483.99	\$94,214.81	\$3,787,269.18	\$3,686.12	\$8,408.09	\$3,596.65	\$8,204.00
7	7094	Basair Australia Pty Ltd	158	55.4	\$3,332,594.50	\$0.00	\$3,303,817.00	\$21,092.37	\$60,198.60	\$20,910.23	\$59,678.78
8	8071	North Metropolitan TAFE	1,172	509.0	\$3,230,396.89	\$0.00	\$3,230,396.89	\$2,756.31	\$6,347.01	\$2,756.31	\$6,347.01
9	7338	TAFE SA	1,437	450.4	\$2,828,414.99	\$22,845.90	\$2,805,569.09	\$1,968.28	\$6,280.16	\$1,952.38	\$6,229.43
10	3007	Victoria University	935	320.3	\$2,618,260.80	\$4,174.56	\$2,614,086.24	\$2,800.28	\$8,174.86	\$2,795.81	\$8,161.83
11	4383	Holmesglen Institute of TAFE	972	534.5	\$2,365,680.37	\$1,541.26	\$2,364,139.11	\$2,433.83	\$4,425.72	\$2,432.24	\$4,422.84
12	7427	Pragmatic Training Pty. Ltd.	565	222.8	\$2,327,206.41	\$129,149.76	\$2,198,056.65	\$4,118.95	\$10,443.40	\$3,890.37	\$9,863.83
13	7172	Flight Training Adelaide Pty Ltd	73	44.0	\$1,956,723.40	\$72,515.79	\$1,883,887.95	\$26,804.43	\$44,440.69	\$25,806.68	\$42,786.46
14	4363	Melbourne Polytechnic	712	310.9	\$1,876,152.99	\$0.00	\$1,876,152.99	\$2,635.05	\$6,034.12	\$2,635.05	\$6,034.12
15	7082	Bendigo Kangan Institute	443	253.8	\$1,571,152.50	\$3,405.90	\$1,567,746.60	\$3,546.62	\$6,189.56	\$3,538.93	\$6,176.15
16	7329	The French Beauty Academy Pty Ltd	169	159.1	\$1,605,831.83	\$41,100.81	\$1,564,731.02	\$9,501.96	\$10,094.49	\$9,258.76	\$9,836.13
17	7159	Emma's Secret Investments Pty Ltd	233	213.1	\$1,461,875.00	\$0.00	\$1,461,875.00	\$6,274.14	\$6,859.24	\$6,274.14	\$6,859.24
18	4468	South Metropolitan TAFE	487	216.9	\$1,408,979.76	\$0.00	\$1,408,979.76	\$2,893.18	\$6,495.25	\$2,893.18	\$6,495.25
19	7203	BCA National Training Group Pty Ltd	339	135.7	\$1,503,351.10	\$305,667.18	\$1,197,683.92	\$4,434.66	\$11,078.49	\$3,532.99	\$8,825.97
20	7336	New York Film Academy Australia Pty Ltd	194	108.5	\$1,089,244.63	\$0.00	\$1,088,559.63	\$5,614.66	\$10,038.47	\$5,611.13	\$10,032.16
21	2200	Central Queensland University	395	169.3	\$1,086,487.00	\$234.60	\$1,086,252.40	\$2,750.60	\$6,417.51	\$2,750.01	\$6,416.12
22	7396	Australis College Pty Ltd	386	190.7	\$988,745.43	\$2,608.98	\$986,136.45	\$2,561.52	\$5,184.82	\$2,554.76	\$5,171.14
23	7309	SMR Learning Services Pty Ltd	366	114.5	\$1,003,228.60	\$30,153.00	\$973,075.60	\$2,741.06	\$8,763.35	\$2,658.68	\$8,499.96
24	7068	Federation Training	301	208.8	\$925,403.85	\$1,292.81	\$923,702.94	\$3,074.43	\$4,433.02	\$3,068.78	\$4,424.87
25	7349	Victorian Fitness Academy Pty Ltd	197	94.5	\$923,177.94	\$0.00	\$923,177.94	\$4,686.18	\$9,769.08	\$4,686.18	\$9,769.08
26	7301	Niche Education Group Pty Ltd	187	82.6	\$1,151,660.30	\$288,980.78	\$862,679.52	\$6,158.61	\$13,946.00	\$4,613.26	\$10,446.59
27	7742	Demi International Beauty Academy Pty Ltd	171	80.5	\$873,333.98	\$72,299.62	\$801,034.36	\$5,107.22	\$10,848.87	\$4,684.41	\$9,950.74
28	7028	The Academy of Interactive Entertainment Ltd	188	105.6	\$1,839,718.00	\$1,067,765.71	\$771,952.29	\$9,785.73	\$17,415.80	\$4,106.13	\$7,307.73
29	2154	Federation University Australia	249	98.0	\$764,798.00	\$1,294.00	\$763,504.00	\$3,071.48	\$7,800.54	\$3,066.28	\$7,787.34
30	7235	Mater Education Limited	168	73.2	\$1,098,125.00	\$364,375.00	\$733,750.00	\$6,536.46	\$14,998.63	\$4,367.56	\$10,021.85
31	7145	Goulburn Ovens Institute of TAFE	215	56.9	\$673,261.60	\$200.00	\$673,061.60	\$3,131.45	\$11,828.00	\$3,130.52	\$11,824.49
32	7251	Health Skills Australia Pty Ltd	194	64.7	\$1,070,296.73	\$410,360.28	\$659,936.45	\$5,516.99	\$16,530.57	\$3,401.73	\$10,192.62
33	7382	Strategix Training Group Pty Ltd	155	72.3	\$657,720.75	\$4,067.33	\$653,653.42	\$4,243.36	\$9,094.59	\$4,217.12	\$9,038.35
34	7826	Tandem College Pty Ltd	204	74.9	\$640,552.74	\$0.00	\$640,552.74	\$3,139.96	\$8,550.96	\$3,139.96	\$8,550.96
35	3006	Australian Catholic University Limited	211	119.1	\$634,200.00	\$6,179.94	\$628,020.06	\$3,005.69	\$5,324.94	\$2,976.40	\$5,273.05
36	7142	South West Institute of TAFE	196	102.0	\$628,491.75	\$2,569.40	\$625,922.35	\$3,206.59	\$6,160.10	\$3,193.48	\$6,134.92
37	7321	Australian Institute of Fashion Design Pty Ltd	137	63.2	\$694,370.06	\$79,095.08	\$615,274.98	\$5,068.39	\$10,992.19	\$4,491.06	\$9,740.08
38	4372	Gordon Institute of TAFE	313	166.5	\$614,270.80	\$852.25	\$613,418.55	\$1,962.53	\$3,690.09	\$1,959.80	\$3,684.97
39	4336	Navitas Professional Institute Pty Ltd	209	57.3	\$822,224.00	\$237,466.14	\$584,757.86	\$3,934.09	\$14,352.09	\$2,797.88	\$10,207.07
40	7460	TasTAFE	296	158.0	\$570,966.19	\$3,839.36	\$567,126.83	\$1,928.94	\$3,613.99	\$1,915.97	\$3,589.69
41	7407	Air Gold Coast Pty. Ltd.	25	10.6	\$544,361.00	\$0.00	\$544,361.00	\$21,774.44	\$51,549.34	\$21,774.44	\$51,549.34
42	7189	Australian College of Health & Fitness Pty Ltd	129	58.3	\$536,210.81	\$0.00	\$536,210.81	\$4,156.67	\$9,192.62	\$4,156.67	\$9,192.62
43	4406	Canberra Institute of Technology	196	89.6	\$520,634.00	\$10,917.56	\$509,716.44	\$2,656.30	\$5,813.18	\$2,600.59	\$5,691.28



Rank	Provider ID	Provider name	Students	EFTSL	Tuition fees	Paid upfront	Loans paid	Tuition fees per student	Tuition fees per EFTSL	Loans per student	Loans per EFTSL
44	7143	Australian Wings Academy Pty Ltd	29	11.8	\$520,753.00	\$19,008.00	\$501,745.00	\$17,957.00	\$44,056.94	\$17,301.55	\$42,448.82
45	7118	Wodonga Institute of TAFE	195	93.2	\$440,260.50	\$1,589.00	\$438,671.50	\$2,257.75	\$4,723.39	\$2,249.60	\$4,706.35
46	7092	Australian Careers Business College Pty Ltd	154	55.0	\$416,547.85	\$1,225.00	\$415,322.85	\$2,704.86	\$7,576.35	\$2,696.90	\$7,554.07
47	4377	UOWC Ltd	87	44.7	\$589,353.94	\$176,180.06	\$413,173.88	\$6,774.18	\$13,197.20	\$4,749.13	\$9,252.06
48	7155	Australian Institute of Family Counselling Ltd	159	40.9	\$410,724.00	\$0.00	\$410,724.00	\$2,583.17	\$10,050.46	\$2,583.17	\$10,050.46
49	4371	SAE Institute Pty Limited	152	39.9	\$717,117.00	\$318,367.55	\$398,749.45	\$4,717.88	\$17,986.61	\$2,623.35	\$10,001.37
50	7023	International Film School Sydney Pty Ltd	82	59.0	\$393,337.00	\$0.00	\$393,337.00	\$4,796.79	\$6,666.73	\$4,796.79	\$6,666.73
51	7437	MVJ Enterprises Pty Ltd	93	38.0	\$413,714.00	\$32,500.00	\$381,214.00	\$4,448.54	\$10,887.21	\$4,099.08	\$10,031.95
52	7570	SEDA Group Pty Ltd	74	27.7	\$331,403.30	\$128.34	\$331,274.96	\$4,478.42	\$11,977.08	\$4,476.69	\$11,972.44
53	7131	Transformations - Pathways to Competence & Developing Excellence Pty Ltd	140	63.0	\$328,712.66	\$0.00	\$328,712.66	\$2,347.95	\$5,217.66	\$2,347.95	\$5,217.66
54	7012	Australian Education Group Pty Ltd	59	32.7	\$719,033.27	\$392,366.63	\$326,666.64	\$12,187.00	\$22,013.42	\$5,536.72	\$10,001.00
55	7306	Health Careers International Pty Ltd	149	62.7	\$729,760.62	\$404,712.05	\$325,048.57	\$4,897.72	\$11,635.51	\$2,181.53	\$5,182.67
56	2235	Edith Cowan University	169	52.9	\$316,929.10	\$0.00	\$316,929.10	\$1,875.32	\$5,996.43	\$1,875.32	\$5,996.43
57	4375	Think: Colleges Pty Ltd	91	31.3	\$513,477.17	\$201,120.53	\$312,356.64	\$5,642.61	\$16,410.53	\$3,432.49	\$9,982.79
58	7278	Royal Victorian Aero Club	13	6.8	\$306,831.66	\$0.00	\$306,831.66	\$23,602.44	\$45,456.54	\$23,602.44	\$45,456.54
59	7429	CMA Training Group Pty Ltd	91	39.6	\$303,729.67	\$0.00	\$303,729.67	\$3,337.69	\$7,679.64	\$3,337.69	\$7,679.64
60	7009	Baptist Business College Ltd	59	42.8	\$464,778.50	\$161,796.18	\$302,982.32	\$7,877.60	\$10,872.01	\$5,135.29	\$7,087.31
61	7756	Australian College of Fitness and Bodywork Pty Ltd	82	45.0	\$306,427.11	\$9,005.00	\$297,422.11	\$3,736.92	\$6,814.76	\$3,627.10	\$6,614.50
62	2148	The National Institute of Dramatic Art	35	28.1	\$447,000.00	\$157,500.00	\$289,500.00	\$12,771.43	\$15,935.83	\$8,271.43	\$10,320.86
63	8072	South Regional TAFE	97	43.8	\$285,732.35	\$0.00	\$285,732.35	\$2,945.69	\$6,517.51	\$2,945.69	\$6,517.51
64	7020	Ella Bache College Pty Ltd	82	29.0	\$335,999.94	\$60,244.71	\$275,755.23	\$4,097.56	\$11,583.01	\$3,362.87	\$9,506.18
65	4394	William Angliss Institute of TAFE	130	44.2	\$271,039.85	\$1,848.37	\$269,191.48	\$2,084.92	\$6,137.65	\$2,070.70	\$6,095.79
66	7124	Academy of Information Technology Pty Ltd	109	30.0	\$402,489.50	\$139,269.38	\$263,220.12	\$3,692.56	\$13,417.21	\$2,414.86	\$8,774.59
67	8073	Central Regional TAFE	100	48.5	\$255,600.78	\$0.00	\$255,600.78	\$2,556.01	\$5,265.85	\$2,556.01	\$5,265.85
68	7387	Cinimod Enterprises Pty Ltd	61	23.5	\$250,555.42	\$0.00	\$250,555.42	\$4,107.47	\$10,652.87	\$4,107.47	\$10,652.87
69	7372	Unity College Australia Incorporated	67	29.8	\$179,167.00	\$0.00	\$179,167.00	\$2,674.13	\$6,010.70	\$2,674.13	\$6,010.70
70	7541	Australasian Beauty Therapy Academy Pty Ltd	47	17.9	\$172,800.00	\$0.00	\$172,800.00	\$3,676.60	\$9,648.24	\$3,676.60	\$9,648.24
71	7041	Sydney Institute of Health Sciences Pty. Limited	34	12.6	\$163,230.00	\$0.00	\$163,230.00	\$4,800.88	\$12,971.54	\$4,800.88	\$12,971.54
72	7347	Design Schools Australia Pty Ltd	42	20.9	\$286,745.00	\$129,704.00	\$157,041.00	\$6,827.26	\$13,715.53	\$3,739.07	\$7,511.55
73	7465	The Mask Academy Pty Ltd	48	14.2	\$142,500.00	\$0.00	\$142,500.00	\$2,968.75	\$10,050.85	\$2,968.75	\$10,050.85
74	7102	Sunraysia Institute of TAFE	91	46.5	\$134,649.20	\$399.30	\$134,249.90	\$1,479.66	\$2,894.13	\$1,475.27	\$2,885.55
75	7091	The Health Arts College Pty Ltd	34	12.2	\$132,600.00	\$0.00	\$132,600.00	\$3,900.00	\$10,833.33	\$3,900.00	\$10,833.33
76	7197	Proteus Technologies Pty Ltd	25	18.3	\$102,950.00	\$0.00	\$102,950.00	\$4,118.00	\$5,621.38	\$4,118.00	\$5,621.38
77	7787	QIHE Pty Ltd	29	11.5	\$100,358.10	\$0.00	\$100,358.10	\$3,460.62	\$8,716.33	\$3,460.62	\$8,716.33
78	4407	Alphacrucis College Limited	25	1.3	\$99,115.00	\$0.00	\$99,115.00	\$3,964.60	\$75,516.19	\$3,964.60	\$75,516.19
79	7380	Kreate Pty Ltd	55	16.3	\$95,875.30	\$0.00	\$95,875.30	\$1,743.19	\$5,900.02	\$1,743.19	\$5,900.02
80	7262	EQUALS International (Aust) Pty Ltd	22	8.0	\$95,031.52	\$1,418.57	\$93,612.95	\$4,319.61	\$11,927.99	\$4,255.13	\$11,749.94
81	7683	The Redcliffe Aero Club	5	1.3	\$92,438.76	\$11,608.10	\$80,830.66	\$18,487.75	\$70,499.36	\$16,166.13	\$61,646.32
82	7590	Melbourne College of Hairdressing Beauty Therapy & Natural Medicine Pty Ltd as Trustee for The Melbourne College Trust	20	10.3	\$68,123.00	\$0.00	\$68,123.00	\$3,406.15	\$6,637.40	\$3,406.15	\$6,637.40
83	7363	Australian College of Event Management Pty Ltd	33	7.5	\$153,250.00	\$86,250.00	\$67,000.00	\$4,643.94	\$20,501.67	\$2,030.30	\$8,963.21
84	7701	Aurora Training Institute Pty Ltd as trustee for the Aurora Trust	30	15.5	\$65,539.41	\$0.00	\$65,539.41	\$2,184.65	\$4,225.62	\$2,184.65	\$4,225.62
85	8060	North Regional TAFE	19	9.6	\$63,104.10	\$0.00	\$63,104.10	\$3,321.27	\$6,545.93	\$3,321.27	\$6,545.93

Rank	Provider ID	Provider name	Students	EFTSL	Tuition fees	Paid upfront	Loans paid	Tuition fees per student	Tuition fees per EFTSL	Loans per student	Loans per EFTSL
86	7325	LaTrobe International Galleries Pty. Ltd.	24	6.2	\$80,503.00	\$18,507.00	\$61,996.00	\$3,354.29	\$12,977.87	\$2,583.17	\$9,994.36
87	7163	Australian National Memorial Theatre Limited	13	7.1	\$57,164.00	\$0.00	\$57,164.00	\$4,397.23	\$8,108.37	\$4,397.23	\$8,108.37
88	7646	Australian Skills Group Pty Ltd	11	3.7	\$53,750.00	\$0.00	\$53,750.00	\$4,886.36	\$14,673.76	\$4,886.36	\$14,673.76
89	7052	Melbourne Rudolf Steiner Seminar Ltd	20	10.0	\$94,000.00	\$43,168.00	\$50,832.00	\$4,700.00	\$9,400.00	\$2,541.60	\$5,083.20
90	7697	The Lady Gowrie Child Centre Melbourne Inc	14	10.0	\$48,181.65	\$0.00	\$48,181.65	\$3,441.55	\$4,804.47	\$3,441.55	\$4,804.47
91	7037	St Patrick's Business College Limited	18	9.0	\$145,938.00	\$100,188.00	\$45,750.00	\$8,107.67	\$16,215.33	\$2,541.67	\$5,083.33
92	4397	Sarina Russo Schools Australia Pty Ltd	15	3.8	\$37,350.00	\$0.00	\$37,350.00	\$2,490.00	\$9,960.00	\$2,490.00	\$9,960.00
93	7461	New England Institute of Technology Pty Ltd	14	6.0	\$36,666.57	\$0.00	\$36,666.57	\$2,619.04	\$6,100.93	\$2,619.04	\$6,100.93
94	7478	Virtu Design Institute Pty Limited	12	3.6	\$35,502.00	\$0.00	\$35,502.00	\$2,958.50	\$9,997.75	\$2,958.50	\$9,997.75
95	7784	Media Make Up Academy & Agency Pty Ltd	7	3.3	\$42,185.00	\$9,685.00	\$32,500.00	\$6,026.43	\$12,980.00	\$4,642.86	\$10,000.00
96	7276	Contour Systems Pty Ltd	6	2.7	\$33,443.00	\$6,775.00	\$26,668.00	\$5,573.83	\$12,553.68	\$4,444.67	\$10,010.51
97	7056	The Malka Group Pty. Ltd.	13	4.2	\$26,643.00	\$0.00	\$26,643.00	\$2,049.46	\$6,313.51	\$2,049.46	\$6,313.51
98	7135	Milneworth Pty Ltd	10	3.3	\$27,146.00	\$1,146.00	\$26,000.00	\$2,714.60	\$8,137.78	\$2,600.00	\$7,794.23
99	3001	Charles Darwin University	26	6.7	\$25,783.80	\$55.00	\$25,728.80	\$991.68	\$3,832.88	\$989.57	\$3,824.71
100	7108	Australian Academy of Vocational Education and Trades Pty Ltd	6	2.8	\$25,283.75	\$0.00	\$25,283.75	\$4,213.96	\$9,194.09	\$4,213.96	\$9,194.09
101	7819	Atkinson Training and Development Pty Limited	10	3.9	\$19,966.10	\$0.00	\$19,966.10	\$1,996.61	\$5,132.67	\$1,996.61	\$5,132.67
102	7280	Job Training Institute Pty Ltd	<5	2.0	\$18,333.12	\$0.00	\$18,333.12	n.p.	\$9,166.56	n.p.	\$9,166.56
103	3019	The University of Queensland	9	4.5	\$20,437.50	\$2,937.50	\$17,500.00	\$2,270.83	\$4,541.67	\$1,944.44	\$3,888.89
104	7473	LTT Group Pty Ltd	5	2.9	\$16,728.00	\$0.00	\$16,728.00	\$3,345.60	\$5,854.89	\$3,345.60	\$5,854.89
105	7661	Kiama Community College Incorporated	10	4.4	\$16,600.80	\$0.00	\$16,600.80	\$1,660.08	\$3,772.91	\$1,660.08	\$3,772.91
106	7700	Selmar Holdings Pty Ltd	6	2.3	\$20,924.00	\$6,857.45	\$14,066.55	\$3,487.33	\$8,980.26	\$2,344.43	\$6,037.15
107	7050	Headmasters Academy Pty Ltd	5	0.8	\$22,500.00	\$10,000.00	\$12,500.00	\$4,500.00	\$27,108.43	\$2,500.00	\$15,060.24
108	7479	Queensland Agricultural Training Colleges	6	1.8	\$12,444.00	\$0.00	\$12,444.00	\$2,074.00	\$6,913.33	\$2,074.00	\$6,913.33
109	7230	Foundation for Education & Training Ltd	6	1.2	\$11,848.00	\$2,420.50	\$9,427.50	\$1,974.67	\$10,005.07	\$1,571.25	\$7,961.07
110	7729	Global Training Institute Pty Ltd	<5	1.6	\$7,926.00	\$0.00	\$7,926.00	n.p.	\$5,006.00	n.p.	\$5,006.00
111	7054	Scripture Union Queensland	<5	1.0	\$7,800.00	\$0.00	\$7,800.00	n.p.	\$7,803.12	n.p.	\$7,803.12
112	8034	Envirotech Education Pty Ltd	<5	1.3	\$7,150.02	\$0.00	\$7,150.02	n.p.	\$5,363.86	n.p.	\$5,363.86
113	7485	Just Careers Training Pty Ltd	<5	1.0	\$3,846.90	\$0.00	\$3,846.90	n.p.	\$3,885.76	n.p.	\$3,885.76
114	7585	House of Learning Pty Ltd	<5	0.3	\$4,226.66	\$893.33	\$3,333.33	n.p.	\$12,681.25	n.p.	\$10,000.99
115	7080	Pharmaceutical Society of Australia Limited	<5	0.8	\$2,250.00	\$0.00	\$2,250.00	n.p.	\$3,000.00	n.p.	\$3,000.00
116	7261	The International Golf Institute Pty Ltd	<5	0.0	\$1,250.00	\$0.00	\$1,250.00	n.p.	\$500,000.00	n.p.	\$500,000.00
117	7651	HCR Constructions Pty Ltd	<5	0.2	\$1,249.98	\$0.00	\$1,249.98	n.p.	\$5,506.52	n.p.	\$5,506.52
118	3044	The University of Notre Dame Australia	<5	0.3	\$1,236.15	\$0.00	\$1,236.15	n.p.	\$4,808.05	n.p.	\$4,808.05
119	7535	Department of Training and Workforce Development	<5	0.1	\$849.05	\$0.00	\$849.05	n.p.	\$8,032.64	n.p.	\$8,032.64
		<b>Total:</b>	<b>35,197</b>	<b>15544.9</b>	<b>\$121,216,416.10</b>	<b>\$7,037,530.85</b>	<b>\$114,147,477.39</b>	<b>\$3,443.94</b>	<b>\$7,797.85</b>	<b>\$3,243.10</b>	<b>\$7,343.10</b>

**Table 4: VSL courses ordered by VSL-assisted enrolments for the period 1 July 2017 to 31 December 2017**

Rank	Course code	Course name	Enrolments	EFTSL	Tuition fees	Paid upfront	Loans paid	Tuition fees per enrolment	Tuition fees per EFTSL	Loans per enrolment	Loans per EFTSL
1	HLT54115	Diploma of Nursing	5,925	2726.4	\$22,843,680.19	\$1,800,162.79	\$21,043,517.40	\$3,855.47	\$8,378.69	\$3,551.65	\$7,718.42
2	CHC52015	Diploma of Community Services	2,451	1099.9	\$5,572,320.99	\$125,310.07	\$5,447,010.92	\$2,273.49	\$5,066.31	\$2,222.36	\$4,952.38
3	CHC50113	Diploma of Early Childhood Education and Care	2,333	1056.9	\$4,899,577.62	\$163,761.58	\$4,735,816.04	\$2,100.12	\$4,635.61	\$2,029.93	\$4,480.68
4	CUA51015	Diploma of Screen and Media	2,090	941.0	\$8,664,790.83	\$433,640.73	\$8,231,150.10	\$4,145.83	\$9,208.28	\$3,938.35	\$8,747.44
5	SHB50115	Diploma of Beauty Therapy	2,019	990.6	\$8,570,435.72	\$765,953.82	\$7,804,481.90	\$4,244.89	\$8,652.05	\$3,865.52	\$7,878.80
6	HLT52015	Diploma of Remedial Massage	993	474.7	\$3,574,541.71	\$118,184.66	\$3,456,357.05	\$3,599.74	\$7,529.87	\$3,480.72	\$7,280.91
7	BSB50215	Diploma of Business	985	299.0	\$2,286,741.85	\$151,994.61	\$2,134,747.24	\$2,321.57	\$7,647.08	\$2,167.26	\$7,138.80
8	FNS50215	Diploma of Accounting	760	204.8	\$1,256,927.99	\$64,996.95	\$1,191,931.04	\$1,653.85	\$6,137.37	\$1,568.33	\$5,820.00
9	CHC51015	Diploma of Counselling	746	255.5	\$2,193,651.20	\$183,143.04	\$2,010,508.16	\$2,940.55	\$8,585.39	\$2,695.05	\$7,868.61
10	CUA50815	Diploma of Music Industry	657	271.9	\$2,328,003.86	\$331,531.75	\$1,996,472.11	\$3,543.38	\$8,560.42	\$3,038.77	\$7,341.33
11	BSB50415	Diploma of Business Administration	607	163.9	\$1,116,020.33	\$103,278.71	\$1,012,741.62	\$1,838.58	\$6,810.55	\$1,668.44	\$6,180.29
12	CUA51115	Diploma of Visual Arts	577	223.4	\$1,955,118.70	\$77,082.64	\$1,878,036.06	\$3,388.42	\$8,750.63	\$3,254.83	\$8,405.63
13	ICT50415	Diploma of Information Technology Networking	536	265.5	\$1,990,705.77	\$59,530.46	\$1,931,175.31	\$3,714.00	\$7,496.61	\$3,602.94	\$7,272.43
14	SIS50612	Diploma of Sport Development	533	188.7	\$2,076,156.02	\$80,308.84	\$1,995,847.18	\$3,895.23	\$11,004.21	\$3,744.55	\$10,578.55
15	CHC50413	Diploma of Youth Work	522	210.3	\$1,270,636.19	\$34,255.06	\$1,236,381.13	\$2,434.17	\$6,043.05	\$2,368.55	\$5,880.13
16	CPC50210	Diploma of Building and Construction (Building)	521	317.9	\$1,405,684.88	\$2,488.09	\$1,403,196.79	\$2,698.05	\$4,422.11	\$2,693.28	\$4,414.28
17	CUA50715	Diploma of Graphic Design	502	232.1	\$1,655,748.37	\$48,514.72	\$1,607,233.65	\$3,298.30	\$7,135.00	\$3,201.66	\$6,925.94
18	BSB51915	Diploma of Leadership and Management	499	151.5	\$928,528.34	\$24,139.68	\$904,388.66	\$1,860.78	\$6,127.50	\$1,812.40	\$5,968.20
19	SIT50316	Diploma of Event Management	470	205.6	\$1,021,928.42	\$111,216.36	\$910,712.06	\$2,174.32	\$4,969.57	\$1,937.69	\$4,428.73
20	22268VIC	Advanced Diploma of Building Design (Architectural)	460	304.0	\$1,813,416.50	\$1,384.16	\$1,811,704.74	\$3,942.21	\$5,964.57	\$3,938.49	\$5,958.94
21	AVI50215	Diploma of Aviation (Commercial Pilot Licence - Aeroplane)	442	202.7	\$9,970,109.98	\$149,867.10	\$9,817,811.88	\$22,556.81	\$49,180.73	\$22,212.24	\$48,429.47
22	CPP50911	Diploma of Building Design	413	129.8	\$706,360.49	\$21,215.45	\$685,145.04	\$1,710.32	\$5,442.30	\$1,658.95	\$5,278.84
23	MSF50213	Diploma of Interior Design and Decoration	391	178.7	\$1,412,493.26	\$210,245.78	\$1,202,247.48	\$3,612.51	\$7,903.06	\$3,074.80	\$6,726.71
24	BSB50615	Diploma of Human Resources Management	362	98.7	\$592,191.34	\$5,106.20	\$587,085.14	\$1,635.89	\$6,000.28	\$1,621.78	\$5,948.54
25	CHC53315	Diploma of Mental Health	356	120.5	\$610,755.62	\$1,634.80	\$609,120.82	\$1,715.61	\$5,067.46	\$1,711.01	\$5,053.90
26	CHC50313	Diploma of Child, Youth and Family Intervention	350	147.0	\$1,172,704.82	\$152,163.95	\$1,020,540.87	\$3,350.59	\$7,975.96	\$2,915.83	\$6,941.04
27	BSB52115	Diploma of Library and Information Services	338	95.1	\$708,814.26	\$9,796.82	\$699,017.44	\$2,097.08	\$7,454.21	\$2,068.10	\$7,351.18
28	BSB52215	Diploma of Legal Services	333	112.1	\$839,271.74	\$1,575.00	\$837,696.74	\$2,520.34	\$7,484.94	\$2,515.61	\$7,470.89
29	ICT50115	Diploma of Information Technology	301	131.2	\$783,972.65	\$0.00	\$783,972.65	\$2,604.56	\$5,976.87	\$2,604.56	\$5,976.87
30	MSL50116	Diploma of Laboratory Technology	299	145.6	\$683,214.43	\$2,639.58	\$680,574.85	\$2,285.00	\$4,692.16	\$2,276.17	\$4,674.03
31	MST50116	Diploma of Applied Fashion Design and Merchandising	293	166.0	\$1,134,842.68	\$30,591.24	\$1,104,251.44	\$3,873.18	\$6,836.11	\$3,768.78	\$6,651.84
32	CUA60615	Advanced Diploma of Screen and Media	292	132.1	\$1,076,211.53	\$175,294.59	\$900,231.94	\$3,685.66	\$8,149.86	\$3,082.99	\$6,817.22
33	BSB51415	Diploma of Project Management	262	79.9	\$500,799.75	\$3,689.45	\$497,110.30	\$1,911.45	\$6,266.49	\$1,897.37	\$6,220.32
34	SIT50116	Diploma of Travel and Tourism Management	256	111.3	\$542,013.00	\$20,834.07	\$521,178.93	\$2,117.24	\$4,868.04	\$2,035.86	\$4,680.92
35	ICT50215	Diploma of Digital and Interactive Games	217	101.0	\$851,982.82	\$37,375.51	\$814,607.31	\$3,926.19	\$8,433.57	\$3,753.95	\$8,063.60
36	ICT50715	Diploma of Software Development	216	101.9	\$762,792.64	\$26,512.71	\$736,279.93	\$3,531.45	\$7,484.65	\$3,408.70	\$7,224.50
37	CUA50915	Diploma of Photography and Photo Imaging	216	88.0	\$775,195.13	\$33,451.92	\$741,743.21	\$3,588.87	\$8,804.84	\$3,434.00	\$8,424.89
38	MEM60112	Advanced Diploma of Engineering	205	114.7	\$467,355.83	\$478.11	\$466,877.72	\$2,279.78	\$4,072.99	\$2,277.45	\$4,068.82
39	AHC51116	Diploma of Conservation and Land Management	203	93.2	\$488,149.90	\$408.83	\$487,741.07	\$2,404.68	\$5,237.61	\$2,402.67	\$5,233.23
40	22228VIC	Advanced Diploma of Engineering Technology	200	103.2	\$521,751.29	\$1,423.74	\$520,327.55	\$2,608.76	\$5,057.53	\$2,601.64	\$5,043.73
41	SIT50416	Diploma of Hospitality Management	199	88.4	\$389,987.28	\$20,823.30	\$369,163.98	\$1,959.74	\$4,409.89	\$1,855.10	\$4,174.43
42	CUA60515	Advanced Diploma of Music Industry	168	87.9	\$499,610.06	\$666.00	\$498,944.06	\$2,973.87	\$5,681.16	\$2,969.91	\$5,673.59

Rank	Course code	Course name	Enrolments	EFTSL	Tuition fees	Paid upfront	Loans paid	Tuition fees per enrolment	Tuition fees per EFTSL	Loans per enrolment	Loans per EFTSL
43	FNS60215	Advanced Diploma of Accounting	166	40.2	\$254,880.52	\$5,897.73	\$248,982.79	\$1,535.42	\$6,341.37	\$1,499.90	\$6,194.63
44	CUA60315	Advanced Diploma of Graphic Design	165	78.2	\$616,891.82	\$2,891.75	\$614,000.07	\$3,738.74	\$7,890.87	\$3,721.21	\$7,853.88
45	CUA60715	Advanced Diploma of Visual Arts	162	63.8	\$468,655.55	\$2,712.00	\$465,943.55	\$2,892.94	\$7,343.79	\$2,876.19	\$7,301.29
46	SHB50216	Diploma of Salon Management	158	126.3	\$631,078.75	\$0.00	\$631,078.75	\$3,994.17	\$4,997.46	\$3,994.17	\$4,997.46
47	ICT50615	Diploma of Website Development	156	69.2	\$439,984.39	\$10,832.30	\$429,152.09	\$2,820.41	\$6,360.48	\$2,750.97	\$6,203.89
48	BSB52415	Diploma of Marketing and Communication	154	63.2	\$508,103.99	\$12,499.83	\$495,604.16	\$3,299.38	\$8,044.64	\$3,218.21	\$7,846.73
49	CHC53215	Diploma of Alcohol and Other Drugs	150	53.2	\$285,511.68	\$0.00	\$285,511.68	\$1,903.41	\$5,370.78	\$1,903.41	\$5,370.78
50	CPC60115	Advanced Diploma of Building Surveying	149	67.3	\$393,310.64	\$16,452.00	\$376,858.64	\$2,639.67	\$5,847.10	\$2,529.25	\$5,602.52
51	CUA50415	Diploma of Live Production and Technical Services	148	60.9	\$436,239.77	\$7,500.00	\$428,739.77	\$2,947.57	\$7,157.51	\$2,896.89	\$7,034.46
52	CPP50116	Diploma of Surveying	147	81.5	\$413,892.36	\$212.32	\$413,680.04	\$2,815.59	\$5,080.61	\$2,814.15	\$5,078.00
53	HLT51015	Diploma of Paramedical Science	145	43.0	\$277,277.00	\$50.00	\$277,227.00	\$1,912.60	\$6,449.72	\$1,912.26	\$6,448.56
54	FNS50615	Diploma of Financial Planning	132	68.1	\$250,003.49	\$96.55	\$249,906.94	\$1,893.97	\$3,669.02	\$1,893.23	\$3,667.61
55	10343NAT	Advanced Diploma of Professional Game Development	119	65.4	\$1,322,425.00	\$945,136.17	\$377,288.83	\$11,112.82	\$20,217.47	\$3,170.49	\$5,768.06
56	MST60116	Advanced Diploma of Applied Fashion Design and Merchandising	109	36.5	\$352,848.82	\$10.00	\$352,838.82	\$3,237.15	\$9,670.69	\$3,237.05	\$9,670.42
57	TLI50415	Diploma of Logistics	100	32.4	\$179,527.23	\$8,084.10	\$171,443.13	\$1,795.27	\$5,548.33	\$1,714.43	\$5,298.49
58	BSB61015	Advanced Diploma of Leadership and Management	95	30.1	\$192,493.57	\$1,954.80	\$190,538.77	\$2,026.25	\$6,392.71	\$2,005.67	\$6,327.80
59	PSP50916	Diploma of Interpreting (LOTE-English)	89	29.7	\$159,697.10	\$1,733.15	\$157,963.95	\$1,794.35	\$5,377.46	\$1,774.88	\$5,319.10
60	AHC50416	Diploma of Horticulture	89	26.3	\$156,108.99	\$176.00	\$155,932.99	\$1,754.03	\$5,930.74	\$1,752.06	\$5,924.06
61	MEM50212	Diploma of Engineering - Technical	87	29.4	\$192,062.57	\$648.52	\$191,414.05	\$2,207.62	\$6,535.36	\$2,200.16	\$6,513.30
62	UEE62111	Advanced Diploma of Engineering Technology - Electrical	82	37.7	\$213,351.31	\$3,554.41	\$209,796.90	\$2,601.85	\$5,654.58	\$2,558.50	\$5,560.38
63	ICT60515	Advanced Diploma of Computer Systems Technology	80	37.0	\$231,309.89	\$0.00	\$231,309.89	\$2,891.37	\$6,248.09	\$2,891.37	\$6,248.09
64	ICT60215	Advanced Diploma of Network Security	79	41.5	\$283,195.65	\$0.00	\$283,195.65	\$3,584.76	\$6,831.14	\$3,584.76	\$6,831.14
65	UEE60411	Advanced Diploma of Computer Systems Engineering	78	28.6	\$209,867.99	\$229.12	\$209,638.87	\$2,690.62	\$7,346.21	\$2,687.68	\$7,338.19
66	CHC53415	Diploma of Leisure and Health	77	39.1	\$211,804.02	\$779.63	\$211,024.39	\$2,750.70	\$5,420.17	\$2,740.58	\$5,400.22
67	AHC50616	Diploma of Landscape Design	76	29.1	\$178,631.25	\$2,216.64	\$176,414.61	\$2,350.41	\$6,141.55	\$2,321.24	\$6,065.34
68	AVI50415	Diploma of Aviation (Instrument Rating)	74	42.0	\$1,474,730.47	\$25,435.34	\$1,433,188.13	\$19,928.79	\$35,102.18	\$19,367.41	\$34,113.37
69	SIS50115	Diploma of Sport and Recreation Management	69	30.6	\$288,952.43	\$2,599.00	\$286,353.43	\$4,187.72	\$9,458.31	\$4,150.05	\$9,373.24
70	HLT55115	Diploma of Dental Technology	68	30.1	\$323,523.24	\$15,280.56	\$308,242.68	\$4,757.69	\$10,753.50	\$4,532.98	\$10,245.59
71	HLT57715	Diploma of Practice Management	67	21.6	\$102,209.50	\$1,018.63	\$101,190.87	\$1,525.51	\$4,721.87	\$1,510.31	\$4,674.81
72	MSF60113	Advanced Diploma of Interior Design	67	19.8	\$127,245.80	\$21,298.00	\$105,947.80	\$1,899.19	\$6,420.10	\$1,581.31	\$5,345.53
73	AHC50116	Diploma of Agriculture	66	18.8	\$88,755.24	\$0.00	\$88,755.24	\$1,344.78	\$4,716.93	\$1,344.78	\$4,716.93
74	FNS50315	Diploma of Finance and Mortgage Broking Management	64	28.4	\$71,578.63	\$0.00	\$71,578.63	\$1,118.42	\$2,524.82	\$1,118.42	\$2,524.82
75	SIS50310	Diploma of Outdoor Recreation	62	18.6	\$142,584.03	\$125.00	\$142,459.03	\$2,299.74	\$7,655.81	\$2,297.73	\$7,649.09
76	ICT50915	Diploma of Digital Media Technologies	60	29.5	\$151,047.97	\$0.00	\$151,047.97	\$2,517.47	\$5,120.96	\$2,517.47	\$5,120.96
77	22276VIC	Advanced Diploma of Legal Practice	57	25.0	\$174,722.10	\$428.00	\$174,294.10	\$3,065.30	\$7,000.59	\$3,057.79	\$6,983.44
78	ACM50110	Diploma of Animal Technology	56	23.8	\$135,105.92	\$0.00	\$135,105.92	\$2,412.61	\$5,677.15	\$2,412.61	\$5,677.15
79	BSB50815	Diploma of International Business	54	18.9	\$141,088.11	\$16,961.60	\$124,126.51	\$2,612.74	\$7,470.71	\$2,298.64	\$6,572.58
80	SIT60316	Advanced Diploma of Hospitality Management	50	22.9	\$113,940.12	\$7,253.91	\$106,686.21	\$2,278.80	\$4,975.25	\$2,133.72	\$4,658.50
81	CHC50213	Diploma of School Age Education and Care	49	19.5	\$89,159.85	\$1,601.00	\$87,558.85	\$1,819.59	\$4,565.58	\$1,786.92	\$4,483.60
82	10308NAT	Advanced Diploma of Professional Screenwriting	47	23.4	\$130,951.00	\$673.30	\$130,277.70	\$2,786.19	\$5,604.10	\$2,771.87	\$5,575.29
83	MEM50311	Diploma of Jewellery and Object Design	47	13.9	\$134,921.52	\$0.00	\$134,921.52	\$2,870.67	\$9,706.86	\$2,870.67	\$9,706.86
84	BSB61115	Advanced Diploma of Conveyancing	47	7.8	\$66,568.95	\$6,950.34	\$59,618.61	\$1,416.36	\$8,552.79	\$1,268.48	\$7,659.81

Rank	Course code	Course name	Enrolments	EFTSL	Tuition fees	Paid upfront	Loans paid	Tuition fees per enrolment	Tuition fees per EFTSL	Loans per enrolment	Loans per EFTSL
85	RII50515	Diploma of Civil Construction Design	43	24.0	\$78,444.91	\$0.00	\$78,444.91	\$1,824.30	\$3,266.78	\$1,824.30	\$3,266.78
86	CPP60116	Advanced Diploma of Surveying	42	24.0	\$167,983.20	\$0.00	\$167,983.20	\$3,999.60	\$7,000.88	\$3,999.60	\$7,000.88
87	ICT50315	Diploma of Information Technology Systems Administration	42	17.2	\$151,687.00	\$687.50	\$150,999.50	\$3,611.60	\$8,815.94	\$3,595.23	\$8,775.98
88	BSB51315	Diploma of Work Health and Safety	42	12.0	\$68,855.74	\$0.00	\$68,855.74	\$1,639.42	\$5,745.59	\$1,639.42	\$5,745.59
89	PSP60916	Advanced Diploma of Interpreting (LOTE-English)	41	20.5	\$89,746.20	\$369.45	\$89,376.75	\$2,188.93	\$4,369.02	\$2,179.92	\$4,351.03
90	CUA60213	Advanced Diploma of Live Production and Management Services	40	16.8	\$126,873.77	\$0.00	\$126,873.77	\$3,171.84	\$7,539.89	\$3,171.84	\$7,539.89
91	CHC51115	Diploma of Financial Counselling	37	21.8	\$104,106.80	\$179.40	\$103,927.40	\$2,813.70	\$4,767.89	\$2,808.85	\$4,759.67
92	22284VIC	Diploma of Business (Public Relations)	37	9.8	\$75,112.80	\$11,451.60	\$63,661.20	\$2,030.08	\$7,642.04	\$1,720.57	\$6,476.94
93	22091VIC	Diploma of Professional Writing and Editing	34	13.5	\$84,284.67	\$0.00	\$84,284.67	\$2,478.96	\$6,238.60	\$2,478.96	\$6,238.60
94	UEE60211	Advanced Diploma of Electronics and Communications Engineering	34	11.6	\$77,708.80	\$69.08	\$77,639.72	\$2,285.55	\$6,696.84	\$2,283.52	\$6,690.89
95	22229VIC	Diploma of Engineering Technology	34	10.8	\$57,409.82	\$0.00	\$57,409.82	\$1,688.52	\$5,310.76	\$1,688.52	\$5,310.76
96	CHC52115	Diploma of Community Development	34	10.4	\$42,142.65	\$0.00	\$42,142.65	\$1,239.49	\$4,037.04	\$1,239.49	\$4,037.04
97	UEE50511	Diploma of Electronics and Communications Engineering	33	9.1	\$79,712.19	\$912.96	\$78,799.23	\$2,415.52	\$8,741.14	\$2,387.86	\$8,641.02
98	AVI50315	Diploma of Aviation (Commercial Pilot Licence - Helicopter)	32	12.6	\$1,270,537.48	\$21,276.60	\$1,249,260.88	\$39,704.30	\$100,884.35	\$39,039.40	\$99,194.92
99	BSB60215	Advanced Diploma of Business	32	11.5	\$54,107.00	\$494.00	\$53,613.00	\$1,690.84	\$4,706.72	\$1,675.41	\$4,663.74
100	CUA51215	Diploma of Ceramics	32	8.7	\$88,763.00	\$0.00	\$88,763.00	\$2,773.84	\$10,249.77	\$2,773.84	\$10,249.77
101	CUA60415	Advanced Diploma of Creative Product Development	31	15.2	\$140,350.00	\$0.00	\$140,350.00	\$4,527.42	\$9,260.97	\$4,527.42	\$9,260.97
102	BSB52015	Diploma of Conveyancing	30	13.5	\$48,504.40	\$0.00	\$48,504.40	\$1,616.81	\$3,600.36	\$1,616.81	\$3,600.36
103	AVI50516	Diploma of Aviation (Flight Instructor)	30	11.7	\$441,996.60	\$48,052.34	\$383,385.10	\$14,733.22	\$37,685.37	\$12,779.50	\$32,688.05
104	CHC62015	Advanced Diploma of Community Sector Management	28	8.8	\$49,510.25	\$280.65	\$48,821.50	\$1,768.22	\$5,619.27	\$1,743.63	\$5,541.10
105	MEM60211	Advanced Diploma of Jewellery and Object Design	27	3.4	\$24,868.69	\$0.00	\$24,868.69	\$921.06	\$7,237.48	\$921.06	\$7,237.48
106	22260VIC	Diploma of Applied Horticultural Science	25	14.0	\$56,793.30	\$0.00	\$56,793.30	\$2,271.73	\$4,052.96	\$2,271.73	\$4,052.96
107	HLT57415	Diploma of Audiometry	24	8.7	\$46,650.94	\$2,500.00	\$44,150.94	\$1,943.79	\$5,349.88	\$1,839.62	\$5,063.18
108	TAE50216	Diploma of Training Design and Development	24	6.5	\$37,107.90	\$133.60	\$36,974.30	\$1,546.16	\$5,728.47	\$1,540.60	\$5,707.85
109	SIT60116	Advanced Diploma of Travel and Tourism Management	23	18.9	\$54,504.07	\$0.00	\$54,504.07	\$2,369.74	\$2,876.96	\$2,369.74	\$2,876.96
110	10326NAT	Diploma of Education (Aboriginal and Torres Strait Islander)	23	10.4	\$38,408.00	\$5,548.00	\$32,860.00	\$1,669.91	\$3,700.19	\$1,428.70	\$3,165.70
111	SIT60216	Advanced Diploma of Event Management	22	9.3	\$62,032.10	\$9,774.40	\$52,257.70	\$2,819.64	\$6,637.00	\$2,375.35	\$5,591.21
112	10219NAT	Diploma of Holistic Management - Sustainable Rural Lands, Business and Communities	22	9.0	\$24,273.50	\$0.00	\$24,273.50	\$1,103.34	\$2,709.10	\$1,103.34	\$2,709.10
113	SIT50216	Diploma of Holiday Park and Resort Management	21	11.3	\$21,131.22	\$0.00	\$21,131.22	\$1,006.25	\$1,877.75	\$1,006.25	\$1,877.75
114	52697WA	Diploma of Marine Studies	21	9.4	\$49,268.05	\$0.00	\$49,268.05	\$2,346.10	\$5,246.86	\$2,346.10	\$5,246.86
115	BSB60915	Advanced Diploma of Management (Human Resources)	21	8.2	\$38,103.50	\$0.00	\$38,103.50	\$1,814.45	\$4,671.49	\$1,814.45	\$4,671.49
116	BSB51615	Diploma of Quality Auditing	21	5.2	\$37,106.00	\$0.00	\$37,106.00	\$1,766.95	\$7,115.52	\$1,766.95	\$7,115.52
117	10527NAT	Advanced Diploma of Rudolf Steiner Education	20	10.0	\$94,000.00	\$43,168.00	\$50,832.00	\$4,700.00	\$9,400.00	\$2,541.60	\$5,083.20
118	ICT60315	Advanced Diploma of Information Technology Business Analysis	19	4.5	\$33,025.00	\$0.00	\$33,025.00	\$1,738.16	\$7,274.23	\$1,738.16	\$7,274.23
119	AHC51416	Diploma of Agribusiness Management	19	3.2	\$31,897.21	\$2,937.50	\$28,959.71	\$1,678.80	\$9,921.37	\$1,524.20	\$9,007.69
120	CPP50307	Diploma of Property Services (Agency Management)	18	3.5	\$33,124.00	\$7,417.99	\$25,706.01	\$1,840.22	\$9,593.65	\$1,428.11	\$7,445.19



Rank	Course code	Course name	Enrolments	EFTSL	Tuition fees	Paid upfront	Loans paid	Tuition fees per enrolment	Tuition fees per EFTSL	Loans per enrolment	Loans per EFTSL
121	CUA50213	Diploma of Musical Theatre	16	15.8	\$288,000.00	\$128,000.00	\$160,000.00	\$18,000.00	\$18,181.82	\$10,000.00	\$10,101.01
122	BSB61315	Advanced Diploma of Marketing and Communication	16	9.5	\$64,401.00	\$693.00	\$63,708.00	\$4,025.06	\$6,772.42	\$3,981.75	\$6,699.55
123	FNS50915	Diploma of Banking Services Management	16	8.7	\$50,166.34	\$0.00	\$50,166.34	\$3,135.40	\$5,762.27	\$3,135.40	\$5,762.27
124	SIR50212	Diploma of Visual Merchandising	15	8.2	\$58,970.00	\$1,793.00	\$56,287.00	\$3,931.33	\$7,181.13	\$3,752.47	\$6,854.40
125	22315VIC	Diploma of Theatre Arts	15	5.9	\$10,665.60	\$0.00	\$10,665.60	\$711.04	\$1,822.15	\$711.04	\$1,822.15
126	MSS50216	Diploma of Environmental Monitoring and Technology	15	5.5	\$29,123.19	\$0.00	\$29,123.19	\$1,941.55	\$5,253.38	\$1,941.55	\$5,253.38
127	ICT60115	Advanced Diploma of Information Technology	14	8.9	\$24,065.20	\$0.00	\$24,065.20	\$1,718.94	\$2,701.41	\$1,718.94	\$2,701.41
128	FDF50311	Diploma of Food Science and Technology	14	7.3	\$27,776.10	\$0.00	\$27,776.10	\$1,984.01	\$3,786.94	\$1,984.01	\$3,786.94
129	CHC50513	Diploma of Youth Justice	14	5.8	\$13,584.00	\$0.00	\$13,584.00	\$970.29	\$2,334.02	\$970.29	\$2,334.02
130	AHC51816	Diploma of Organic Farming	14	5.5	\$26,724.00	\$0.00	\$26,724.00	\$1,908.86	\$4,894.51	\$1,908.86	\$4,894.51
131	MEM50105	Diploma of Engineering - Advanced Trade	14	4.2	\$56,645.00	\$0.00	\$56,645.00	\$4,046.07	\$13,548.19	\$4,046.07	\$13,548.19
132	10221NAT	Advanced Diploma of Industrial Design	13	5.2	\$28,276.70	\$0.00	\$28,276.70	\$2,175.13	\$5,435.74	\$2,175.13	\$5,435.74
133	AHC52116	Diploma of Permaculture	13	4.5	\$31,798.00	\$0.00	\$31,798.00	\$2,446.00	\$7,097.77	\$2,446.00	\$7,097.77
134	10134NAT	Graduate Diploma of Counselling and Integrated Psychotherapy (Spiritual)	13	2.8	\$36,740.00	\$0.00	\$36,740.00	\$2,826.15	\$13,349.32	\$2,826.15	\$13,349.32
135	CPC50308	Diploma of Building and Construction (Management)	13	2.0	\$13,444.00	\$0.00	\$13,444.00	\$1,034.15	\$6,652.15	\$1,034.15	\$6,652.15
136	22283VIC	Advanced Diploma of Business (Public Relations)	12	2.7	\$22,274.80	\$2,019.40	\$20,255.40	\$1,856.23	\$8,247.79	\$1,687.95	\$7,500.06
137	22273VIC	Diploma of Agronomy	11	6.2	\$29,687.86	\$0.00	\$29,687.86	\$2,698.90	\$4,786.43	\$2,698.90	\$4,786.43
138	PSP60816	Advanced Diploma of Translating	11	5.1	\$30,594.45	\$0.00	\$30,594.45	\$2,781.31	\$6,016.13	\$2,781.31	\$6,016.13
139	ICT50515	Diploma of Database Design and Development	11	3.6	\$15,464.75	\$0.00	\$15,464.75	\$1,405.89	\$4,297.32	\$1,405.89	\$4,297.32
140	AHC60316	Advanced Diploma of Agribusiness Management	10	5.6	\$32,640.32	\$0.00	\$32,640.32	\$3,264.03	\$5,802.72	\$3,264.03	\$5,802.72
141	SFI50111	Diploma of Aquaculture	10	4.7	\$34,013.89	\$0.00	\$34,013.89	\$3,401.39	\$7,307.27	\$3,401.39	\$7,307.27
142	52725WA	Diploma of Civil and Structural Engineering	10	4.6	\$22,288.20	\$0.00	\$22,288.20	\$2,228.82	\$4,801.21	\$2,228.82	\$4,801.21
143	HLT65015	Advanced Diploma of Dental Prosthetics	9	4.9	\$94,988.00	\$31,604.17	\$63,383.83	\$10,554.22	\$19,229.51	\$7,042.65	\$12,831.51
144	52703WA	Advanced Diploma of Games Development	9	4.4	\$23,272.38	\$0.00	\$23,272.38	\$2,585.82	\$5,268.58	\$2,585.82	\$5,268.58
145	22308VIC	Diploma of Horse Breeding (Stud Management)	9	3.8	\$19,731.86	\$0.00	\$19,731.86	\$2,192.43	\$5,152.73	\$2,192.43	\$5,152.73
146	UEE50111	Diploma of Computer Systems Engineering	9	2.2	\$15,167.40	\$0.00	\$15,167.40	\$1,685.27	\$6,850.06	\$1,685.27	\$6,850.06
147	BSB60615	Advanced Diploma of Work Health and Safety	8	6.4	\$17,860.00	\$0.00	\$17,860.00	\$2,232.50	\$2,801.66	\$2,232.50	\$2,801.66
148	10073NAT	Advanced Diploma of Acting	8	4.8	\$36,464.00	\$0.00	\$36,464.00	\$4,558.00	\$7,596.67	\$4,558.00	\$7,596.67
149	10230NAT	Diploma of Horse Industry Management (Performance Horse)	8	2.9	\$15,591.00	\$0.00	\$15,591.00	\$1,948.88	\$5,357.73	\$1,948.88	\$5,357.73
150	MST60216	Advanced Diploma of Textile Design and Development	8	1.7	\$9,718.50	\$0.00	\$9,718.50	\$1,214.81	\$5,744.81	\$1,214.81	\$5,744.81
151	HLT50113	Diploma of Aboriginal and/or Torres Strait Islander Primary Health Care	8	0.9	\$9,791.00	\$0.00	\$9,791.00	\$1,223.88	\$10,550.65	\$1,223.88	\$10,550.65
152	CUA50513	Diploma of Live Production Design	7	5.3	\$35,000.00	\$0.00	\$35,000.00	\$5,000.00	\$6,578.95	\$5,000.00	\$6,578.95
153	22081VIC	Diploma of Auslan	7	3.5	\$14,668.95	\$0.00	\$14,668.95	\$2,095.56	\$4,163.88	\$2,095.56	\$4,163.88
154	BSB61215	Advanced Diploma of Program Management	7	3.3	\$29,250.00	\$250.00	\$29,000.00	\$4,178.57	\$8,836.86	\$4,142.86	\$8,761.33
155	10060NAT	Advanced Diploma of International Hotel and Resort Management	7	2.8	\$38,316.00	\$1,069.00	\$37,247.00	\$5,473.71	\$13,807.57	\$5,321.00	\$13,422.34
156	AHC51016	Diploma of Sports Turf Management	7	2.7	\$8,946.80	\$0.00	\$8,946.80	\$1,278.11	\$3,285.76	\$1,278.11	\$3,285.76
157	10220NAT	Diploma of Industrial Design	7	2.3	\$7,996.00	\$0.00	\$7,996.00	\$1,142.29	\$3,507.02	\$1,142.29	\$3,507.02
158	UEE62211	Advanced Diploma of Electrical - Engineering	7	2.1	\$11,248.00	\$90.00	\$11,158.00	\$1,606.86	\$5,353.64	\$1,594.00	\$5,310.80
159	AHC51516	Diploma of Viticulture	7	1.7	\$9,602.60	\$0.00	\$9,602.60	\$1,371.80	\$5,543.59	\$1,371.80	\$5,543.59
160	ICT60415	Advanced Diploma of Information Technology Project Management	7	1.4	\$8,024.00	\$0.00	\$8,024.00	\$1,146.29	\$5,650.70	\$1,146.29	\$5,650.70

Rank	Course code	Course name	Enrolments	EFTSL	Tuition fees	Paid upfront	Loans paid	Tuition fees per enrolment	Tuition fees per EFTSL	Loans per enrolment	Loans per EFTSL
161	TAE80113	Graduate Diploma of Adult Language, Literacy and Numeracy Practice	7	1.4	\$15,918.00	\$0.00	\$15,918.00	\$2,274.00	\$11,534.78	\$2,274.00	\$11,534.78
162	FNS60415	Advanced Diploma of Financial Planning	6	4.0	\$9,808.00	\$0.00	\$9,808.00	\$1,634.67	\$2,483.04	\$1,634.67	\$2,483.04
163	AHC50516	Diploma of Arboriculture	6	3.8	\$11,083.00	\$0.00	\$11,083.00	\$1,847.17	\$2,889.51	\$1,847.17	\$2,889.51
164	10453NAT	Diploma of Personal Care Formulation	6	2.0	\$19,800.00	\$0.00	\$19,800.00	\$3,300.00	\$10,000.00	\$3,300.00	\$10,000.00
165	SIS50215	Diploma of Fitness	5	2.5	\$20,800.00	\$0.00	\$20,800.00	\$4,160.00	\$8,320.00	\$4,160.00	\$8,320.00
166	CUA50113	Diploma of Dance (Elite Performance)	5	2.3	\$20,700.00	\$0.00	\$20,700.00	\$4,140.00	\$9,200.00	\$4,140.00	\$9,200.00
167	UEE50411	Diploma of Electrical Engineering	5	2.2	\$11,110.00	\$0.00	\$11,110.00	\$2,222.00	\$5,050.00	\$2,222.00	\$5,050.00
168	52694WA	Diploma of Aviation Management	5	1.9	\$12,478.65	\$0.00	\$12,478.65	\$2,495.73	\$6,612.96	\$2,495.73	\$6,612.96
169	FNS51815	Diploma of Financial Services	5	1.7	\$3,360.00	\$0.00	\$3,360.00	\$672.00	\$1,976.47	\$672.00	\$1,976.47
170	CPP50611	Diploma of Security and Risk Management	5	1.5	\$5,852.34	\$0.00	\$5,852.34	\$1,170.47	\$3,962.32	\$1,170.47	\$3,962.32
171	52809WA	Advanced Diploma of Engineering (Oil and Gas)	5	1.3	\$5,633.45	\$0.00	\$5,633.45	\$1,126.69	\$4,320.13	\$1,126.69	\$4,320.13
172	CPC50612	Diploma of Hydraulic Services Design	5	1.0	\$9,966.00	\$622.44	\$9,343.56	\$1,993.20	\$9,838.10	\$1,868.71	\$9,223.65
173	10198NAT	Graduate Certificate in Networking and Cyber Security	5	0.5	\$10,800.00	\$0.00	\$10,800.00	\$2,160.00	\$22,500.00	\$2,160.00	\$22,500.00
174	UEE51211	Diploma of Air-conditioning and Refrigeration Engineering	5	0.2	\$2,985.00	\$0.00	\$2,985.00	\$597.00	\$13,149.78	\$597.00	\$13,149.78
175	HLT57915	Diploma of Anaesthetic Technology	<5	2.2	\$17,369.00	\$2,750.20	\$14,618.80	n.p.	\$8,059.86	n.p.	\$6,783.67
176	RII60515	Advanced Diploma of Civil Construction Design	<5	2.0	\$20,777.72	\$0.00	\$20,777.72	n.p.	\$10,388.86	n.p.	\$10,388.86
177	CPC60212	Advanced Diploma of Building and Construction (Management)	<5	1.7	\$8,454.00	\$0.00	\$8,454.00	n.p.	\$4,889.53	n.p.	\$4,889.53
178	MAR50415	Diploma of Maritime Operations (Master up to 500 GT)	<5	1.7	\$25,443.47	\$3,412.00	\$22,031.47	n.p.	\$15,369.05	n.p.	\$13,308.05
179	UEE51111	Diploma of Engineering Technology - Refrigeration and Air-conditioning	<5	1.1	\$4,878.00	\$0.00	\$4,878.00	n.p.	\$4,278.95	n.p.	\$4,278.95
180	22316VIC	Advanced Diploma of Myotherapy	<5	1.7	\$15,831.75	\$0.00	\$15,831.75	n.p.	\$9,498.86	n.p.	\$9,498.86
181	52724WA	Advanced Diploma of Civil and Structural Engineering	<5	1.2	\$5,983.03	\$0.00	\$5,983.03	n.p.	\$4,958.59	n.p.	\$4,958.59
182	MAR50315	Diploma of Maritime Operations (Watchkeeper Deck)	<5	1.2	\$9,527.31	\$0.00	\$9,527.31	n.p.	\$8,140.22	n.p.	\$8,140.22
183	52760WA	Diploma of Engineering (Oil and Gas)	<5	0.7	\$3,727.33	\$0.00	\$3,727.33	n.p.	\$5,334.66	n.p.	\$5,334.66
184	ACM50512	Diploma of Veterinary Nursing (General Practice)	<5	0.6	\$5,624.00	\$0.00	\$5,624.00	n.p.	\$9,373.33	n.p.	\$9,373.33
185	PSP50116	Diploma of Government	<5	0.4	\$3,470.00	\$0.00	\$3,470.00	n.p.	\$9,378.38	n.p.	\$9,378.38
186	ICT51015	Diploma of Telecommunications Engineering	<5	1.0	\$5,060.00	\$0.00	\$5,060.00	n.p.	\$5,060.00	n.p.	\$5,060.00
187	MAR50613	Diploma of Maritime Operations (Marine Engineering Class 3 Near Coastal)	<5	0.9	\$8,698.22	\$0.00	\$8,698.22	n.p.	\$9,377.12	n.p.	\$9,377.12
188	PMA60116	Advanced Diploma of Process Plant Technology	<5	0.9	\$4,763.76	\$0.00	\$4,763.76	n.p.	\$5,191.54	n.p.	\$5,191.54
189	ICT50815	Diploma of Systems Analysis and Design	<5	0.7	\$6,034.00	\$0.00	\$6,034.00	n.p.	\$8,873.53	n.p.	\$8,873.53
190	MAR60115	Advanced Diploma of Maritime Operations (Marine Engineering Class 2)	<5	0.6	\$8,108.99	\$0.00	\$8,108.99	n.p.	\$12,893.93	n.p.	\$12,893.93
191	22267VIC	Diploma of Electrical Project Management	<5	0.5	\$1,904.00	\$0.00	\$1,904.00	n.p.	\$4,000.00	n.p.	\$4,000.00
192	MAR60315	Advanced Diploma of Maritime Operations (Master Unlimited)	<5	0.6	\$4,289.36	\$0.00	\$4,289.36	n.p.	\$6,627.56	n.p.	\$6,627.56
193	AHC60216	Advanced Diploma of Horticulture	<5	0.6	\$5,625.00	\$0.00	\$5,625.00	n.p.	\$9,000.00	n.p.	\$9,000.00
194	HLT64115	Advanced Diploma of Nursing	<5	0.6	\$1,050.00	\$0.00	\$1,050.00	n.p.	\$1,732.67	n.p.	\$1,732.67
195	CPP50216	Diploma of Spatial Information Services	<5	0.6	\$1,145.00	\$10.00	\$1,135.00	n.p.	\$2,044.64	n.p.	\$2,026.79
196	RII50915	Diploma of Underground Coal Mining Management	<5	0.5	\$2,130.00	\$0.00	\$2,130.00	n.p.	\$4,260.00	n.p.	\$4,260.00
197	MSF50313	Diploma of Furniture Design and Technology	<5	0.4	\$1,438.00	\$0.00	\$1,438.00	n.p.	\$3,784.21	n.p.	\$3,784.21

Rank	Course code	Course name	Enrolments	EFTSL	Tuition fees	Paid upfront	Loans paid	Tuition fees per enrolment	Tuition fees per EFTSL	Loans per enrolment	Loans per EFTSL
198	10263NAT	Diploma of Applied Geosciences	<5	0.3	\$2,260.00	\$0.00	\$2,260.00	n.p.	\$6,608.19	n.p.	\$6,608.19
199	PUA50513	Diploma of Public Safety (Firefighting Management)	<5	0.3	\$2,334.00	\$0.00	\$2,334.00	n.p.	\$6,864.71	n.p.	\$6,864.71
200	RII50415	Diploma of Civil Construction Management	<5	0.3	\$2,940.00	\$0.00	\$2,940.00	n.p.	\$8,820.88	n.p.	\$8,820.88
201	10180NAT	Graduate Diploma of Virtualisation Technologies	<5	0.3	\$3,878.40	\$0.00	\$3,878.40	n.p.	\$14,547.64	n.p.	\$14,547.64
202	ACM50212	Diploma of Veterinary Nursing (Surgical)	<5	0.3	\$1,950.00	\$0.00	\$1,950.00	n.p.	\$7,500.00	n.p.	\$7,500.00
203	LGA50404	Diploma of Local Government (Operational Works)	<5	0.2	\$1,372.20	\$0.00	\$1,372.20	n.p.	\$5,871.63	n.p.	\$5,871.63
204	40633SA	Advanced Diploma of Oral Health (Dental Hygiene)	<5	0.2	\$1,062.00	\$0.00	\$1,062.00	n.p.	\$5,418.37	n.p.	\$5,418.37
205	MSS50116	Diploma of Sustainable Operations	<5	0.2	\$1,316.66	\$0.00	\$1,316.66	n.p.	\$7,884.19	n.p.	\$7,884.19
206	HLT51612	Diploma of Nursing (Enrolled-Division 2 nursing)	<5	0.1	\$922.55	\$0.00	\$922.55	n.p.	\$6,362.41	n.p.	\$6,362.41
207	ACM50412	Diploma of Veterinary Nursing (Emergency and Critical Care)	<5	0.1	\$860.00	\$0.00	\$860.00	n.p.	\$6,880.00	n.p.	\$6,880.00
208	SFI50411	Diploma of Fisheries Compliance	<5	0.1	\$849.05	\$0.00	\$849.05	n.p.	\$8,032.64	n.p.	\$8,032.64
209	10052NAT	Advanced Diploma of Health Science (Soft Tissue Therapy)	<5	0.1	\$450.00	\$0.00	\$450.00	n.p.	\$4,500.00	n.p.	\$4,500.00
		<b>Total:</b>	<b>36,124</b>	<b>15544.9</b>	<b>\$121,216,416.10</b>	<b>\$7,037,530.85</b>	<b>\$114,147,477.39</b>	<b>\$3,355.56</b>	<b>\$7,797.85</b>	<b>\$3,159.88</b>	<b>\$7,343.10</b>



**Table 5: VSL courses ordered by VSL loans paid for the period 1 July 2017 to 31 December 2017**

Rank	Course code	Course name	Enrolments	EFTSL	Tuition fees	Paid upfront	Loans paid	Tuition fees per enrolment	Tuition fees per EFTSL	Loans per enrolment	Loans per EFTSL
1	HLT54115	Diploma of Nursing	5,925	2726.4	\$22,843,680.19	\$1,800,162.79	\$21,043,517.40	\$3,855.47	\$8,378.69	\$3,551.65	\$7,718.42
2	AVI50215	Diploma of Aviation (Commercial Pilot Licence - Aeroplane)	442	202.7	\$9,970,109.98	\$149,867.10	\$9,817,811.88	\$22,556.81	\$49,180.73	\$22,212.24	\$48,429.47
3	CUA51015	Diploma of Screen and Media	2,090	941.0	\$8,664,790.83	\$433,640.73	\$8,231,150.10	\$4,145.83	\$9,208.28	\$3,938.35	\$8,747.44
4	SHB50115	Diploma of Beauty Therapy	2,019	990.6	\$8,570,435.72	\$765,953.82	\$7,804,481.90	\$4,244.89	\$8,652.05	\$3,865.52	\$7,878.80
5	CHC52015	Diploma of Community Services	2,451	1099.9	\$5,572,320.99	\$125,310.07	\$5,447,010.92	\$2,273.49	\$5,066.31	\$2,222.36	\$4,952.38
6	CHC50113	Diploma of Early Childhood Education and Care	2,333	1056.9	\$4,899,577.62	\$163,761.58	\$4,735,816.04	\$2,100.12	\$4,635.61	\$2,029.93	\$4,480.68
7	HLT52015	Diploma of Remedial Massage	993	474.7	\$3,574,541.71	\$118,184.66	\$3,456,357.05	\$3,599.74	\$7,529.87	\$3,480.72	\$7,280.91
8	BSB50215	Diploma of Business	985	299.0	\$2,286,741.85	\$151,994.61	\$2,134,747.24	\$2,321.57	\$7,647.08	\$2,167.26	\$7,138.80
9	CHC51015	Diploma of Counselling	746	255.5	\$2,193,651.20	\$183,143.04	\$2,010,508.16	\$2,940.55	\$8,585.39	\$2,695.05	\$7,868.61
10	CUA50815	Diploma of Music Industry	657	271.9	\$2,328,003.86	\$331,531.75	\$1,996,472.11	\$3,543.38	\$8,560.42	\$3,038.77	\$7,341.33
11	SIS50612	Diploma of Sport Development	533	188.7	\$2,076,156.02	\$80,308.84	\$1,995,847.18	\$3,895.23	\$11,004.21	\$3,744.55	\$10,578.55
12	ICT50415	Diploma of Information Technology Networking	536	265.5	\$1,990,705.77	\$59,530.46	\$1,931,175.31	\$3,714.00	\$7,496.61	\$3,602.94	\$7,272.43
13	CUA51115	Diploma of Visual Arts	577	223.4	\$1,955,118.70	\$77,082.64	\$1,878,036.06	\$3,388.42	\$8,750.63	\$3,254.83	\$8,405.63
14	22268VIC	Advanced Diploma of Building Design (Architectural)	460	304.0	\$1,813,416.50	\$1,384.16	\$1,811,704.74	\$3,942.21	\$5,964.57	\$3,938.49	\$5,958.94
15	CUA50715	Diploma of Graphic Design	502	232.1	\$1,655,748.37	\$48,514.72	\$1,607,233.65	\$3,298.30	\$7,135.00	\$3,201.66	\$6,925.94
16	AVI50415	Diploma of Aviation (Instrument Rating)	74	42.0	\$1,474,730.47	\$25,435.34	\$1,433,188.13	\$19,928.79	\$35,102.18	\$19,367.41	\$34,113.37
17	CPC50210	Diploma of Building and Construction (Building)	521	317.9	\$1,405,684.88	\$2,488.09	\$1,403,196.79	\$2,698.05	\$4,422.11	\$2,693.28	\$4,414.28
18	AVI50315	Diploma of Aviation (Commercial Pilot Licence - Helicopter)	32	12.6	\$1,270,537.48	\$21,276.60	\$1,249,260.88	\$39,704.30	\$100,884.35	\$39,039.40	\$99,194.92
19	CHC50413	Diploma of Youth Work	522	210.3	\$1,270,636.19	\$34,255.06	\$1,236,381.13	\$2,434.17	\$6,043.05	\$2,368.55	\$5,880.13
20	MSF50213	Diploma of Interior Design and Decoration	391	178.7	\$1,412,493.26	\$210,245.78	\$1,202,247.48	\$3,612.51	\$7,903.06	\$3,074.80	\$6,726.71
21	FNS50215	Diploma of Accounting	760	204.8	\$1,256,927.99	\$64,996.95	\$1,191,931.04	\$1,653.85	\$6,137.37	\$1,568.33	\$5,820.00
22	MST50116	Diploma of Applied Fashion Design and Merchandising	293	166.0	\$1,134,842.68	\$30,591.24	\$1,104,251.44	\$3,873.18	\$6,836.11	\$3,768.78	\$6,651.84
23	CHC50313	Diploma of Child, Youth and Family Intervention	350	147.0	\$1,172,704.82	\$152,163.95	\$1,020,540.87	\$3,350.59	\$7,975.96	\$2,915.83	\$6,941.04
24	BSB50415	Diploma of Business Administration	607	163.9	\$1,116,020.33	\$103,278.71	\$1,012,741.62	\$1,838.58	\$6,810.55	\$1,668.44	\$6,180.29
25	SIT50316	Diploma of Event Management	470	205.6	\$1,021,928.42	\$111,216.36	\$910,712.06	\$2,174.32	\$4,969.57	\$1,937.69	\$4,428.73
26	BSB51915	Diploma of Leadership and Management	499	151.5	\$928,528.34	\$24,139.68	\$904,388.66	\$1,860.78	\$6,127.50	\$1,812.40	\$5,968.20
27	CUA60615	Advanced Diploma of Screen and Media	292	132.1	\$1,076,211.53	\$175,294.59	\$900,231.94	\$3,685.66	\$8,149.86	\$3,082.99	\$6,817.22
28	BSB52215	Diploma of Legal Services	333	112.1	\$839,271.74	\$1,575.00	\$837,696.74	\$2,520.34	\$7,484.94	\$2,515.61	\$7,470.89
29	ICT50215	Diploma of Digital and Interactive Games	217	101.0	\$851,982.82	\$37,375.51	\$814,607.31	\$3,926.19	\$8,433.57	\$3,753.95	\$8,063.60
30	ICT50115	Diploma of Information Technology	301	131.2	\$783,972.65	\$0.00	\$783,972.65	\$2,604.56	\$5,976.87	\$2,604.56	\$5,976.87
31	CUA50915	Diploma of Photography and Photo Imaging	216	88.0	\$775,195.13	\$33,451.92	\$741,743.21	\$3,588.87	\$8,804.84	\$3,434.00	\$8,424.89
32	ICT50715	Diploma of Software Development	216	101.9	\$762,792.64	\$26,512.71	\$736,279.93	\$3,531.45	\$7,484.65	\$3,408.70	\$7,224.50
33	BSB52115	Diploma of Library and Information Services	338	95.1	\$708,814.26	\$9,796.82	\$699,017.44	\$2,097.08	\$7,454.21	\$2,068.10	\$7,351.18
34	CPP50911	Diploma of Building Design	413	129.8	\$706,360.49	\$21,215.45	\$685,145.04	\$1,710.32	\$5,442.30	\$1,658.95	\$5,278.84
35	MSL50116	Diploma of Laboratory Technology	299	145.6	\$683,214.43	\$2,639.58	\$680,574.85	\$2,285.00	\$4,692.16	\$2,276.17	\$4,674.03
36	SHB50216	Diploma of Salon Management	158	126.3	\$631,078.75	\$0.00	\$631,078.75	\$3,994.17	\$4,997.46	\$3,994.17	\$4,997.46
37	CUA60315	Advanced Diploma of Graphic Design	165	78.2	\$616,891.82	\$2,891.75	\$614,000.07	\$3,738.74	\$7,890.87	\$3,721.21	\$7,853.88
38	CHC53315	Diploma of Mental Health	356	120.5	\$610,755.62	\$1,634.80	\$609,120.82	\$1,715.61	\$5,067.46	\$1,711.01	\$5,053.90
39	BSB50615	Diploma of Human Resources Management	362	98.7	\$592,191.34	\$5,106.20	\$587,085.14	\$1,635.89	\$6,000.28	\$1,621.78	\$5,948.54
40	SIT50116	Diploma of Travel and Tourism Management	256	111.3	\$542,013.00	\$20,834.07	\$521,178.93	\$2,117.24	\$4,868.04	\$2,035.86	\$4,680.92
41	22228VIC	Advanced Diploma of Engineering Technology	200	103.2	\$521,751.29	\$1,423.74	\$520,327.55	\$2,608.76	\$5,057.53	\$2,601.64	\$5,043.73

Rank	Course code	Course name	Enrolments	EFTSL	Tuition fees	Paid upfront	Loans paid	Tuition fees per enrolment	Tuition fees per EFTSL	Loans per enrolment	Loans per EFTSL
42	CUA60515	Advanced Diploma of Music Industry	168	87.9	\$499,610.06	\$666.00	\$498,944.06	\$2,973.87	\$5,681.16	\$2,969.91	\$5,673.59
43	BSB51415	Diploma of Project Management	262	79.9	\$500,799.75	\$3,689.45	\$497,110.30	\$1,911.45	\$6,266.49	\$1,897.37	\$6,220.32
44	BSB52415	Diploma of Marketing and Communication	154	63.2	\$508,103.99	\$12,499.83	\$495,604.16	\$3,299.38	\$8,044.64	\$3,218.21	\$7,846.73
45	AHC51116	Diploma of Conservation and Land Management	203	93.2	\$488,149.90	\$408.83	\$487,741.07	\$2,404.68	\$5,237.61	\$2,402.67	\$5,233.23
46	MEM60112	Advanced Diploma of Engineering	205	114.7	\$467,355.83	\$478.11	\$466,877.72	\$2,279.78	\$4,072.99	\$2,277.45	\$4,068.82
47	CUA60715	Advanced Diploma of Visual Arts	162	63.8	\$468,655.55	\$2,712.00	\$465,943.55	\$2,892.94	\$7,343.79	\$2,876.19	\$7,301.29
48	ICT50615	Diploma of Website Development	156	69.2	\$439,984.39	\$10,832.30	\$429,152.09	\$2,820.41	\$6,360.48	\$2,750.97	\$6,203.89
49	CUA50415	Diploma of Live Production and Technical Services	148	60.9	\$436,239.77	\$7,500.00	\$428,739.77	\$2,947.57	\$7,157.51	\$2,896.89	\$7,034.46
50	CPP50116	Diploma of Surveying	147	81.5	\$413,892.36	\$212.32	\$413,680.04	\$2,815.59	\$5,080.61	\$2,814.15	\$5,078.00
51	AVI50516	Diploma of Aviation (Flight Instructor)	30	11.7	\$441,996.60	\$48,052.34	\$383,385.10	\$14,733.22	\$37,685.37	\$12,779.50	\$32,688.05
52	10343NAT	Advanced Diploma of Professional Game Development	119	65.4	\$1,322,425.00	\$945,136.17	\$377,288.83	\$11,112.82	\$20,217.47	\$3,170.49	\$5,768.06
53	CPC60115	Advanced Diploma of Building Surveying	149	67.3	\$393,310.64	\$16,452.00	\$376,858.64	\$2,639.67	\$5,847.10	\$2,529.25	\$5,602.52
54	SIT50416	Diploma of Hospitality Management	199	88.4	\$389,987.28	\$20,823.30	\$369,163.98	\$1,959.74	\$4,409.89	\$1,855.10	\$4,174.43
55	MST60116	Advanced Diploma of Applied Fashion Design and Merchandising	109	36.5	\$352,848.82	\$10.00	\$352,838.82	\$3,237.15	\$9,670.69	\$3,237.05	\$9,670.42
56	HLT55115	Diploma of Dental Technology	68	30.1	\$323,523.24	\$15,280.56	\$308,242.68	\$4,757.69	\$10,753.50	\$4,532.98	\$10,245.59
57	SIS50115	Diploma of Sport and Recreation Management	69	30.6	\$288,952.43	\$2,599.00	\$286,353.43	\$4,187.72	\$9,458.31	\$4,150.05	\$9,373.24
58	CHC53215	Diploma of Alcohol and Other Drugs	150	53.2	\$285,511.68	\$0.00	\$285,511.68	\$1,903.41	\$5,370.78	\$1,903.41	\$5,370.78
59	ICT60215	Advanced Diploma of Network Security	79	41.5	\$283,195.65	\$0.00	\$283,195.65	\$3,584.76	\$6,831.14	\$3,584.76	\$6,831.14
60	HLT51015	Diploma of Paramedical Science	145	43.0	\$277,327.00	\$50.00	\$277,277.00	\$1,912.60	\$6,449.72	\$1,912.26	\$6,448.56
61	FNS50615	Diploma of Financial Planning	132	68.1	\$250,003.49	\$96.55	\$249,906.94	\$1,893.97	\$3,669.02	\$1,893.23	\$3,667.61
62	FNS60215	Advanced Diploma of Accounting	166	40.2	\$254,880.52	\$5,897.73	\$248,982.79	\$1,535.42	\$6,341.37	\$1,499.90	\$6,194.63
63	ICT60515	Advanced Diploma of Computer Systems Technology	80	37.0	\$231,309.89	\$0.00	\$231,309.89	\$2,891.37	\$6,248.09	\$2,891.37	\$6,248.09
64	CHC53415	Diploma of Leisure and Health	77	39.1	\$211,804.02	\$779.63	\$211,024.39	\$2,750.70	\$5,420.17	\$2,740.58	\$5,400.22
65	UEE62111	Advanced Diploma of Engineering Technology - Electrical	82	37.7	\$213,351.31	\$3,554.41	\$209,796.90	\$2,601.85	\$5,654.58	\$2,558.50	\$5,560.38
66	UEE60411	Advanced Diploma of Computer Systems Engineering	78	28.6	\$209,867.99	\$229.12	\$209,638.87	\$2,690.62	\$7,346.21	\$2,687.68	\$7,338.19
67	MEM50212	Diploma of Engineering - Technical	87	29.4	\$192,062.57	\$648.52	\$191,414.05	\$2,207.62	\$6,535.36	\$2,200.16	\$6,513.30
68	BSB61015	Advanced Diploma of Leadership and Management	95	30.1	\$192,493.57	\$1,954.80	\$190,538.77	\$2,026.25	\$6,392.71	\$2,005.67	\$6,327.80
69	AHC50616	Diploma of Landscape Design	76	29.1	\$178,631.25	\$2,216.64	\$176,414.61	\$2,350.41	\$6,141.55	\$2,321.24	\$6,065.34
70	22276VIC	Advanced Diploma of Legal Practice	57	25.0	\$174,722.10	\$428.00	\$174,294.10	\$3,065.30	\$7,000.59	\$3,057.79	\$6,983.44
71	TLI50415	Diploma of Logistics	100	32.4	\$179,527.23	\$8,084.10	\$171,443.13	\$1,795.27	\$5,548.33	\$1,714.43	\$5,298.49
72	CPP60116	Advanced Diploma of Surveying	42	24.0	\$167,983.20	\$0.00	\$167,983.20	\$3,999.60	\$7,000.88	\$3,999.60	\$7,000.88
73	CUA50213	Diploma of Musical Theatre	16	15.8	\$288,000.00	\$128,000.00	\$160,000.00	\$18,000.00	\$18,181.82	\$10,000.00	\$10,101.01
74	PSP50916	Diploma of Interpreting (LOTE-English)	89	29.7	\$159,697.10	\$1,733.15	\$157,963.95	\$1,794.35	\$5,377.46	\$1,774.88	\$5,319.10
75	AHC50416	Diploma of Horticulture	89	26.3	\$156,108.99	\$176.00	\$155,932.99	\$1,754.03	\$5,930.74	\$1,752.06	\$5,924.06
76	ICT50915	Diploma of Digital Media Technologies	60	29.5	\$151,047.97	\$0.00	\$151,047.97	\$2,517.47	\$5,120.96	\$2,517.47	\$5,120.96
77	ICT50315	Diploma of Information Technology Systems Administration	42	17.2	\$151,687.00	\$687.50	\$150,999.50	\$3,611.60	\$8,815.94	\$3,595.23	\$8,775.98
78	SIS50310	Diploma of Outdoor Recreation	62	18.6	\$142,584.03	\$125.00	\$142,459.03	\$2,299.74	\$7,655.81	\$2,297.73	\$7,649.09
79	CUA60415	Advanced Diploma of Creative Product Development	31	15.2	\$140,350.00	\$0.00	\$140,350.00	\$4,527.42	\$9,260.97	\$4,527.42	\$9,260.97
80	ACM50110	Diploma of Animal Technology	56	23.8	\$135,105.92	\$0.00	\$135,105.92	\$2,412.61	\$5,677.15	\$2,412.61	\$5,677.15
81	MEM50311	Diploma of Jewellery and Object Design	47	13.9	\$134,921.52	\$0.00	\$134,921.52	\$2,870.67	\$9,706.86	\$2,870.67	\$9,706.86
82	10308NAT	Advanced Diploma of Professional Screenwriting	47	23.4	\$130,951.00	\$673.30	\$130,277.70	\$2,786.19	\$5,604.10	\$2,771.87	\$5,575.29
83	CUA60213	Advanced Diploma of Live Production and	40	16.8	\$126,873.77	\$0.00	\$126,873.77	\$3,171.84	\$7,539.89	\$3,171.84	\$7,539.89

Rank	Course code	Course name	Enrolments	EFTSL	Tuition fees	Paid upfront	Loans paid	Tuition fees per enrolment	Tuition fees per EFTSL	Loans per enrolment	Loans per EFTSL
		Management Services									
84	BSB50815	Diploma of International Business	54	18.9	\$141,088.11	\$16,961.60	\$124,126.51	\$2,612.74	\$7,470.71	\$2,298.64	\$6,572.58
85	SIT60316	Advanced Diploma of Hospitality Management	50	22.9	\$113,940.12	\$7,253.91	\$106,686.21	\$2,278.80	\$4,975.25	\$2,133.72	\$4,658.50
86	MSF60113	Advanced Diploma of Interior Design	67	19.8	\$127,245.80	\$21,298.00	\$105,947.80	\$1,899.19	\$6,420.10	\$1,581.31	\$5,345.53
87	CHC51115	Diploma of Financial Counselling	37	21.8	\$104,106.80	\$179.40	\$103,927.40	\$2,813.70	\$4,767.89	\$2,808.85	\$4,759.67
88	HLT57715	Diploma of Practice Management	67	21.6	\$102,209.50	\$1,018.63	\$101,190.87	\$1,525.51	\$4,721.87	\$1,510.31	\$4,674.81
89	PSP60916	Advanced Diploma of Interpreting (LOTE-English)	41	20.5	\$89,746.20	\$369.45	\$89,376.75	\$2,188.93	\$4,369.02	\$2,179.92	\$4,351.03
90	CUA51215	Diploma of Ceramics	32	8.7	\$88,763.00	\$0.00	\$88,763.00	\$2,773.84	\$10,249.77	\$2,773.84	\$10,249.77
91	AHC50116	Diploma of Agriculture	66	18.8	\$88,755.24	\$0.00	\$88,755.24	\$1,344.78	\$4,716.93	\$1,344.78	\$4,716.93
92	CHC50213	Diploma of School Age Education and Care	49	19.5	\$89,159.85	\$1,601.00	\$87,558.85	\$1,819.59	\$4,565.58	\$1,786.92	\$4,483.60
93	22091VIC	Diploma of Professional Writing and Editing	34	13.5	\$84,284.67	\$0.00	\$84,284.67	\$2,478.96	\$6,238.60	\$2,478.96	\$6,238.60
94	UEE50511	Diploma of Electronics and Communications Engineering	33	9.1	\$79,712.19	\$912.96	\$78,799.23	\$2,415.52	\$8,741.14	\$2,387.86	\$8,641.02
95	RII50515	Diploma of Civil Construction Design	43	24.0	\$78,444.91	\$0.00	\$78,444.91	\$1,824.30	\$3,266.78	\$1,824.30	\$3,266.78
96	UEE60211	Advanced Diploma of Electronics and Communications Engineering	34	11.6	\$77,708.80	\$69.08	\$77,639.72	\$2,285.55	\$6,696.84	\$2,283.52	\$6,690.89
97	FNS50315	Diploma of Finance and Mortgage Broking Management	64	28.4	\$71,578.63	\$0.00	\$71,578.63	\$1,118.42	\$2,524.82	\$1,118.42	\$2,524.82
98	BSB51315	Diploma of Work Health and Safety	42	12.0	\$68,855.74	\$0.00	\$68,855.74	\$1,639.42	\$5,745.59	\$1,639.42	\$5,745.59
99	BSB61315	Advanced Diploma of Marketing and Communication	16	9.5	\$64,401.00	\$693.00	\$63,708.00	\$4,025.06	\$6,772.42	\$3,981.75	\$6,699.55
100	22284VIC	Diploma of Business (Public Relations)	37	9.8	\$75,112.80	\$11,451.60	\$63,661.20	\$2,030.08	\$7,642.04	\$1,720.57	\$6,476.94
101	HLT65015	Advanced Diploma of Dental Prosthetics	9	4.9	\$94,988.00	\$31,604.17	\$63,383.83	\$10,554.22	\$19,229.51	\$7,042.65	\$12,831.51
102	BSB61115	Advanced Diploma of Conveyancing	47	7.8	\$66,568.95	\$6,950.34	\$59,618.61	\$1,416.36	\$8,552.79	\$1,268.48	\$7,659.81
103	22229VIC	Diploma of Engineering Technology	34	10.8	\$57,409.82	\$0.00	\$57,409.82	\$1,688.52	\$5,310.76	\$1,688.52	\$5,310.76
104	22260VIC	Diploma of Applied Horticultural Science	25	14.0	\$56,793.30	\$0.00	\$56,793.30	\$2,271.73	\$4,052.96	\$2,271.73	\$4,052.96
105	MEM50105	Diploma of Engineering - Advanced Trade	14	4.2	\$56,645.00	\$0.00	\$56,645.00	\$4,046.07	\$13,548.19	\$4,046.07	\$13,548.19
106	SIR50212	Diploma of Visual Merchandising	15	8.2	\$58,970.00	\$1,793.00	\$56,287.00	\$3,931.33	\$7,181.13	\$3,752.47	\$6,854.40
107	SIT60116	Advanced Diploma of Travel and Tourism Management	23	18.9	\$54,504.07	\$0.00	\$54,504.07	\$2,369.74	\$2,876.96	\$2,369.74	\$2,876.96
108	BSB60215	Advanced Diploma of Business	32	11.5	\$54,107.00	\$494.00	\$53,613.00	\$1,690.84	\$4,706.72	\$1,675.41	\$4,663.74
109	SIT60216	Advanced Diploma of Event Management	22	9.3	\$62,032.10	\$9,774.40	\$52,257.70	\$2,819.64	\$6,637.00	\$2,375.35	\$5,591.21
110	10527NAT	Advanced Diploma of Rudolf Steiner Education	20	10.0	\$94,000.00	\$43,168.00	\$50,832.00	\$4,700.00	\$9,400.00	\$2,541.60	\$5,083.20
111	FNS50915	Diploma of Banking Services Management	16	8.7	\$50,166.34	\$0.00	\$50,166.34	\$3,135.40	\$5,762.27	\$3,135.40	\$5,762.27
112	52697WA	Diploma of Marine Studies	21	9.4	\$49,268.05	\$0.00	\$49,268.05	\$2,346.10	\$5,246.86	\$2,346.10	\$5,246.86
113	CHC62015	Advanced Diploma of Community Sector Management	28	8.8	\$49,510.25	\$280.65	\$48,221.50	\$1,768.22	\$5,619.27	\$1,743.63	\$5,541.10
114	BSB52015	Diploma of Conveyancing	30	13.5	\$48,504.40	\$0.00	\$48,504.40	\$1,616.81	\$3,600.36	\$1,616.81	\$3,600.36
115	HLT57415	Diploma of Audiometry	24	8.7	\$46,650.94	\$2,500.00	\$44,150.94	\$1,943.79	\$5,349.88	\$1,839.62	\$5,063.18
116	CHC52115	Diploma of Community Development	34	10.4	\$42,142.65	\$0.00	\$42,142.65	\$1,239.49	\$4,037.04	\$1,239.49	\$4,037.04
117	BSB60915	Advanced Diploma of Management (Human Resources)	21	8.2	\$38,103.50	\$0.00	\$38,103.50	\$1,814.45	\$4,671.49	\$1,814.45	\$4,671.49
118	10060NAT	Advanced Diploma of International Hotel and Resort Management	7	2.8	\$38,316.00	\$1,069.00	\$37,247.00	\$5,473.71	\$13,807.57	\$5,321.00	\$13,422.34
119	BSB51615	Diploma of Quality Auditing	21	5.2	\$37,106.00	\$0.00	\$37,106.00	\$1,766.95	\$7,115.52	\$1,766.95	\$7,115.52
120	TAE50216	Diploma of Training Design and Development	24	6.5	\$37,107.90	\$133.60	\$36,974.30	\$1,546.16	\$5,728.47	\$1,540.60	\$5,707.85
121	10134NAT	Graduate Diploma of Counselling and Integrated Psychotherapy (Spiritual)	13	2.8	\$36,740.00	\$0.00	\$36,740.00	\$2,826.15	\$13,349.32	\$2,826.15	\$13,349.32

Rank	Course code	Course name	Enrolments	EFTSL	Tuition fees	Paid upfront	Loans paid	Tuition fees per enrolment	Tuition fees per EFTSL	Loans per enrolment	Loans per EFTSL
122	10073NAT	Advanced Diploma of Acting	8	4.8	\$36,464.00	\$0.00	\$36,464.00	\$4,558.00	\$7,596.67	\$4,558.00	\$7,596.67
123	CUA50513	Diploma of Live Production Design	7	5.3	\$35,000.00	\$0.00	\$35,000.00	\$5,000.00	\$6,578.95	\$5,000.00	\$6,578.95
124	SFI50111	Diploma of Aquaculture	10	4.7	\$34,013.89	\$0.00	\$34,013.89	\$3,401.39	\$7,307.27	\$3,401.39	\$7,307.27
125	ICT60315	Advanced Diploma of Information Technology Business Analysis	19	4.5	\$33,025.00	\$0.00	\$33,025.00	\$1,738.16	\$7,274.23	\$1,738.16	\$7,274.23
126	10326NAT	Diploma of Education (Aboriginal and Torres Strait Islander)	23	10.4	\$38,408.00	\$5,548.00	\$32,860.00	\$1,669.91	\$3,700.19	\$1,428.70	\$3,165.70
127	AHC60316	Advanced Diploma of Agribusiness Management	10	5.6	\$32,640.32	\$0.00	\$32,640.32	\$3,264.03	\$5,802.72	\$3,264.03	\$5,802.72
128	AHC52116	Diploma of Permaculture	13	4.5	\$31,798.00	\$0.00	\$31,798.00	\$2,446.00	\$7,097.77	\$2,446.00	\$7,097.77
129	PSP60816	Advanced Diploma of Translating	11	5.1	\$30,594.45	\$0.00	\$30,594.45	\$2,781.31	\$6,016.13	\$2,781.31	\$6,016.13
130	22273VIC	Diploma of Agronomy	11	6.2	\$29,687.86	\$0.00	\$29,687.86	\$2,698.90	\$4,786.43	\$2,698.90	\$4,786.43
131	MSS50216	Diploma of Environmental Monitoring and Technology	15	5.5	\$29,123.19	\$0.00	\$29,123.19	\$1,941.55	\$5,253.38	\$1,941.55	\$5,253.38
132	BSB61215	Advanced Diploma of Program Management	7	3.3	\$29,250.00	\$250.00	\$29,000.00	\$4,178.57	\$8,836.86	\$4,142.86	\$8,761.33
133	AHC51416	Diploma of Agribusiness Management	19	3.2	\$31,897.21	\$2,937.50	\$28,959.71	\$1,678.80	\$9,921.37	\$1,524.20	\$9,007.69
134	10221NAT	Advanced Diploma of Industrial Design	13	5.2	\$28,276.70	\$0.00	\$28,276.70	\$2,175.13	\$5,435.74	\$2,175.13	\$5,435.74
135	FD50311	Diploma of Food Science and Technology	14	7.3	\$27,776.10	\$0.00	\$27,776.10	\$1,984.01	\$3,786.94	\$1,984.01	\$3,786.94
136	AHC51816	Diploma of Organic Farming	14	5.5	\$26,724.00	\$0.00	\$26,724.00	\$1,908.86	\$4,894.51	\$1,908.86	\$4,894.51
137	CPP50307	Diploma of Property Services (Agency Management)	18	3.5	\$33,124.00	\$7,417.99	\$25,706.01	\$1,840.22	\$9,593.65	\$1,428.11	\$7,445.19
138	MEM60211	Advanced Diploma of Jewellery and Object Design	27	3.4	\$24,868.69	\$0.00	\$24,868.69	\$921.06	\$7,237.48	\$921.06	\$7,237.48
139	10219NAT	Diploma of Holistic Management - Sustainable Rural Lands, Business and Communities	22	9.0	\$24,273.50	\$0.00	\$24,273.50	\$1,103.34	\$2,709.10	\$1,103.34	\$2,709.10
140	ICT60115	Advanced Diploma of Information Technology	14	8.9	\$24,065.20	\$0.00	\$24,065.20	\$1,718.94	\$2,701.41	\$1,718.94	\$2,701.41
141	52703WA	Advanced Diploma of Games Development	9	4.4	\$23,272.38	\$0.00	\$23,272.38	\$2,585.82	\$5,268.58	\$2,585.82	\$5,268.58
142	52725WA	Diploma of Civil and Structural Engineering	10	4.6	\$22,288.20	\$0.00	\$22,288.20	\$2,228.82	\$4,801.21	\$2,228.82	\$4,801.21
143	MAR50415	Diploma of Maritime Operations (Master up to 500 GT)	<5	1.7	\$25,443.47	\$3,412.00	\$22,031.47	n.p.	\$15,369.05	n.p.	\$13,308.05
144	SIT50216	Diploma of Holiday Park and Resort Management	21	11.3	\$21,131.22	\$0.00	\$21,131.22	\$1,006.25	\$1,877.75	\$1,006.25	\$1,877.75
145	SIS50215	Diploma of Fitness	5	2.5	\$20,800.00	\$0.00	\$20,800.00	\$4,160.00	\$8,320.00	\$4,160.00	\$8,320.00
146	RII60515	Advanced Diploma of Civil Construction Design	<5	2.0	\$20,777.72	\$0.00	\$20,777.72	n.p.	\$10,388.86	n.p.	\$10,388.86
147	CUA50113	Diploma of Dance (Elite Performance)	5	2.3	\$20,700.00	\$0.00	\$20,700.00	\$4,140.00	\$9,200.00	\$4,140.00	\$9,200.00
148	22283VIC	Advanced Diploma of Business (Public Relations)	12	2.7	\$22,274.80	\$2,019.40	\$20,255.40	\$1,856.23	\$8,247.79	\$1,687.95	\$7,500.06
149	10453NAT	Diploma of Personal Care Formulation	6	2.0	\$19,800.00	\$0.00	\$19,800.00	\$3,300.00	\$10,000.00	\$3,300.00	\$10,000.00
150	22308VIC	Diploma of Horse Breeding (Stud Management)	9	3.8	\$19,731.86	\$0.00	\$19,731.86	\$2,192.43	\$5,152.73	\$2,192.43	\$5,152.73
151	BSB60615	Advanced Diploma of Work Health and Safety	8	6.4	\$17,860.00	\$0.00	\$17,860.00	\$2,232.50	\$2,801.66	\$2,232.50	\$2,801.66
152	TAE80113	Graduate Diploma of Adult Language, Literacy and Numeracy Practice	7	1.4	\$15,918.00	\$0.00	\$15,918.00	\$2,274.00	\$11,534.78	\$2,274.00	\$11,534.78
153	22316VIC	Advanced Diploma of Myotherapy	<5	1.7	\$15,831.75	\$0.00	\$15,831.75	n.p.	\$9,498.86	n.p.	\$9,498.86
154	10230NAT	Diploma of Horse Industry Management (Performance Horse)	8	2.9	\$15,591.00	\$0.00	\$15,591.00	\$1,948.88	\$5,357.73	\$1,948.88	\$5,357.73
155	ICT50515	Diploma of Database Design and Development	11	3.6	\$15,464.75	\$0.00	\$15,464.75	\$1,405.89	\$4,297.32	\$1,405.89	\$4,297.32
156	UEE50111	Diploma of Computer Systems Engineering	9	2.2	\$15,167.40	\$0.00	\$15,167.40	\$1,685.27	\$6,850.06	\$1,685.27	\$6,850.06
157	22081VIC	Diploma of Auslan	7	3.5	\$14,668.95	\$0.00	\$14,668.95	\$2,095.56	\$4,163.88	\$2,095.56	\$4,163.88
158	HLT57915	Diploma of Anaesthetic Technology	<5	2.2	\$17,369.00	\$2,750.20	\$14,618.80	n.p.	\$8,059.86	n.p.	\$6,783.67
159	CHC50513	Diploma of Youth Justice	14	5.8	\$13,584.00	\$0.00	\$13,584.00	\$970.29	\$2,334.02	\$970.29	\$2,334.02
160	CPC50308	Diploma of Building and Construction (Management)	13	2.0	\$13,444.00	\$0.00	\$13,444.00	\$1,034.15	\$6,652.15	\$1,034.15	\$6,652.15
161	52694WA	Diploma of Aviation Management	5	1.9	\$12,478.65	\$0.00	\$12,478.65	\$2,495.73	\$6,612.96	\$2,495.73	\$6,612.96

Rank	Course code	Course name	Enrolments	EFTSL	Tuition fees	Paid upfront	Loans paid	Tuition fees per enrolment	Tuition fees per EFTSL	Loans per enrolment	Loans per EFTSL
162	UEE62211	Advanced Diploma of Electrical - Engineering	7	2.1	\$11,248.00	\$90.00	\$11,158.00	\$1,606.86	\$5,353.64	\$1,594.00	\$5,310.80
163	UEE50411	Diploma of Electrical Engineering	5	2.2	\$11,110.00	\$0.00	\$11,110.00	\$2,222.00	\$5,050.00	\$2,222.00	\$5,050.00
164	AHC50516	Diploma of Arboriculture	6	3.8	\$11,083.00	\$0.00	\$11,083.00	\$1,847.17	\$2,889.51	\$1,847.17	\$2,889.51
165	10198NAT	Graduate Certificate in Networking and Cyber Security	5	0.5	\$10,800.00	\$0.00	\$10,800.00	\$2,160.00	\$22,500.00	\$2,160.00	\$22,500.00
166	22315VIC	Diploma of Theatre Arts	15	5.9	\$10,665.60	\$0.00	\$10,665.60	\$711.04	\$1,822.15	\$711.04	\$1,822.15
167	FNS60415	Advanced Diploma of Financial Planning	6	4.0	\$9,808.00	\$0.00	\$9,808.00	\$1,634.67	\$2,483.04	\$1,634.67	\$2,483.04
168	HLT50113	Diploma of Aboriginal and/or Torres Strait Islander Primary Health Care	8	0.9	\$9,791.00	\$0.00	\$9,791.00	\$1,223.88	\$10,550.65	\$1,223.88	\$10,550.65
169	MST60216	Advanced Diploma of Textile Design and Development	8	1.7	\$9,718.50	\$0.00	\$9,718.50	\$1,214.81	\$5,744.81	\$1,214.81	\$5,744.81
170	AHC51516	Diploma of Viticulture	7	1.7	\$9,602.60	\$0.00	\$9,602.60	\$1,371.80	\$5,543.59	\$1,371.80	\$5,543.59
171	MAR50315	Diploma of Maritime Operations (Watchkeeper Deck)	<5	1.2	\$9,527.31	\$0.00	\$9,527.31	n.p.	\$8,140.22	n.p.	\$8,140.22
172	CPC50612	Diploma of Hydraulic Services Design	5	1.0	\$9,966.00	\$622.44	\$9,343.56	\$1,993.20	\$9,838.10	\$1,868.71	\$9,223.65
173	AHC51016	Diploma of Sports Turf Management	7	2.7	\$8,946.80	\$0.00	\$8,946.80	\$1,278.11	\$3,285.76	\$1,278.11	\$3,285.76
174	MAR50613	Diploma of Maritime Operations (Marine Engineering Class 3 Near Coastal)	<5	0.9	\$8,698.22	\$0.00	\$8,698.22	n.p.	\$9,377.12	n.p.	\$9,377.12
175	CPC60212	Advanced Diploma of Building and Construction (Management)	<5	1.7	\$8,454.00	\$0.00	\$8,454.00	n.p.	\$4,889.53	n.p.	\$4,889.53
176	MAR60115	Advanced Diploma of Maritime Operations (Marine Engineering Class 2)	<5	0.6	\$8,108.99	\$0.00	\$8,108.99	n.p.	\$12,893.93	n.p.	\$12,893.93
177	ICT60415	Advanced Diploma of Information Technology Project Management	7	1.4	\$8,024.00	\$0.00	\$8,024.00	\$1,146.29	\$5,650.70	\$1,146.29	\$5,650.70
178	10220NAT	Diploma of Industrial Design	7	2.3	\$7,996.00	\$0.00	\$7,996.00	\$1,142.29	\$3,507.02	\$1,142.29	\$3,507.02
179	ICT50815	Diploma of Systems Analysis and Design	<5	0.7	\$6,034.00	\$0.00	\$6,034.00	n.p.	\$8,873.53	n.p.	\$8,873.53
180	52724WA	Advanced Diploma of Civil and Structural Engineering	<5	1.2	\$5,983.03	\$0.00	\$5,983.03	n.p.	\$4,958.59	n.p.	\$4,958.59
181	CPP50611	Diploma of Security and Risk Management	5	1.5	\$5,852.34	\$0.00	\$5,852.34	\$1,170.47	\$3,962.32	\$1,170.47	\$3,962.32
182	52809WA	Advanced Diploma of Engineering (Oil and Gas)	5	1.3	\$5,633.45	\$0.00	\$5,633.45	\$1,126.69	\$4,320.13	\$1,126.69	\$4,320.13
183	AHC60216	Advanced Diploma of Horticulture	<5	0.6	\$5,625.00	\$0.00	\$5,625.00	n.p.	\$9,000.00	n.p.	\$9,000.00
184	ACM50512	Diploma of Veterinary Nursing (General Practice)	<5	0.6	\$5,624.00	\$0.00	\$5,624.00	n.p.	\$9,373.33	n.p.	\$9,373.33
185	ICT51015	Diploma of Telecommunications Engineering	<5	1.0	\$5,060.00	\$0.00	\$5,060.00	n.p.	\$5,060.00	n.p.	\$5,060.00
186	UEE51111	Diploma of Engineering Technology - Refrigeration and Air-conditioning	<5	1.1	\$4,878.00	\$0.00	\$4,878.00	n.p.	\$4,278.95	n.p.	\$4,278.95
187	PMA60116	Advanced Diploma of Process Plant Technology	<5	0.9	\$4,763.76	\$0.00	\$4,763.76	n.p.	\$5,191.54	n.p.	\$5,191.54
188	MAR60315	Advanced Diploma of Maritime Operations (Master Unlimited)	<5	0.6	\$4,289.36	\$0.00	\$4,289.36	n.p.	\$6,627.56	n.p.	\$6,627.56
189	10180NAT	Graduate Diploma of Virtualisation Technologies	<5	0.3	\$3,878.40	\$0.00	\$3,878.40	n.p.	\$14,547.64	n.p.	\$14,547.64
190	52760WA	Diploma of Engineering (Oil and Gas)	<5	0.7	\$3,727.33	\$0.00	\$3,727.33	n.p.	\$5,334.66	n.p.	\$5,334.66
191	PSP50116	Diploma of Government	<5	0.4	\$3,470.00	\$0.00	\$3,470.00	n.p.	\$9,378.38	n.p.	\$9,378.38
192	FNS51815	Diploma of Financial Services	5	1.7	\$3,360.00	\$0.00	\$3,360.00	\$672.00	\$1,976.47	\$672.00	\$1,976.47
193	UEE51211	Diploma of Air-conditioning and Refrigeration Engineering	5	0.2	\$2,985.00	\$0.00	\$2,985.00	\$597.00	\$13,149.78	\$597.00	\$13,149.78
194	RII50415	Diploma of Civil Construction Management	<5	0.3	\$2,940.00	\$0.00	\$2,940.00	n.p.	\$8,820.88	n.p.	\$8,820.88
195	PUA50513	Diploma of Public Safety (Firefighting Management)	<5	0.3	\$2,334.00	\$0.00	\$2,334.00	n.p.	\$6,864.71	n.p.	\$6,864.71
196	10263NAT	Diploma of Applied Geosciences	<5	0.3	\$2,260.00	\$0.00	\$2,260.00	n.p.	\$6,608.19	n.p.	\$6,608.19
197	RII50915	Diploma of Underground Coal Mining Management	<5	0.5	\$2,130.00	\$0.00	\$2,130.00	n.p.	\$4,260.00	n.p.	\$4,260.00

Rank	Course code	Course name	Enrolments	EFTSL	Tuition fees	Paid upfront	Loans paid	Tuition fees per enrolment	Tuition fees per EFTSL	Loans per enrolment	Loans per EFTSL
198	ACM50212	Diploma of Veterinary Nursing (Surgical)	<5	0.3	\$1,950.00	\$0.00	\$1,950.00	n.p.	\$7,500.00	n.p.	\$7,500.00
199	22267VIC	Diploma of Electrical Project Management	<5	0.5	\$1,904.00	\$0.00	\$1,904.00	n.p.	\$4,000.00	n.p.	\$4,000.00
200	MSF50313	Diploma of Furniture Design and Technology	<5	0.4	\$1,438.00	\$0.00	\$1,438.00	n.p.	\$3,784.21	n.p.	\$3,784.21
201	LGA50404	Diploma of Local Government (Operational Works)	<5	0.2	\$1,372.20	\$0.00	\$1,372.20	n.p.	\$5,871.63	n.p.	\$5,871.63
202	MSS50116	Diploma of Sustainable Operations	<5	0.2	\$1,316.66	\$0.00	\$1,316.66	n.p.	\$7,884.19	n.p.	\$7,884.19
203	CPP50216	Diploma of Spatial Information Services	<5	0.6	\$1,145.00	\$10.00	\$1,135.00	n.p.	\$2,044.64	n.p.	\$2,026.79
204	40633SA	Advanced Diploma of Oral Health (Dental Hygiene)	<5	0.2	\$1,062.00	\$0.00	\$1,062.00	n.p.	\$5,418.37	n.p.	\$5,418.37
205	HLT64115	Advanced Diploma of Nursing	<5	0.6	\$1,050.00	\$0.00	\$1,050.00	n.p.	\$1,732.67	n.p.	\$1,732.67
206	HLT51612	Diploma of Nursing (Enrolled-Division 2 nursing)	<5	0.1	\$922.55	\$0.00	\$922.55	n.p.	\$6,362.41	n.p.	\$6,362.41
207	ACM50412	Diploma of Veterinary Nursing (Emergency and Critical Care)	<5	0.1	\$860.00	\$0.00	\$860.00	n.p.	\$6,880.00	n.p.	\$6,880.00
208	SFI50411	Diploma of Fisheries Compliance	<5	0.1	\$849.05	\$0.00	\$849.05	n.p.	\$8,032.64	n.p.	\$8,032.64
209	10052NAT	Advanced Diploma of Health Science (Soft Tissue Therapy)	<5	0.1	\$450.00	\$0.00	\$450.00	n.p.	\$4,500.00	n.p.	\$4,500.00
		<b>Total:</b>	<b>36,124</b>	<b>15544.9</b>	<b>\$121,216,416.10</b>	<b>\$7,037,530.85</b>	<b>\$114,147,477.39</b>	<b>\$3,355.56</b>	<b>\$7,797.85</b>	<b>\$3,159.88</b>	<b>\$7,343.10</b>