



Australian Government
Department of Employment

Employment Services Outcomes Report

JULY 2015 – JUNE 2016

INDEX

Key Observations	2
What is jobactive?	3
jobactive	4
How do you become part of jobactive?	
Beginning in jobactive	5
Jobactive tailoring assistance to the individual	6
Services and assistance delivered to job seekers	7
Getting a job	8
Work for the Dole and other Activities	10
Leaving jobactive	12
Employment following jobactive assistance	14
Outcome measures and definitions	16

KEY OBSERVATIONS - JULY 2015 TO JUNE 2016

Around 760,000 job seekers transitioned to jobactive on 1 July 2015 with a further 520,000 job seekers commencing in the year to 30 June 2016.

- 47.5 per cent of job seekers are in Stream A,
- 34.7 per cent of job seekers are in Stream B,
- 17.8 per cent of job seekers are in Stream C.

48.1 per cent of job seekers participating in jobactive between 1 July 2015 and 30 June 2016 are in employment three months later.

- 57.9 per cent of Stream A job seekers are employed three months after participating in jobactive,
- 39.4 per cent of Stream B job seekers are employed three months after participating in jobactive,
- 26.3 per cent of Stream C job seekers are employed three months after participating in jobactive.

Of the job seekers who are employed:

- 21.1 per cent were in full time employment,
- 27.0 per cent were in part time employments,
- 53.9 per cent were in casual employment.

More than 350,000 job placements were recorded between 1 July 2015 and 30 June 2016 with:

- 58.4 per cent leading to a paid 4 week outcome,
- 50.2 per cent leading to a paid 12 week outcome,
- 32.7 per cent leading to a paid 26 week outcome.

Survey data demonstrates that during the 1 July 2015 and 30 June 2016 period:

- 35.4 per cent of job seekers are employed three months after exiting a training activity,
- 30.0 per cent of job seekers are employed three months after exiting a Work for the Dole activity,
- 32.0 per cent of job seekers are employed three months after exiting a Voluntary Work activity.

Job seekers report that participation in Work for the Dole improved their soft skills:

- 72.4 per cent reported it increased their desire to find a job,
- 75.1 per cent reported it increased their ability to adapt to a new environment,
- 69.5 per cent reported it improved their ability to keep to a routine,
- 69.2 per cent reported it improved their communication skills.



jobactive is the Australian Government's way of helping more Australians into work. It is an employment program that connects job seekers to employers, and is delivered in over 1,700 locations across Australia.

The Department of Employment monitors what happens to job seekers in jobactive through the Post-Program Monitoring (PPM) surveys. These surveys measure a range of items such as a job seeker's labour market status, and their satisfaction with various aspects of employment services.

This report describes the experiences of job seekers in jobactive, using information from the Department's administration databases and the PPM surveys.

jobactive began on 1 July 2015 and replaced the previous employment services model, Job Services Australia.



jobactive

The Government, through the Department of Employment, contracts organisations across Australia to be the face of the jobactive program and to directly assist people into sustainable employment. These organisations are called providers.

Providers help job seekers in jobactive by providing assistance and advice to help progress them on their journey towards employment.

PROVIDERS DO THIS BY



HOW DO YOU BECOME PART OF JOBACTIVE?

Generally, a job seeker will start in jobactive when they first apply for income support (such as Newstart or Youth Allowance). Some income support payments have conditions, and a job seeker has to participate in jobactive to meet them.

Some job seekers may not have to participate in jobactive, but may volunteer to participate in jobactive for up to 6 months.

In 2015-16, more than 650,000 job seekers were referred to jobactive.

Beginning in jobactive

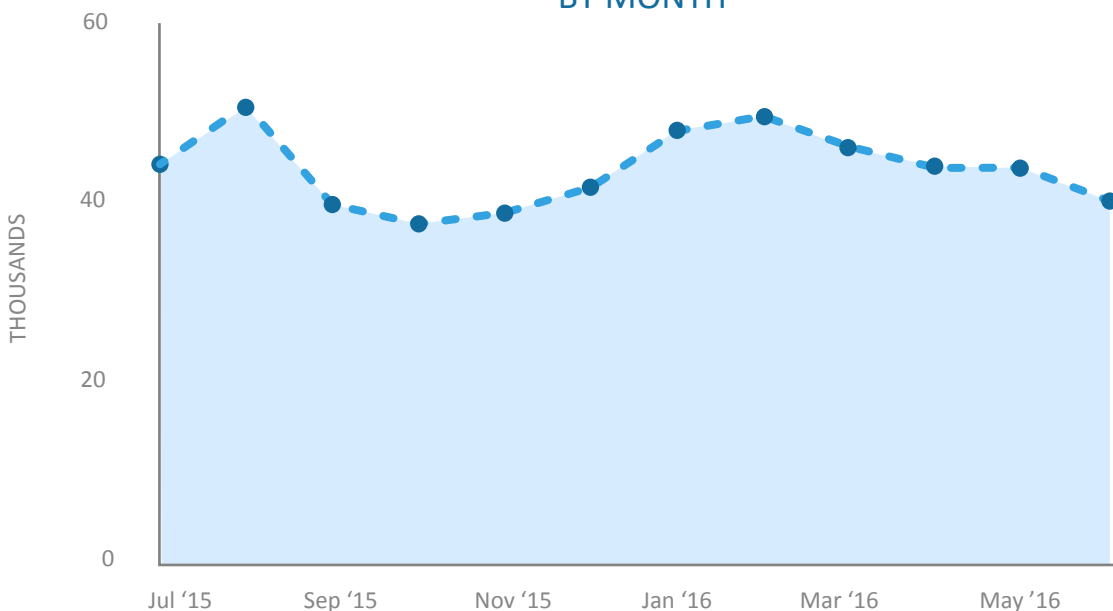
A job seeker will start in jobactive by attending an initial appointment with their jobactive provider. The job seeker and the provider will agree on a job plan – a road map for the job seeker to progress towards employment.

Around 760,000 job seekers were transitioned across from the previous employment services model (Job Services Australia) on 1 July 2015.

In addition, around 520,000 more people across Australia commenced in jobactive between 1 July 2015 and 30 June 2016.

There is usually an increase in commencements over the Christmas to New Year period, as many people leave school or university and enter the job market.

NUMBER OF JOB SEEKERS COMMENCING IN JOBACTIVE BY MONTH¹



¹ Data as at 30 June 2016

jobactive tailors assistance to the individual

Once a job seeker starts in jobactive, their barriers to employment are assessed using a Job Seeker Classification Instrument (JSCI), a questionnaire the job seeker and the Department of Human Services will fill out together. Sometimes, an additional assessment is required, called an Employment Services Assessment (ESAt). This additional assessment helps to identify job seekers with additional barriers to employment who may benefit from more intensive support in Stream C.

Job seekers are allocated to one of three streams, based on their JSCI score and the kinds of barriers they are likely to face in obtaining employment.

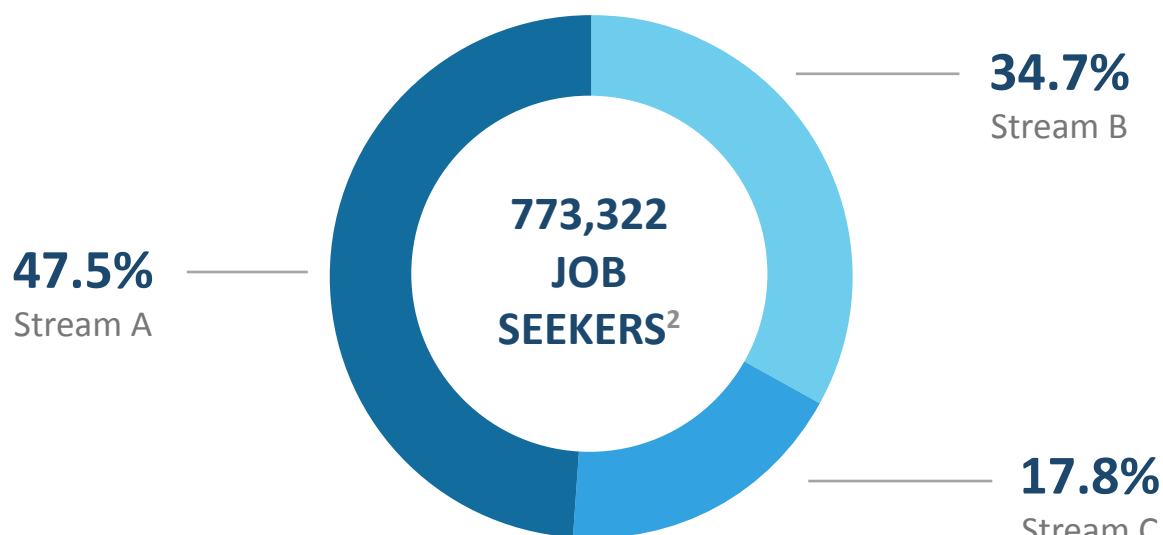
- **Stream A** job seekers are the most job ready. They comprise around

47.5 per cent of job seekers in jobactive.

Volunteer job seekers receive services through Stream A for up to six months.

- **Stream B** job seekers face some barriers to employment (for example, language barriers), and require their provider to play a greater role to help them become job ready. Stream B job seekers make up around 34.7 per cent of all job seekers.
- The most disadvantaged job seekers identified through the ESAt are assisted through **Stream C**, comprising around 17.8 per cent of jobactive job seekers.

Stream C job seekers have multiple and complex barriers that need to be addressed so that they can take up and retain a job. These may include physical and/or mental health issues or low capacity to work.



² Data as at 30 June 2016



Services and assistance delivered to job seekers

Providers deliver assistance to job seekers based on their individual needs and their Stream. Jobactive providers assist job seekers with their search to find and keep a job such as providing advice or assisting with their resume, as well as helping them meet their participation obligations, and overcome any vocational or non-vocational barriers to employment.

jobactive providers help job seekers to

Find and keep a job

- Develop a job plan
- Develop and write a résumé
- Prepare for job interviews
- Gain access to computers
- Get referrals to job vacancies
- Develop skills that local employers need
- Access wage subsidies

Overcome vocational and non-vocational barriers

- Provide work-related items, professional services, relevant training and support for job seekers
- Provide additional intensive support services such as counselling, homeless services, mental health services, and other medical treatments

Meet participation obligations

- Look for up to 20 jobs per month
- Attend regular appointments
- Undertake activities that will help develop skills local employers are looking for



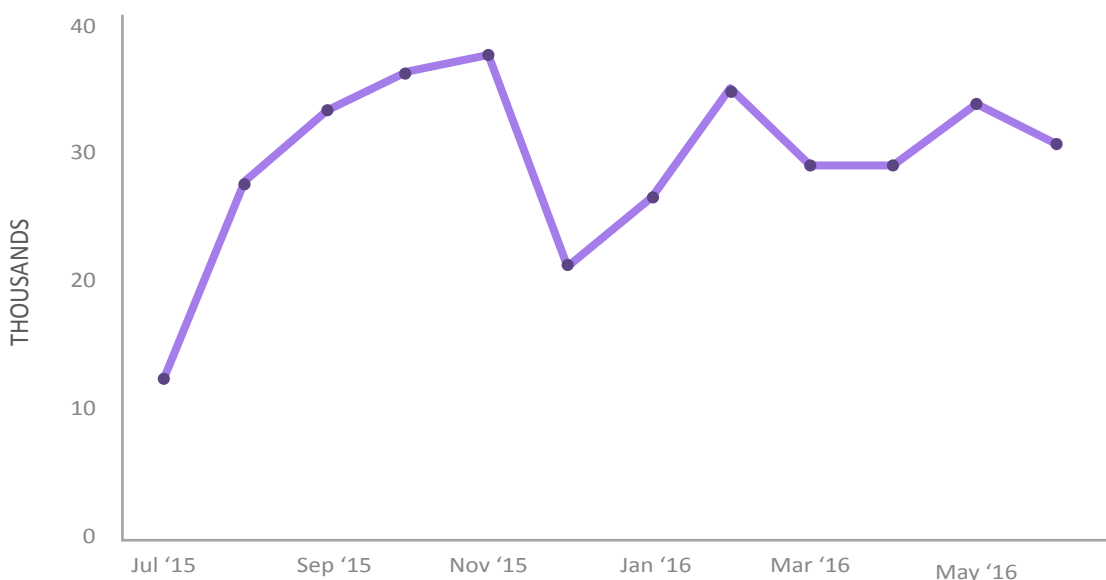
Getting a job

A key component of jobactive is placing job seekers into employment. When a job seeker finds a job, whether on their own or with assistance from their provider, that job is called a 'job placement'.

More than 350,000 job placements were recorded in jobactive during 2015-16. Providers receive payments called outcome fees, paid by the Department of Employment, for helping a job seeker into a job. There are three main types of outcome fees:

- If a job seeker is placed in a job, remains employed for four weeks, and reduces their income support payments by at least 60 per cent, the provider receives a four week outcome payment (paid outcome).
- The provider receives a 12 week outcome payment if the job seeker remains employed for 12 weeks and continues to have reduced their income support payments by at least 60 per cent.
- Finally, a provider receives a 26 week outcome payment if the job seeker remains employed for 26 weeks and reduces their reliance on income support by 100 per cent.

NUMBER OF JOB SEEKERS PLACED IN A JOB BY MONTH³



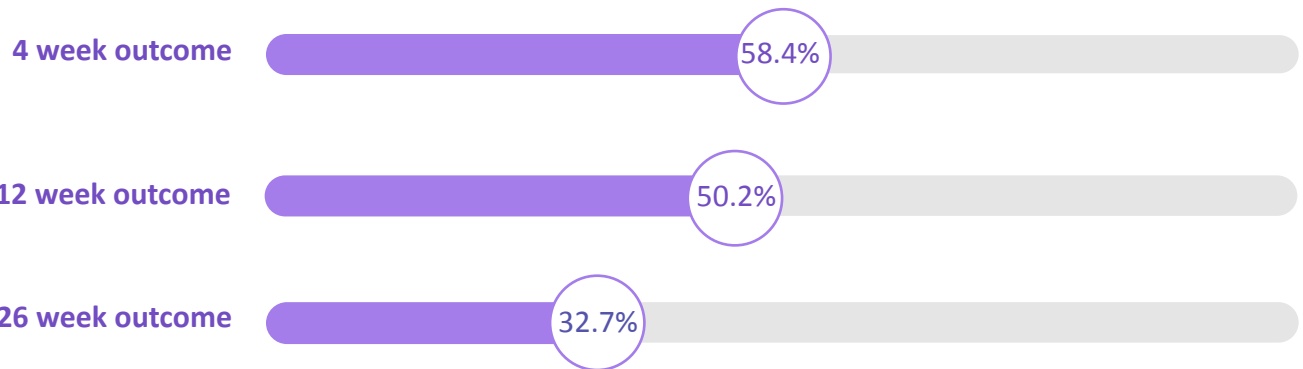
³Data as at 30 June 2016

KEEPING A JOB - PAID OUTCOMES

The rate at which job placements convert to paid outcomes gives an indication of whether job seekers are keeping their job. They are a measure of sustainable employment.

In 2015-16:

- 58.4 per cent of job placements led to a 60 per cent reduction in income support and a paid four week outcome
- 50.2 per cent of job placements led to a 60 per cent reduction in income support and a paid 12 week outcome
- 32.7 per cent of job placements led to 100 per cent income support reduction and a paid 26 week outcome



78.5%
Employment 3 months
post job placement
(Survey Data)

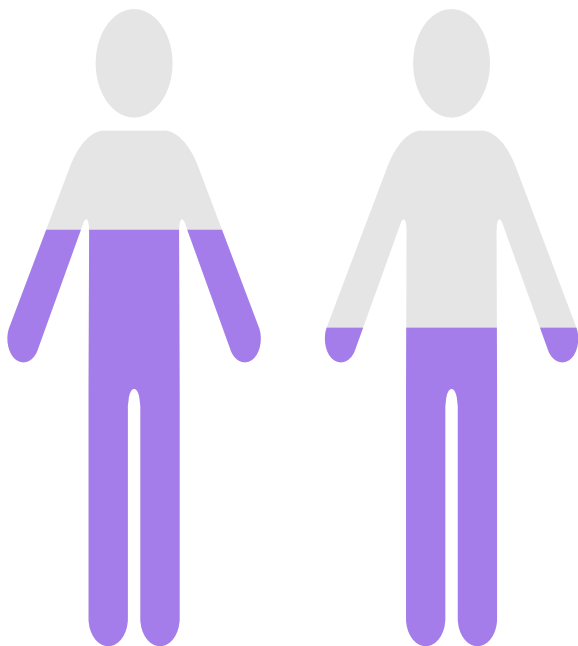
50.2%⁴
12 week
Outcome

KEEPING A JOB

Conversion rates and paid outcomes are not the only indication a job seeker is employed. The PPM job placement survey contacts job seekers who commenced in a job placement three months after commencement.

Survey results show 78.5 per cent of job seekers are employed three months after commencing in a job placement. Yet only 50.2 per cent of these job placements led to a paid 12 week outcome.

This is because job seekers may be employed in a different job, or the employment or job placement does not meet the conditions for a paid outcome. The employment may be temporary or have insufficient hours to reduce a job seeker's reliance on income support by at least 60 per cent.



⁴ Data as at 30 June 2016

Work for the Dole and other Activities

Not all job seekers go straight into employment. Some undertake mutual obligation activities to get them closer to work. These activities aim to improve job seekers' soft skills.

Work for the Dole (WfD) activities are aimed at developing soft skills and empowering job seekers through work experience and teamwork, while also giving back to the community that supports them. Other activities may include part-time work, vocational training or work experience placements.

ACTIVITIES⁵

Between 1 July 2015 and 30 June 2016, there were more than 600,000 commencements in activities.

The highest number of activity commencements were recorded for part time employment, with 34.8 per cent of total commencements.

Almost a third of activity commencements were in accredited education and training activities and 22.1 per cent of commencements were in Work for the Dole activities.

Part Time Employment



Accredited Education and Training



Work for the Dole



Other

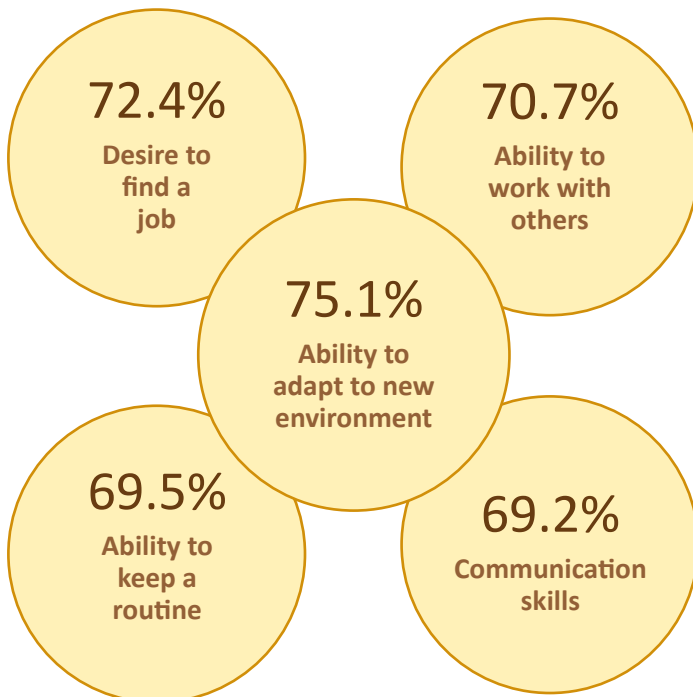


⁵ Data as at 30 June 2016

EMPLOYMENT FOLLOWING ACTIVITIES

Survey data shows that during the period 1 July 2015 to 30 June 2016:

- 35.4 per cent of job seekers are employed, three months after they exited a training activity
- 30.0 per cent of job seekers are employed, three months after they exited a WfD activity
- 32.0 per cent of job seekers are employed, three months after they exited a Voluntary Work activity



JOB SEEKERS REPORT PARTICIPATION IN WORK FOR THE DOLE HAS A POSITIVE IMPACT ON THEIR SOFT SKILLS

Job seekers reported that their soft skills improved as a result of taking part in a Work for the Dole activity.

The most commonly improved soft skills are shown in the graph opposite. For example, 75.1 per cent of job seekers reported an improvement in their ability to adapt to a new environment.



Leaving jobactive

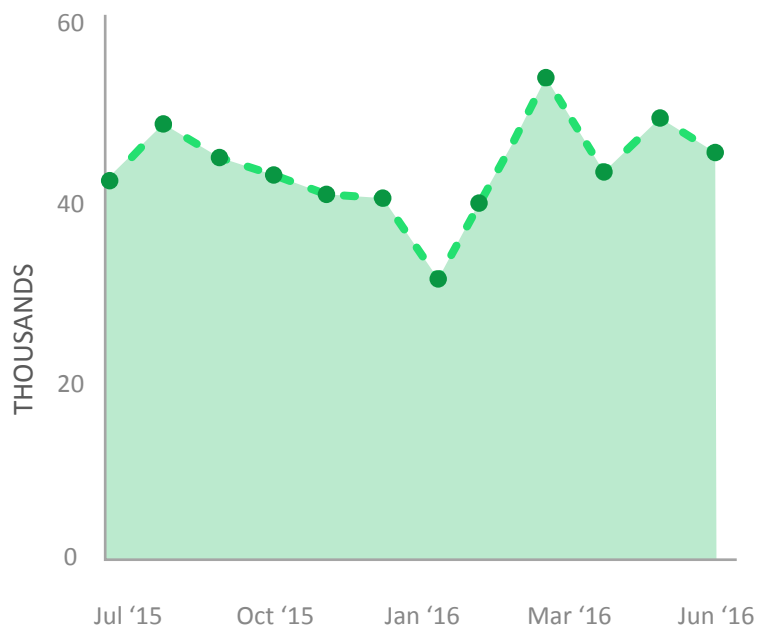
Job seekers exit the jobactive program when they leave income support, or stay on income support but no longer have requirements to take part in employment services.⁶ Volunteer job seekers must exit jobactive after six months of assistance.

Job seekers often exit the program when they have found employment. Survey data shows that almost two thirds of job seekers who exited jobactive are employed three months after exiting.

PROGRAM EXITS BY MONTH⁸

Around 450,000 job seekers exited the jobactive program during 2015-16.⁷ Program exits tend to be seasonal, with a dip in exits over the holiday period in January.

There is a big spike in exits early in the year, with many school and university leavers finding employment quickly in the New Year.



⁶ They may transfer to a different income support payment without participation requirements (such as Age Pension) or meet their participation requirements through other means (such as part time employment).

⁷ Includes job seekers who commenced during the same period of assistance under Job Services Australia who transitioned across to jobactive, but did not commence in the program.

⁸ Data as at 30 June 2016



Employment following jobactive assistance

The Department measures whether job seekers have moved into employment following assistance in jobactive through the PPM streams survey. The Department surveys a sample of job seekers three months after they have taken part in jobactive.

JOBACTIVE EMPLOYMENT RATES

Exited jobactive

- 62.5 per cent of job seekers who exited jobactive in 2015-16, were in employment three months after exiting.

62.5%

20.1%

17.4%

● Employed

● Unemployed

● Not in the Labour Force

Remained in jobactive

- Not all job seekers exit jobactive. Job seekers who were still in jobactive at the end of a month were surveyed three months later, throughout 2015-16. 38.2 per cent of job seekers who were still participating in jobactive in 2015-16, were in employment three months later.

38.2%

45.2%

16.6%

● Employed

● Unemployed

● Not in the Labour Force

Overall jobactive

- These populations are combined to produce an overall figure for job seekers who participated in jobactive in 2015-16. 48.1 per cent of job seekers who participated in jobactive between 1 July 2015 and 30 June 2016 were employed, three months later.

48.1%

35.0%

16.9%

● Employed

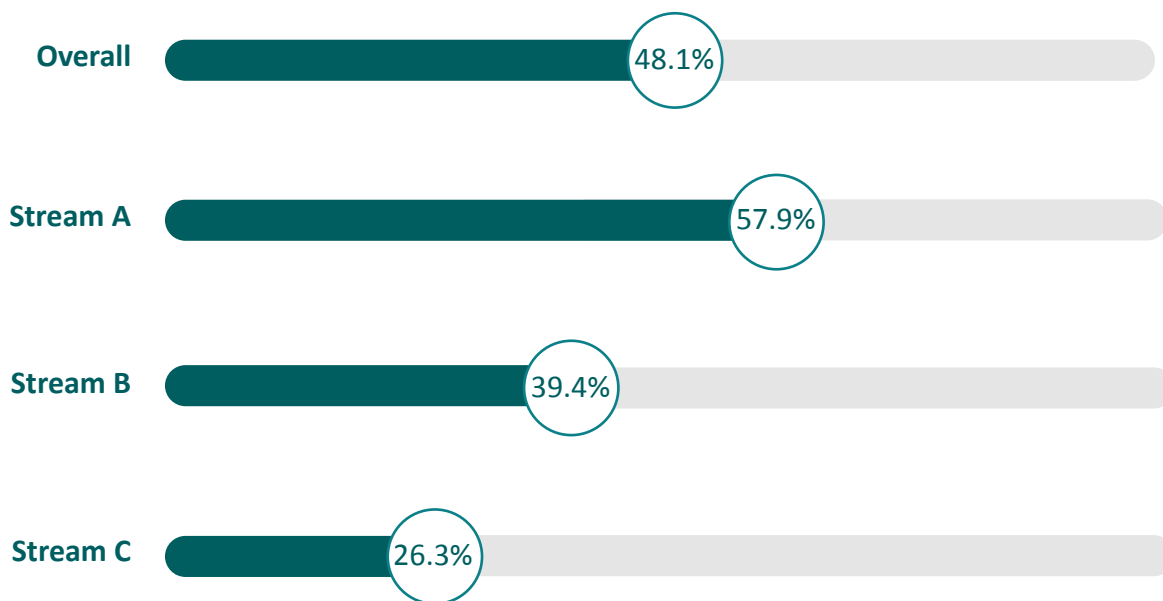
● Unemployed

● Not in the Labour Force

JOBACTIVE EMPLOYMENT RATES BY STREAM

Stream A job seekers tend to have a higher employment rate, as they are the most 'job ready', with more than half employed three months after participating in jobactive.

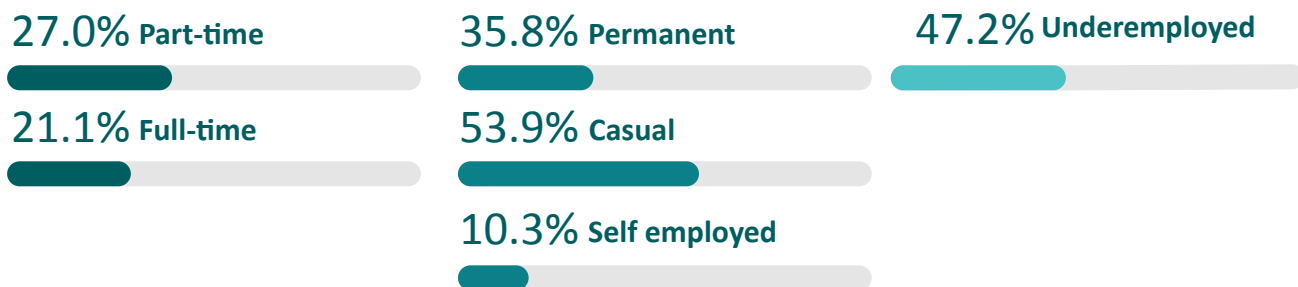
Stream C has a lower employment rate, with just over a quarter of job seekers employed three months after participation in jobactive.



EMPLOYMENT TYPE

Overall, jobactive job seekers who are in employment tend to be in part-time and casual jobs. This refers to job seekers who exited jobactive and who were still on the caseload.

- 27.0 per cent of job seekers are employed part-time and 21.1 per cent are employed full-time.
- 53.9 per cent of employed job seekers are in casual employment
- 47.2 per cent of employed job seekers would prefer to work more hours



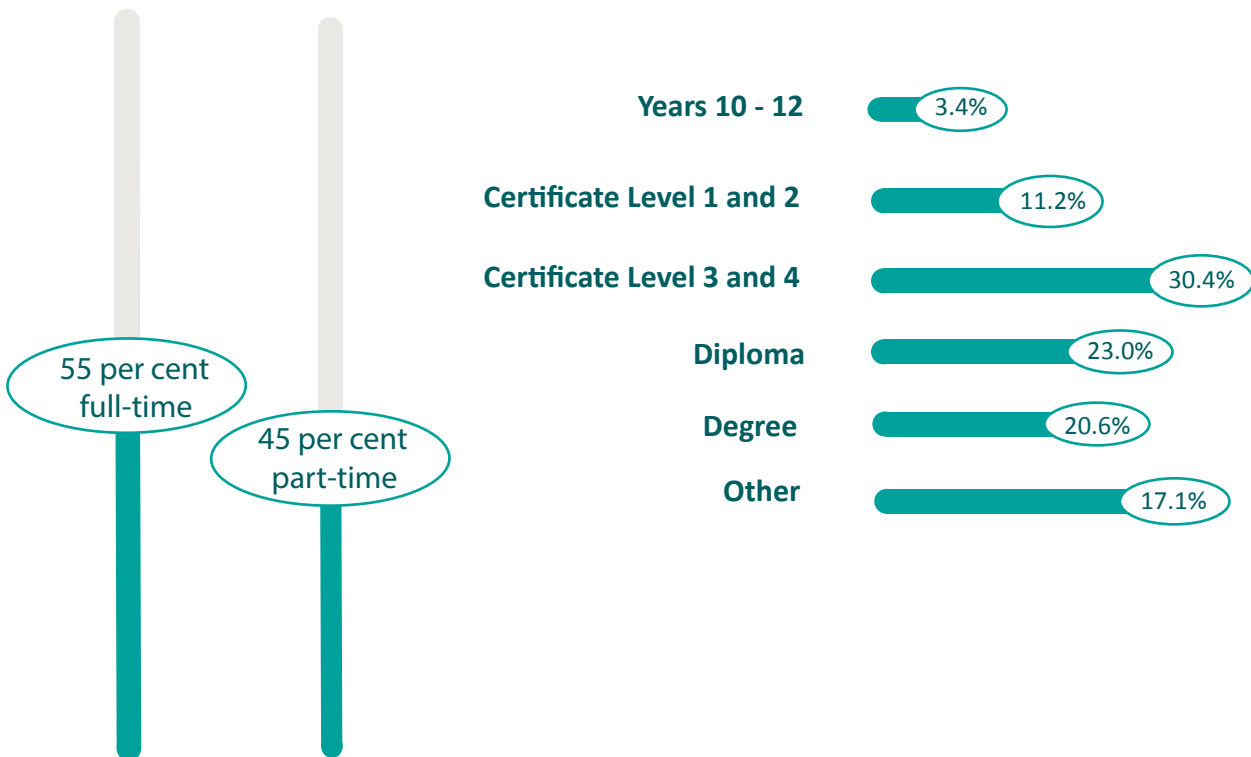
JOBACTIVE EDUCATION AND TRAINING

Many job seekers decide to participate in education or training to improve their employability. Almost one in five job seekers are undertaking one or more forms of study, three months after participating in jobactive.



STUDY TYPE

jobactive job seekers study full-time and part-time, and at the certificate or university level.



Outcome measures and definitions

Employment: A job seeker is considered employed if they indicate that they work one or more hours, on average, per week. The employment rate is the proportion of total job seekers who are employed.

Unemployed: Job seekers are considered unemployed when they respond that they are not employed but are seeking work. The unemployment rate is unemployed job seekers as a proportion of all job seekers.

Not in the Labour Force (NILF): Job seekers are considered Not In the Labour Force (NILF) when they indicate that they are not working and are not looking for work. The NILF rate is NILF job seekers as a proportion of all job seekers.

Job placement: A job placement occurs when a job seeker finds a job, either on their own or with assistance from their provider. This job is referred to as a 'job placement'.

Provider: a jobactive provider is an organisation contracted through the Department of Employment to provide employment services to local employers and job seekers, including helping job seekers to find and keep a job and employers to meet their recruitment needs.

Paid outcome: A paid outcome is when a provider receives a payment from the Department of Employment for helping a job seeker into a job, where the job seeker stays in the job for a certain period of time and reduces their reliance on income support payments.

Employed full-time: Job seekers are considered to be in full-time employment when they work 35 or more hours per week. The full-time employment rate refers to full-time employed job seekers as a proportion of all job seekers.

Employed part-time: A job seeker is considered to be in part-time employment when they work less than 35 hours per week. The part-time employment rate refers to part-time employed job seekers as a proportion of all job seekers.

Underemployment: The underemployment rate refers to employed job seekers who would like to work more hours, as a proportion of all employed job seekers (this includes both employees and self-employed job seekers).

Streams Labour Force survey: This survey asks selected job seekers about their employment and education status, whether they are looking for work, and whether their jobactive provider assisted them in finding a job, three months after participation in jobactive. A sample of job seekers are selected if they have exited jobactive, or are on the jobactive caseload at the end of a month, and are surveyed three months later.

Streams Skills and Satisfaction survey: Selected job seekers are asked whether they received services from their provider, and about their level of satisfaction with service provision. A sample of job seekers are selected if they have exited jobactive, or are on the jobactive caseload at the end of a month, and are surveyed three months later.

Job Placement survey: This survey draws on a sample of job seekers who have recorded a job placement, three months after commencing in their job placement, questions about their current employment and education status and whether they are looking for work.

Activities Labour Force Status Survey: This survey asks a sample of job seekers who have participated in an approved activity (e.g. Work for the Dole) about their employment and education status, whether they are looking for work, and whether they have used the skills gained from participation in an activity in finding a job. The survey is conducted three months after a job seeker has exited an approved activity.

Activities Skills and Satisfaction survey: This survey asks a sample of job seekers who have participated in an approved activity about their level of satisfaction with the activity, and about improvements in their soft skills as a result of participating in the activity. The survey is conducted six weeks after a job seeker starts an approved activity.

Further information and data on results from the PPM surveys are available at:

<http://employment.gov.au/labour-market-assistance-outcomes-reports>

Information on the populations for the surveys described in this report are also available, along with further technical information.